

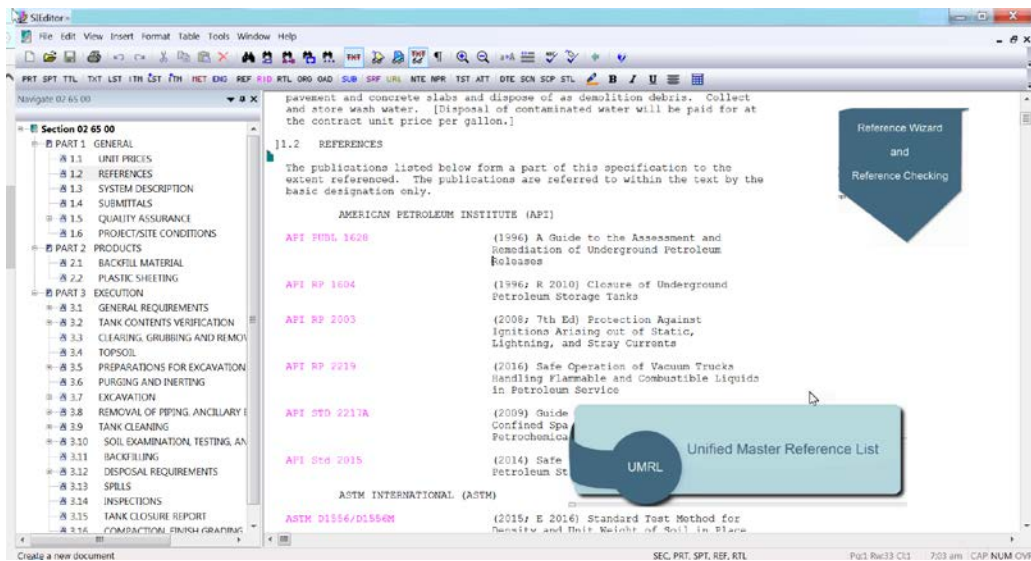
SpecsIntact eLearning Modules Transcript

Module: Chapter 3 – Adding References from The Unified Master Reference List (UMRL)

We highly recommend that you view the corresponding eLearning Module visual representation of the subject matter.

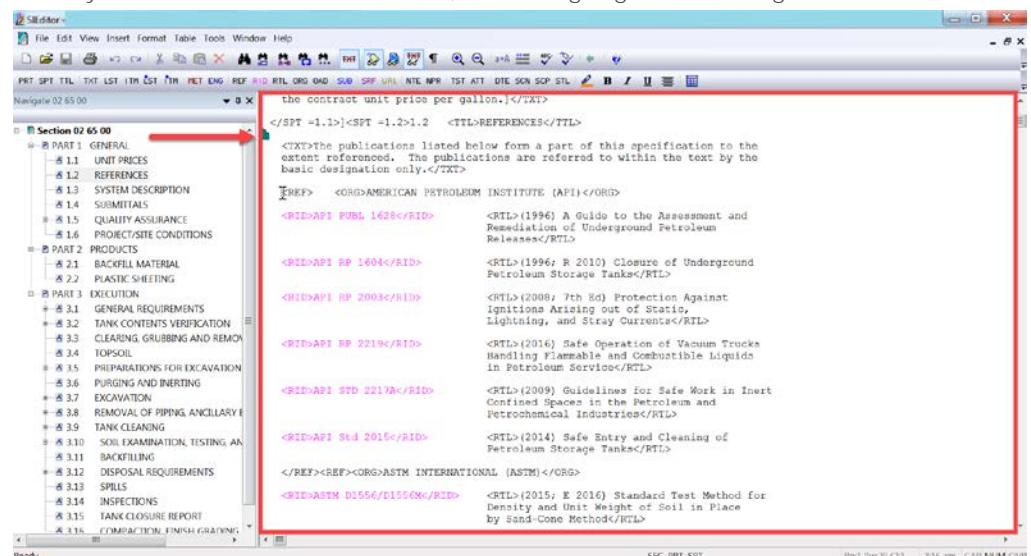
00:00:10,666 --> 00:00:40,166

The Unified Master Reference List (UMRL) is a list of all the reference standards cited in the Unified Facilities Guide Specifications (UFGS) Master. The UMRL is the primary Reference List used by the Editor's Reference Wizard and Reference Checking tools. I encourage you to watch all the modules pertaining to References in this Chapter so you have a complete understanding of References, their format and functionality.

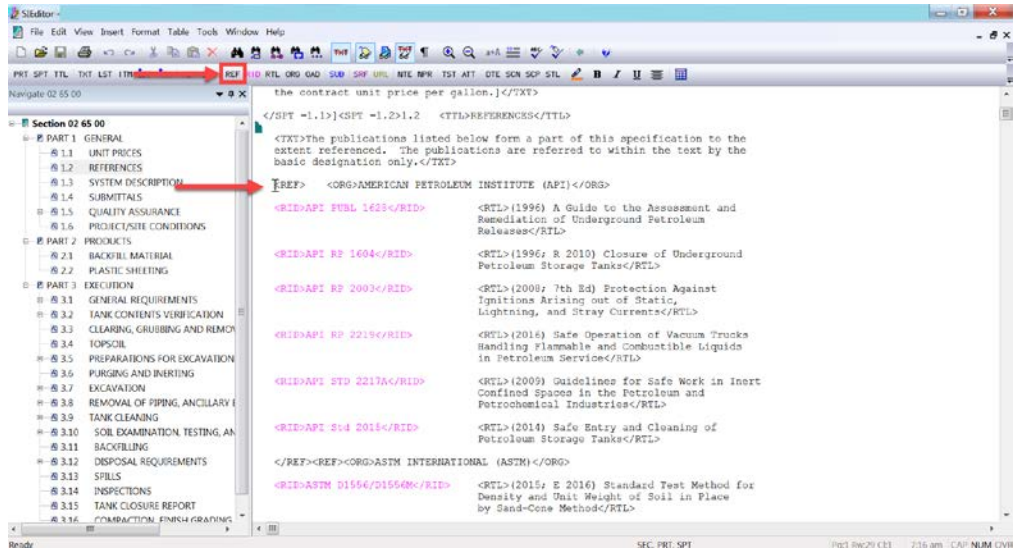


00:00:40,166 --> 00:02:04,833

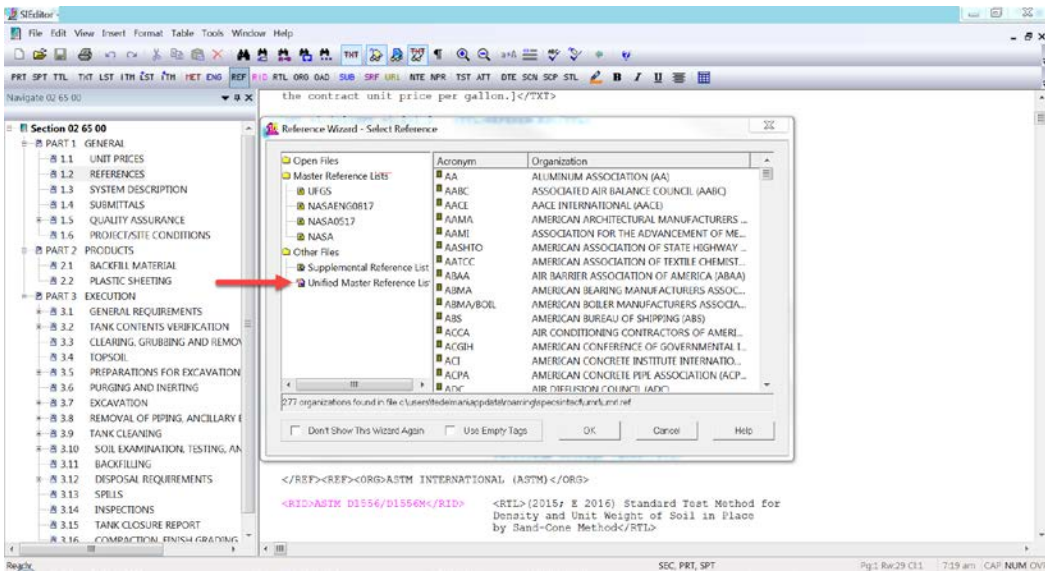
You will notice that I already have the Reference Article visible, so we are going to start adding References to our Section.



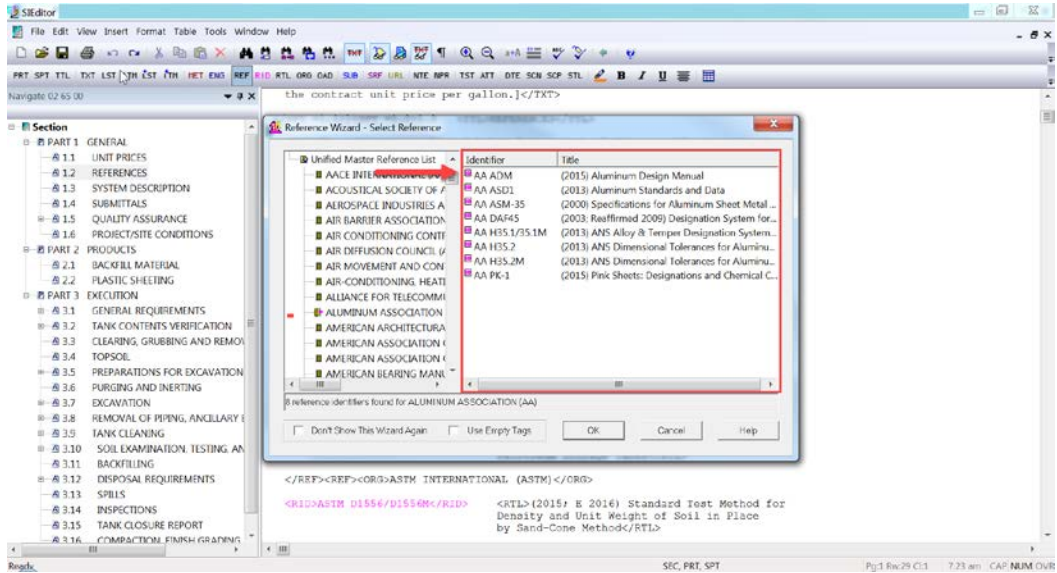
The first Reference we are going to add is the ALUMINUM ASSOCIATION (AA) along with the AA ADM Reference Publication. We want the new Reference Organization to fall in the correct location alphabetically, so let's *place our cursor* in front of the beginning **<REF>** tag just before AMERICAN PETROLEUM INSTITUTE (API). Now we are going to *select the REF button* on the SI Editor's Tagsbar, to launch the Reference Wizard.



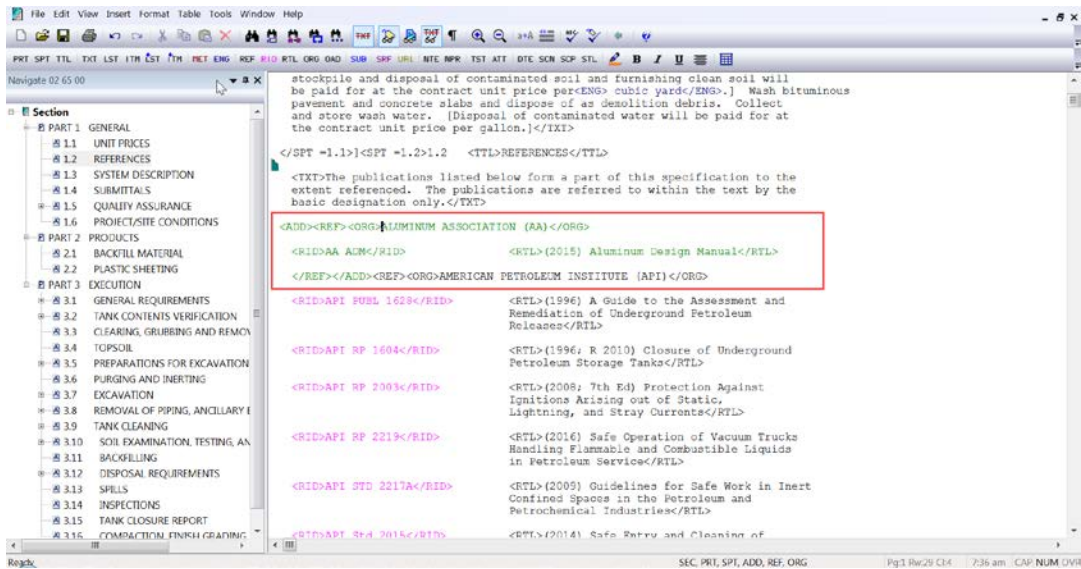
The Reference Wizard window can be resized to allow more data to be displayed and the settings will be saved once you've made a selection. By default, the Reference Wizard will pre-select the Unified Master Reference List (UMRL) and display the contents on the right pane of the window.



Let's start by *double-clicking* on **AA** in order display the available Reference Identifiers and Titles associated to the ALUMINUM ASSOCIATION (AA) Organization. We are adding AA ADM, so let's *double-click* on the **Reference**.

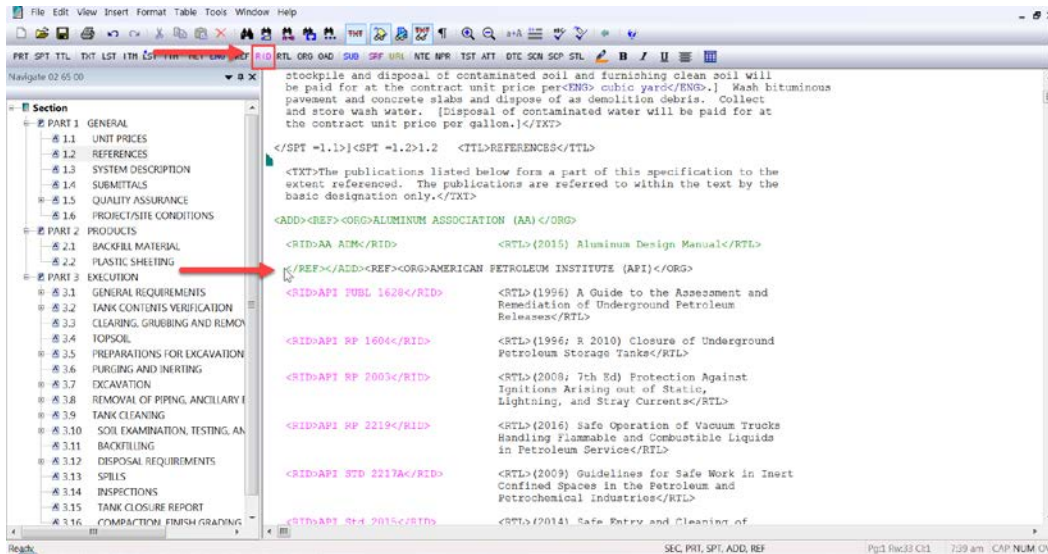


As you see, the Reference Organization and Reference Publication was added to our Reference Article. That was pretty easy, so let's add some more!

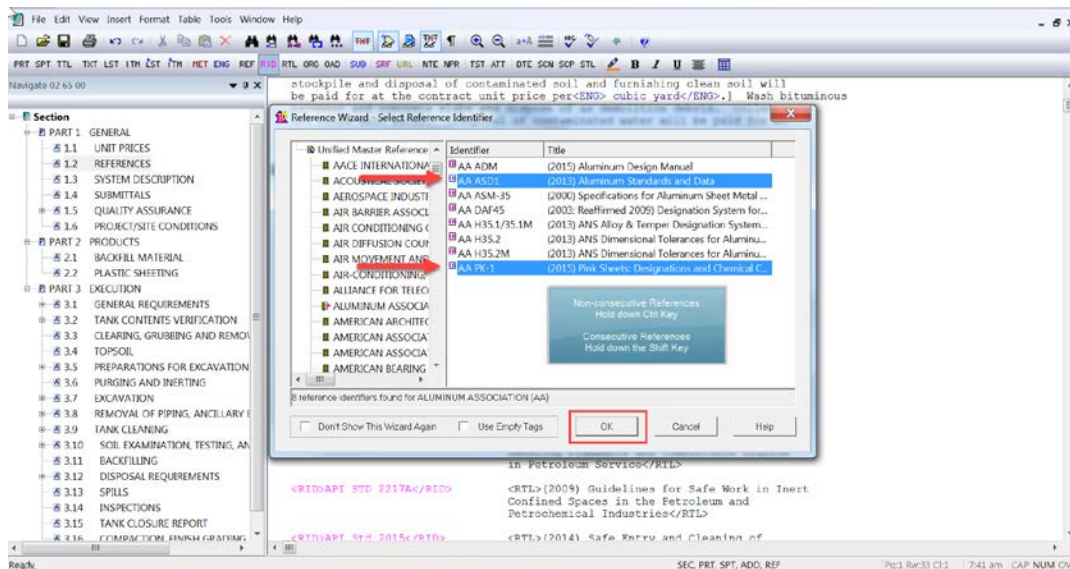


00:02:04,833 --> 00:02:50,433

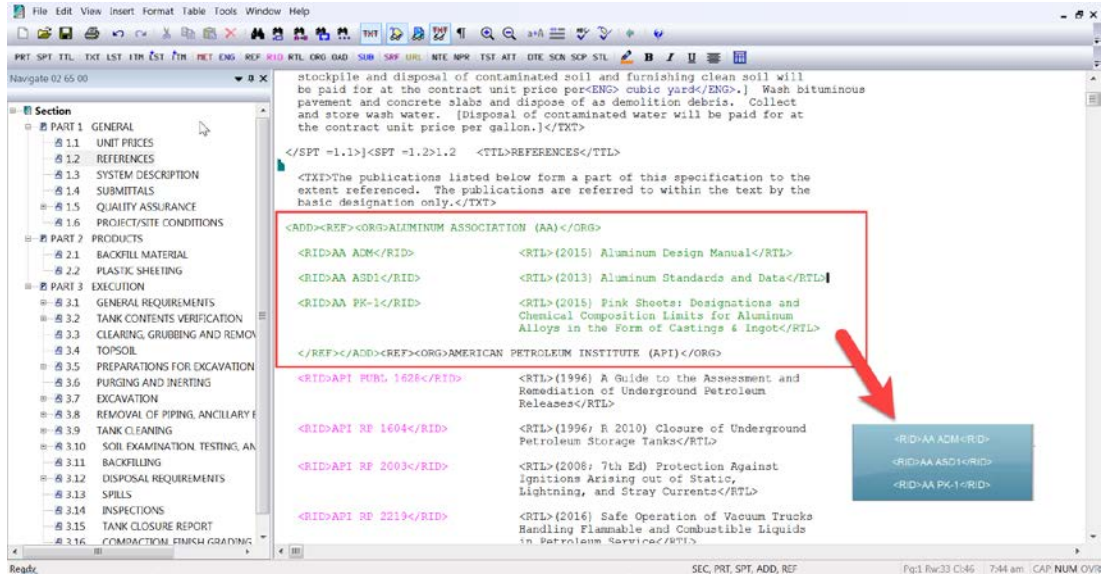
This time, we are going to add additional Reference Publications to ALUMINUM ASSOCIATION (AA). To do this, Place your cursor to the left of the ending `</REF>` tag located on the same line as the AMERICAN PETROLEUM INSTITUTE (API) Organization. With your cursor in the correct location, select the `<RID>` button on the Tagsbar,



when the Reference Wizard opens, select **AA ASD1**, now hold down the **Ctrl** key and select **AA PK-1**. If you were going to add consecutive references, you would hold down the **Shift** key. Now let's select the **OK** button.



As I have discussed in the other Reference related modules, you will need to add the Reference Identifier surrounded by the <RID> tags to body of the Section, outside of the Reference Article! If the Reference Identifier has not been added outside of the Reference Article, the Reference Identifier and/or the Reference Organization will be removed when the Section is processed.



To continue learning, proceed to the next module of your choice.

Contact Information

If you need further assistance, please contact our Technical Support Desk. We will be happy to answer any questions you may have.

SpecsIntact Technical Support

Monday - Friday

8:00 AM – 4:30 PM Eastern Time

Phone: 321.867.8800

Email: KSC-SpecsIntact@nasa.gov

eLearning Module Notes:
