

SpecsIntact

Learning Guide Series



Installation Guide



INSIDE

1 Installation Basics

- ◆ Where Do I Get SpecsIntact
- ◆ Other Software Components
- ◆ System Requirements
- ◆ SpecsIntact Terms
- ◆ SpecsIntact Structure

2 Installations

- ◆ Type of Installations

3 Downloading SpecsIntact

- ◆ Downloading
- ◆ Check SpecsIntact Version

4 Traditional Local Installation

- ◆ Local Installation Process

5 Windows Installer MSI Installation

- ◆ IT Administrators Only

6 Using SpecsIntact Lite

- ◆ What is SpecsIntact Lite
- ◆ How do I get the SpecsIntact Lite
- ◆ What I need to know about the configuration
- ◆ SpecsIntact Lite Setup

7 Working Directories and Connecting Masters

- ◆ Setup Working Directories
- ◆ Connect Masters
- ◆ Counting Users

8 Installation Tips

- ◆ System Files
- ◆ Updating the software
- ◆ Updating the UFGS Master
- ◆ Updating the UML and UMSL
- ◆ Manual SpecsIntact PDF Printer Setup
- ◆ Shortcut Management

SpecsIntact

Installation Guide

ABOUT THIS GUIDE

The SI Learning Guide Series is designed to teach SpecsIntact users the concepts involved in successfully installing the SpecsIntact software to completing projects by fully utilizing all the tools provided in the SpecsIntact system. Each guide addresses a particular aspect of the system, and clearly outlines the major points a reader should understand at the completion of each chapter.

This guide provides an introduction with the fundamental concepts of the different installation types and processes. This guide grew from a need to help new users get started while providing in-depth knowledge in order to choose the best installation for your organization.

You are encouraged to use this guide in conjunction with the other guides and user tools we provide on the website's Support and Help Center page, like the eLearning Modules, Web-Based Help, and Knowledge Base along with other resources, which are all conveniently accessible from the SpecsIntact Explorer's Help menu.

Edition: 07.13.2023

USACE CEHNC

Introduction

How to Use This Guide

We want learning SpecsIntact to be as painless as possible, so we've designed these guides to give you enough information to get you going successfully without overwhelming you with every possible detail.

Along the way, we'll point out key information that you should remember, and call your attention to things that you should avoid. At the beginning of each chapter, we'll outline what you need to learn from it, and at the end, we'll summarize the concepts you should have mastered.



MEET SARINA

Sarina will help guide you through the process of Learning SpecsIntact. She'll point out the pitfalls as she prepares you to configure your software!

Throughout the guide, we'll call your attention to important issues using the symbols, below along with a brief explanation of what they mean.

-  Helpful Hint - - Might make your work easier.
-  Frequently Asked Question - - just that.
-  Note - - Important point, so pay attention.
-  Caution - - The condition or action may cause problems proceed at your own risk.
-  Stop - - Means stop don't do it or you may regret it later!



In this chapter you'll learn:

- ◆ What you learned about point one.
- ◆ What you learned about point two.
- ◆ What you learned about point three.
- ◆ What you learned about point four.

At the beginning and end of each chapter, Zoe will outline the important points that the chapter covers. Before moving on to the next chapter, be sure you have an understanding of those points, since the subsequent chapters will build on that knowledge.



What you learned from this chapter:

- ◆ What you learned about point one.
- ◆ What you learned about point two.
- ◆ What you learned about point three.
- ◆ What you learned about point four.

Instructions that should be followed in sequence are numbered.

1. First you do this
2. Then you do this
3. Last, but not least, you do this

Text in **bold** indicates elements you will find on your screen or SpecsIntact Terms: **File** menu, **OK** button, **Section**

Lists of important points are bulleted.

Points to Remember:

- Something
- Another thing
- Yet another thing



When you see a mouse symbol, it means you can also right-click to access the function.

S_{upport} P_{roblems} E_{ncountered} C_{ommonly}

Here's where you'll find some real-life examples from our Tech Support Desk. Learning from others' mistakes is better than making your own! The situations are real, the names are not.



Overview

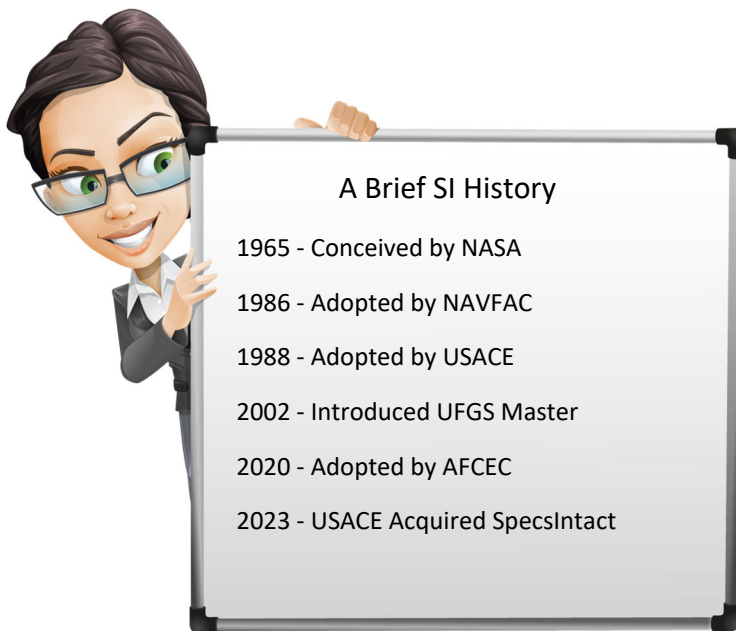
What Is SpecsIntact?

SpecsIntact is an automated project management system for processing standard Masters used in facility construction and provides built-in quality assurance reports and automated functions that lets you adapt standardized facility construction specifications to fit your project.

Used worldwide by the U. S. Army Corps of Engineers (USACE), the U.S. Naval Facilities Engineering Command (NAVFAC), and the Air Force Civil Engineer Command (AFCEC). SpecsIntact makes it possible to assure quality control for project specifications from beginning to end.

The SpecsIntact system -- managed by USACE at the Huntsville District -- is used by engineers, architects, specification writers, project managers and construction managers doing business with the three supported DoD agencies.

Using SpecsIntact reduces the time and expense required to produce facility specifications, and helps eliminate costly construction changes due to omissions, discrepancies or improper quality controls.



So Let's Get Going With SpecsIntact!

Chapter 1

Installation Basics



In this chapter you will learn:

- ◆ Where do I get SpecsIntact.
- ◆ Other Software Components
- ◆ System Requirements
- ◆ SpecsIntact Terms
- ◆ SpecsIntact Structure

Where Do I Get SpecsIntact?

At any time the most recent version of the SpecsIntact software can be downloaded from the SpecsIntact Website at:

<https://specsintact.wbdg.org/software/download>

USACE personnel must request SpecsIntact from the USACE App Portal.

Other DoD personnel should contact their respective IT Service Provider to request SpecsIntact.

Other Software Components

During the installation process, the software will give you the choice to download and install the latest Unified Facilities Guide Specifications (UFGS) Master. The UFGS Master is maintained by each of the agencies for use by NASA, and Military Departments such as Army, Navy and Air Force, etc., the Defense Agencies and the DoD Field Activities for planning, design, construction, sustainment, restoration and modernization of facilities.

System Requirements

We suggest you refer to the Microsoft Windows system requirements for your Operating System..



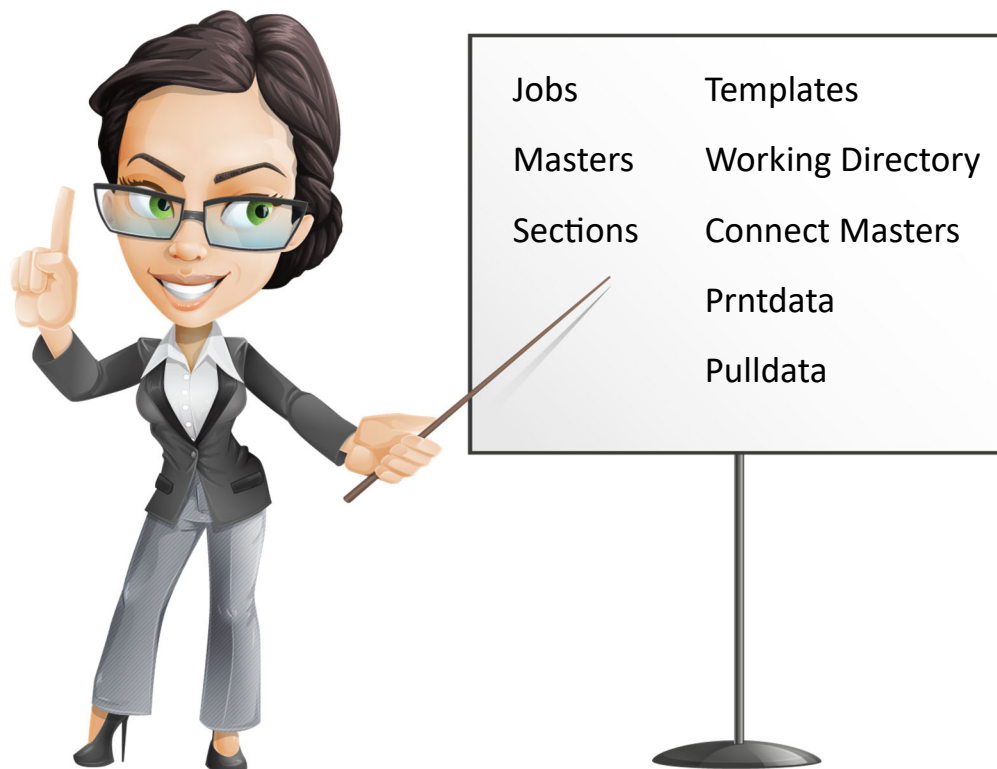
SpecsIntact requires at least one system printer. This can be the SpecsIntact PDF printer, available as an option when installing SpecsIntact or Adobe PDF.

SpecsIntact Terms

If you are new to SpecsIntact, you may find some terms unfamiliar . Learning what they mean will help you understand how the system works and how to communicate more effectively regarding your setup.

Some terms you'll encounter are unique to SpecsIntact, others are industry related and may already be familiar to you, while still others are computer related. Since SpecsIntact users come from a variety of backgrounds, we'll define terms for you as we go along.

You'll also discover that some common words have a very specific meaning in SpecsIntact. To help you avoid confusion, we'll point out SpecsIntact terms.



There are terms you will become familiar with when viewing the SpecsIntact structure from Windows Explorer or File Explorer. As you continue through this Guide you will get to know them as you would see them through the SI Explorer.

SpecsIntact Structure

Here are some definitions of SpecsIntact.

- ◆ **Jobs** -- A consolidation of guide specifications extracted from a Master is called a Job or Project.
 - ◆ **Pulldata** -- This is where the Jobs working files are stored. You can right-click on the Job to Open in Windows or File Explorer.
 - ◆ **Prntdata** -- This is where the Jobs processed files are located. These files are temporary files that are deleted each time the Job is processed.
- ◆ **Masters** -- Are groups of standard Agency Guide Specifications used in the preparation of a Job.
- ◆ **Sections** -- Guide Specifications that cover specific aspects of construction.
- ◆ **Working Directories** -- Is where the Jobs, Masters , Templates and Exported files are stored.
- ◆ **Templates** -- There are two types of templates SpecsIntact uses:
 - ◆ **WSection** -- Is a text outline used to assist the user by providing examples of how text should be entered in SpecsIntact for a new Guide Specifications.
 - ◆ **WFormat** -- Are user created outlines used to create cover pages, sign-off page, project information pages, etc.



Learning how to speak SpecsIntact makes it easier to fully utilize all of its features!

Page Intentionally Left Blank

Chapter 2

Types of Installations



In this chapter you will learn:

- ◆ Types of Installations
- ◆ Local Executable
- ◆ Windows Installer MSI

It is important to understand the different types of installations in order to make the best decision for you and your organization!



Both installations are local installations but very distinctively different!

Local Executable

The local installation (.exe) is an attended installation that places the software on your local computer and is user-specific. This installation supports installing the same or newer versions over existing installations as well as side-by-side installations of different SpecsIntact versions. We'll cover more about this installation type in Chapter 4.

This is by far the most popular installation!

Windows Installer MSI

The Windows Installer MSI installation is intended primarily for **IT Administrators!**

The MSI installation (.msi) is designed to integrate with third-party software deployment tools for performing silent or pre-configured installations to multiple systems across a network, thus eliminating the need for the system administrator having to visit each system to perform an installation. This is a convenient way to streamline the installation process of a desktop application and discussed more in Chapter 5.

Types of Installation

SpecsIntact Lite

The SpecsIntact Lite (SILite.zip) version is designed for users with restricted permissions that prevents typical installations such as the executable and MSI versions. SpecsIntact Lite will run independently while allowing you to take advantage of the latest features. You'll learn more about SpecsIntact Lite in Chapter 6.

Version Comparison

Feature	Local Executable	MSI
Installed On Local Drive	✓	✓
End-User or Assisted Interface	✓	
Automated Remote/Silent Installation Capable		✓
Side-By-Side Installation With Other Versions	✓	
Overlaid Software Updates	✓	

RULES

- ◆ **Avoid mixing the MSI and Local installations** on the same computer. If you wish to switch from the MSI to the Local Installation or vice versa, uninstall the current version first, and then reinstall the alternative version.

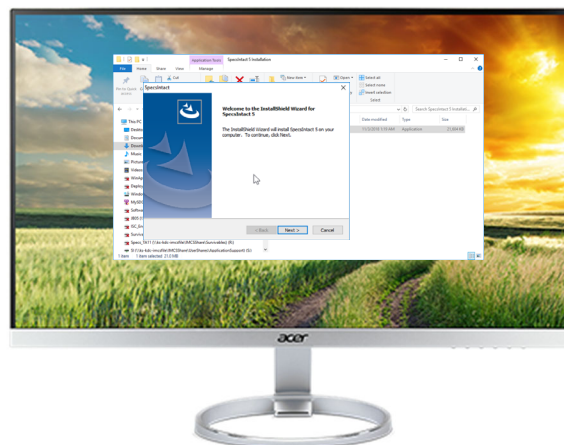


Types of Installation



In subsequent chapters, we will learn how to perform each of the installations we have learned about in this chapter.

Since both installation packages are installed on the local system, the Working Directories which contain the Jobs and Masters can be placed on a network server. Placing the Working Directory on the network also has added benefits since the network is typically backed-up on a daily basis whereas local hard drives are not.



What you learned from this chapter:

- ◆ The Traditional Local Installation is an end-user or attended installation
- ◆ IT Administrator's prefer the Windows Installer MSI installation for performing silent pre-configured installations
- ◆ The MSI Installation integrates with third-party software deployment tools
- ◆ The Local installation is still the most convenient and preferred installation for most users
- ◆ Regardless of the installation, Jobs and Masters can be housed on the Network Drive

Page Intentionally Left Blank

Chapter 3

Downloading SpecsIntact



In this chapter you will learn:

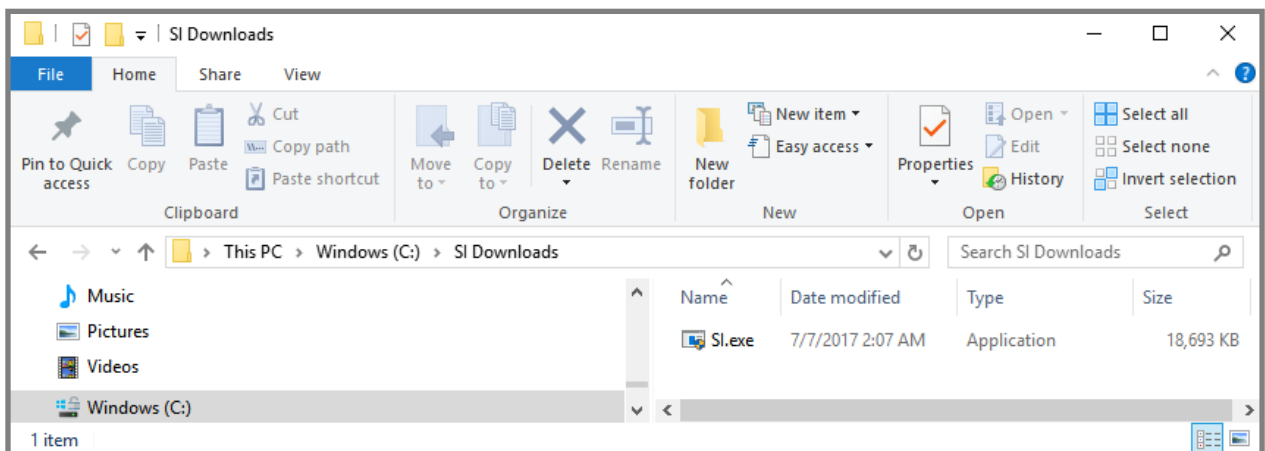
- ◆ Downloading SpecsIntact
- ◆ Checking SpecsIntact Version Before Installation

In Chapter 2, we learned about the different types of installations that SpecsIntact has to offer. By this time, you should know which one is best for you! This chapter will guide you through downloading the software and the local installation.

First you will need to download SpecsIntact from our website. Before you begin, choose a location where you would like to download the software.

 <https://specsintact.wbdg.org/software/download>

When downloading the software, make sure to save it to a unique folder such as C:\SI Downloads. This will ensure the SpecsIntact installation runs properly and will avoid receiving false erroneous messages.



Downloading SpecsIntact



Before I install, how do I know I have the right version?

That is a good question! So many times the SI.exe file has been downloaded into multiple locations. When you are in Windows File Explorer and **mouseover the installation (SI.exe) file**, a pop-up window appears to display the file information and version. This is another reason you should keep a designated download folder on your system to avoid having multiple versions.



File description: InstallScript Setup Launcher Unicode
Company: SpecsIntact
File version: 5.4.0
Date created: 8/11/2022 12:33 PM
Size: 27.2 MB



Obtaining the version number for SpecsIntact's MSI Installation isn't quite so easy! Your system administrator should have a third-party MSI reader tool they can use when needed since the MSI installation is typically regulated by the system administrator to push SpecsIntact onto multiple system simultaneously.

Chapter 4

Local Installation



In this chapter you will learn:

- ◆ How to do a Local Installation
- ◆ Windows 7 and Windows 10 Default destination folder

In Chapter 2, we learned about the different types of installations that SpecsIntact has to offer. By this time, you should know which one is best for you! This chapter will guide you through installing SpecsIntact on the local computer, but you can also refer to the **eLearning Module** below Chapter 1 located on the SpecsIntact Website.

START

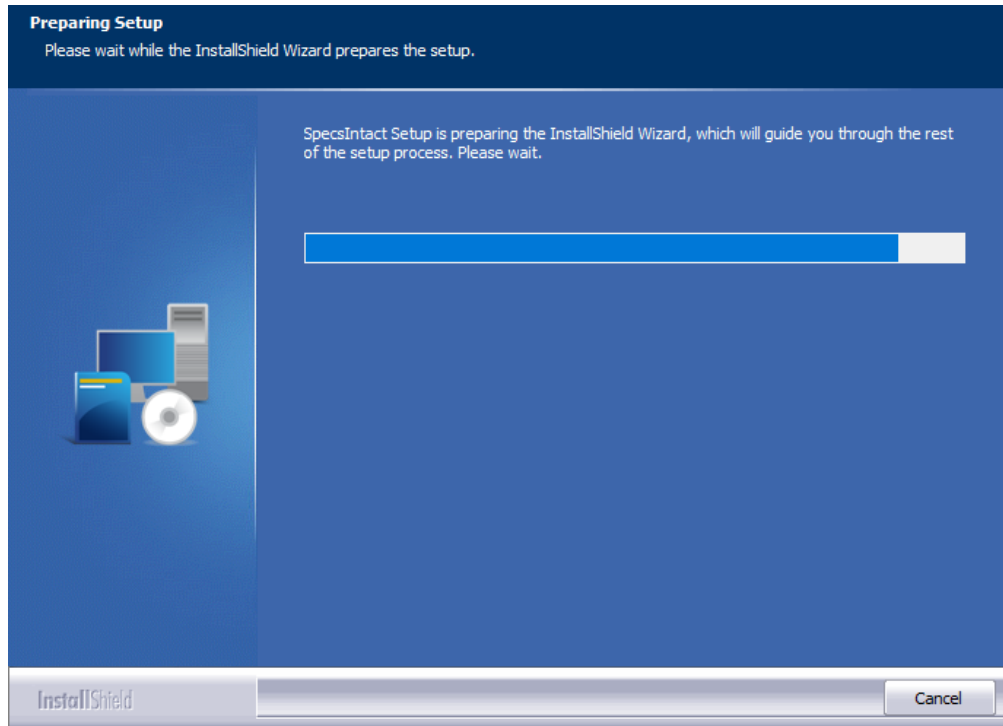


To begin the **Local Installation** open **Windows File Explorer** or **File Explorer** in order to locate the **SI.exe** or **Si.msi** file previously downloaded. Once located, double-click to begin the installation process.

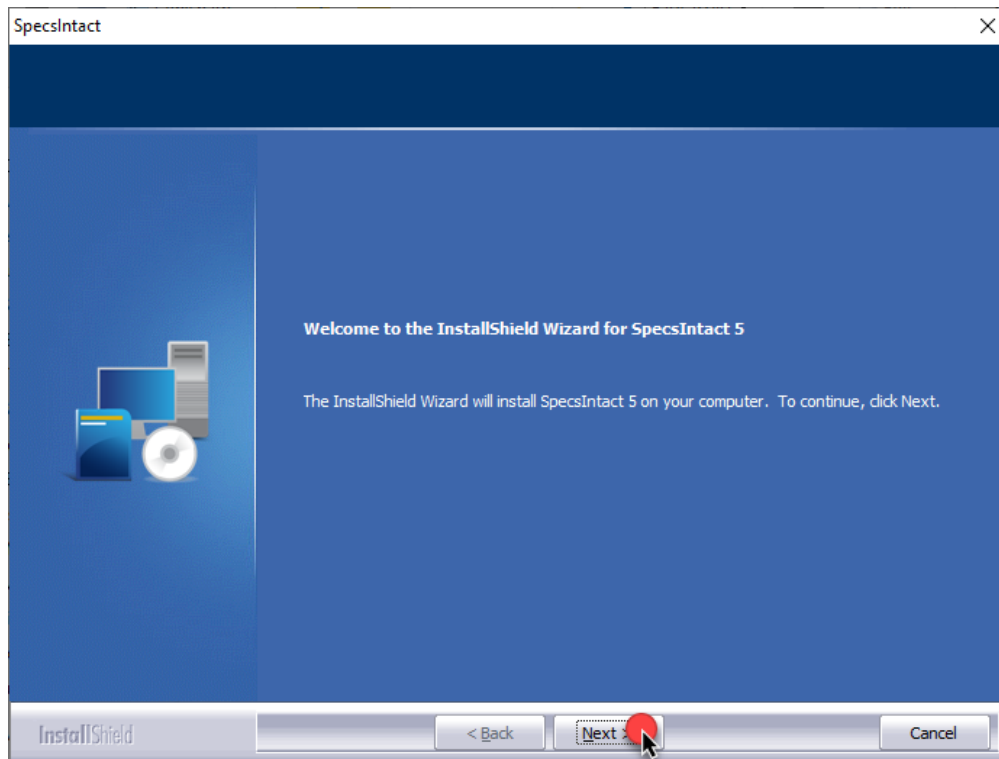


Local Installation

START

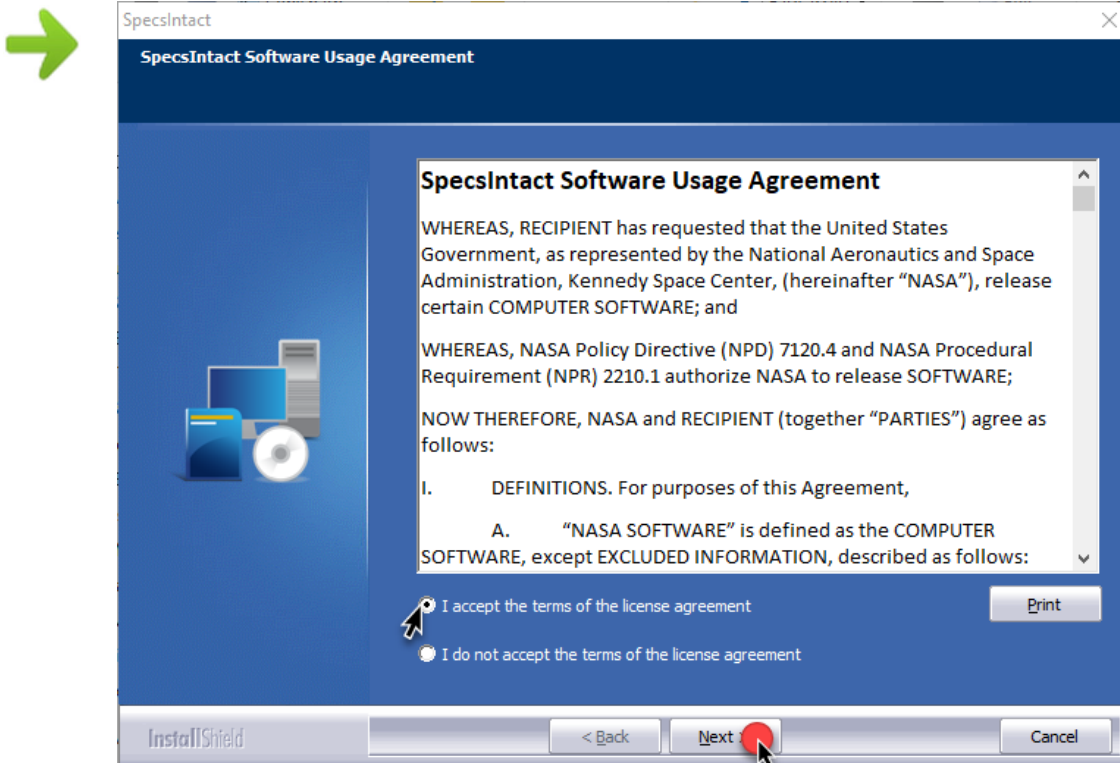


Preparing For Setup



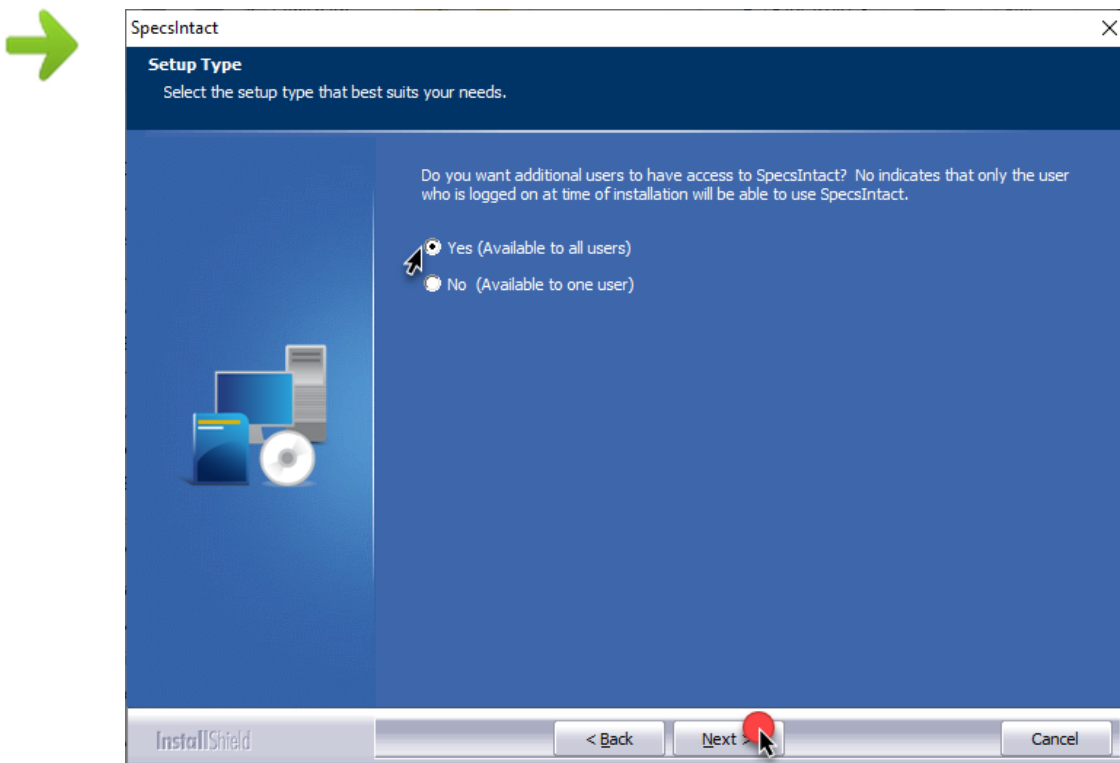
Click Next

Local Installation



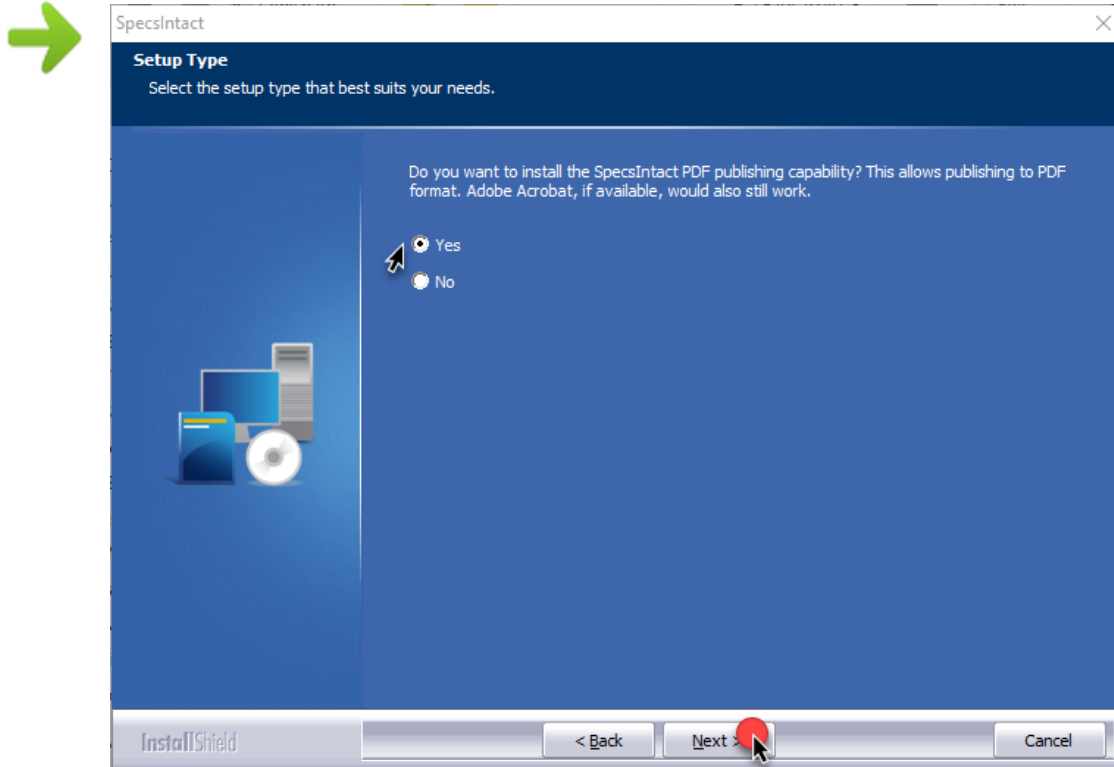
Click I accept the terms. Of the license agreement

Click Next

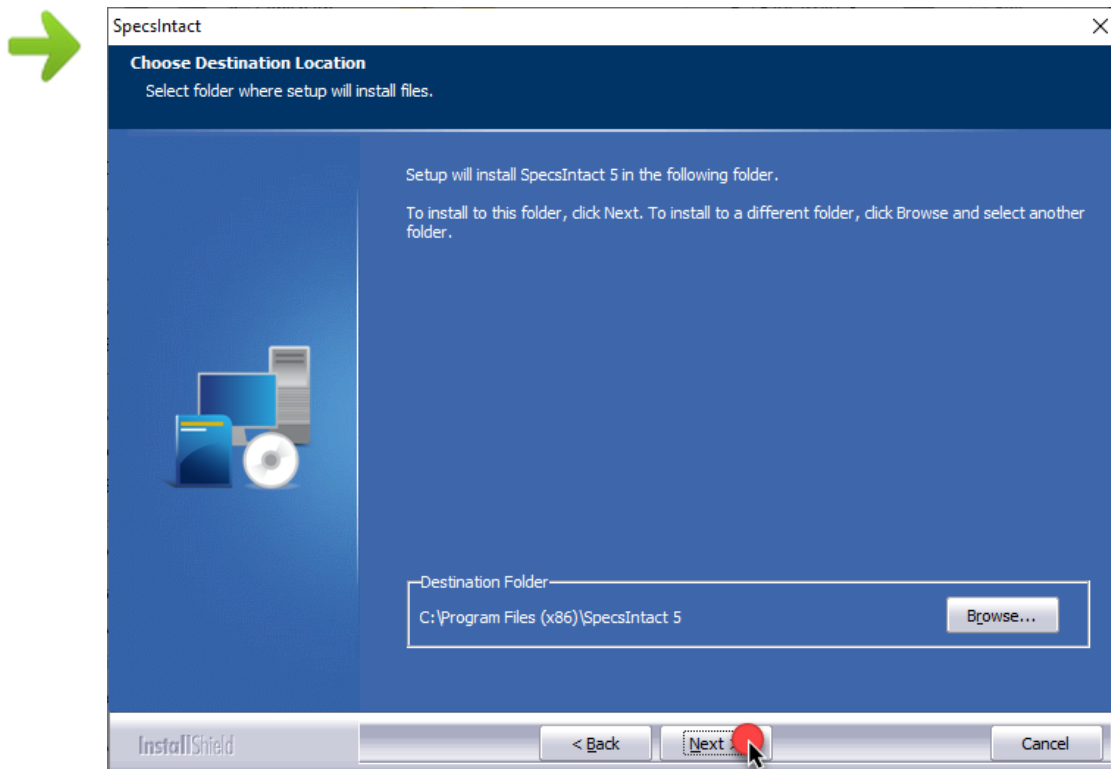


The default option **Yes** is recommended. Click Next

Local Installation



The default **Yes** is recommended. *Click Next*



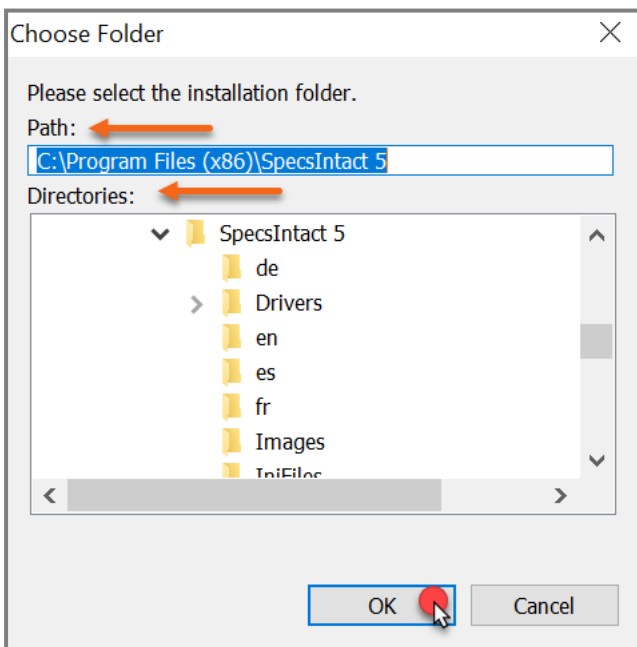
Click Next

Local Installation

Windows 10 and 11

The default destination folder for 32-bit applications is C:\Program Files (x86)

Skip the next two steps if you are using the Default Destination



Type the **Path** or *Browse* to change the **destination** folder then *click* **OK**

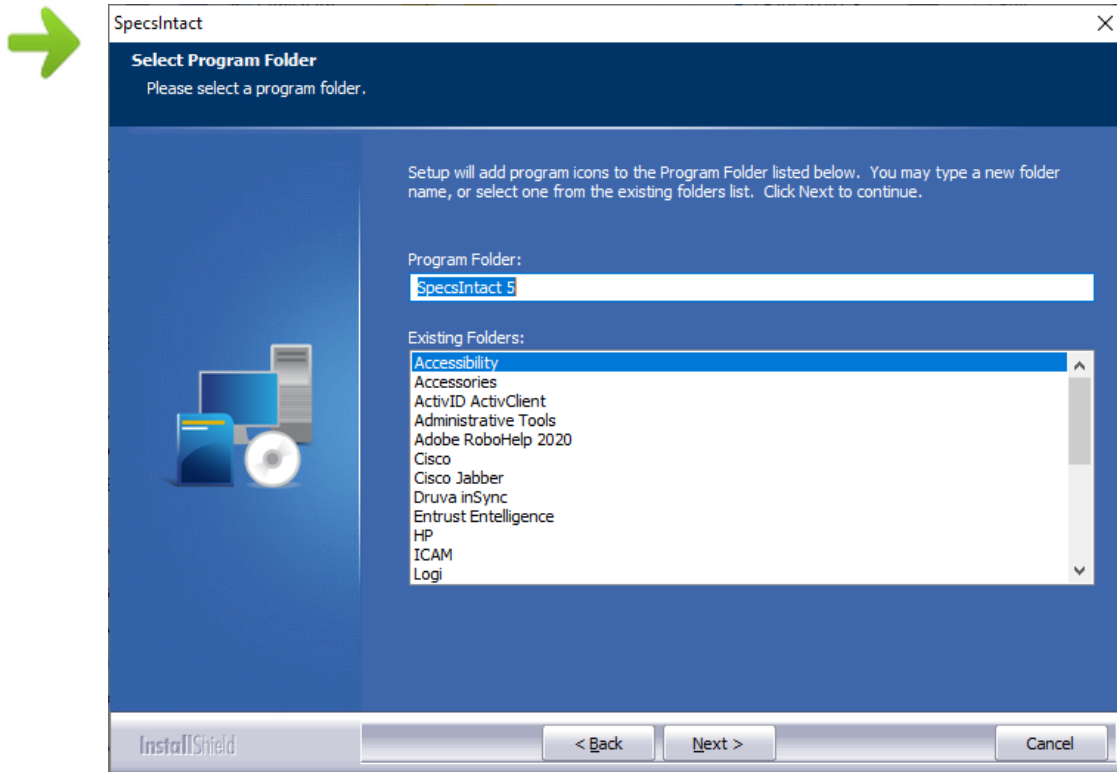
When choosing the destination folder for Local Installation, the path can be typed directly into the box

- Or -

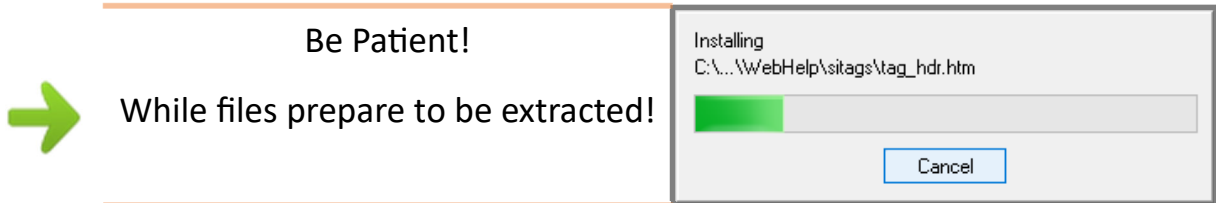
You can use the directory structure and browse to the desired destination.



Local Installation



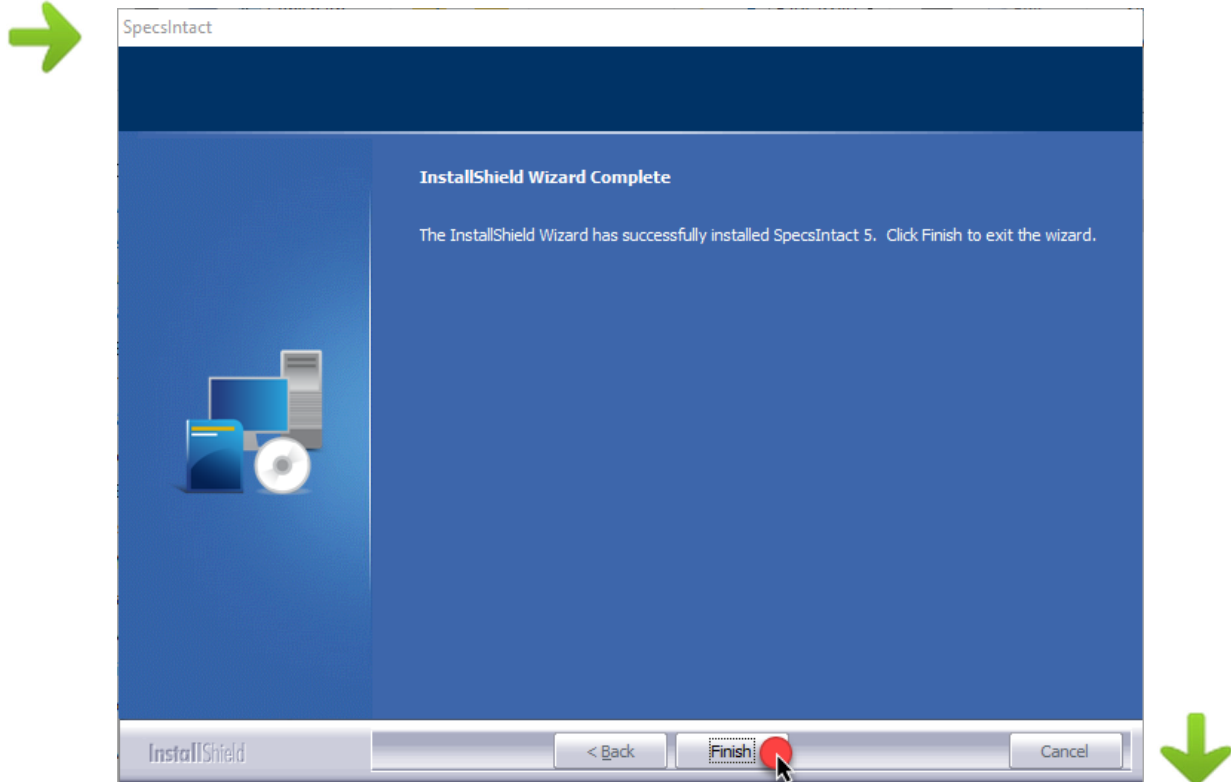
Click Next



Files begin to copy to the Local Drive (destination folder)



Local Installation



Now you are ready to proceed to Chapter 7 to finish the setup by establishing the Working Directories and Connecting your Masters!



Page Intentionally Left Blank

Chapter 5

MSI Installation - IT Administrators



In this chapter you will learn:

- ◆ About MSI Installations
- ◆ How and when to do an MSI Installation
- ◆ Remote Management Software
- ◆ Resources

In Chapter 2, we learned about the different types of installations that SpecsIntact has to offer. This chapter will provide additional information regarding the MSI Installation.

The MSI Installation provides better integration with third-party software deployment tools used to create silent or pre-configured installations. A third-party Software Deployment Tool such as Microsoft's "Windows Installer Service" will define the parameters that instruct the installer how to run (i.e. where to install the program, if a shortcut is placed on the desktop, etc.). It is very important that IT Administrators have the expertise that is required to use these tools, in order to integrate with SpecsIntact's MSI Installation package!

Silent installations require no user interaction and it is a convenient way to streamline the installation process of a desktop application on several systems at once.

If this installation is not what you expected, then refer to Chapter 4, to guide you through the Traditional Local Installation process.



If you need assistance creating silent or pre-configured installation packages, please seek assistance from your third-party software deployment tools support team.

Once the installation is pushed and the end-user opens SpecsIntact for the first time, they will be prompted to Connect their Masters and setup their Working Directories.

Refer to Chapter 4 for detailed installation instructions and then proceed to Chapter 7 to finish the setup for Working Directories and Connected Masters



Chapter 6

SpecsIntact Lite



In this chapter you will learn:

- ◆ What is SpecsIntact Lite
- ◆ How do I get the Lite version
- ◆ What I need to know about the configuration
- ◆ SpecsIntact Lite Setup
- ◆ SpecsIntact PDF

The SpecsIntact Lite software is available for users who have restricted permissions preventing them from installing or updating the regular version of SpecsIntact, so you can enjoy the latest features. When setting up the SpecsIntact Lite version, the software will be placed either in your systems Documents folder or directly on the hard drive, which we'll discuss later in this chapter. You can also refer to the **eLearning Module** below Chapter 1 located on the SpecsIntact Website for a video tutorial of this process.

Where Do I Get SpecsIntact Lite?

At any time the most recent version of SpecsIntact software can be downloaded from the SpecsIntact Website at:

<https://SpecsIntact.wbdg.org/software>

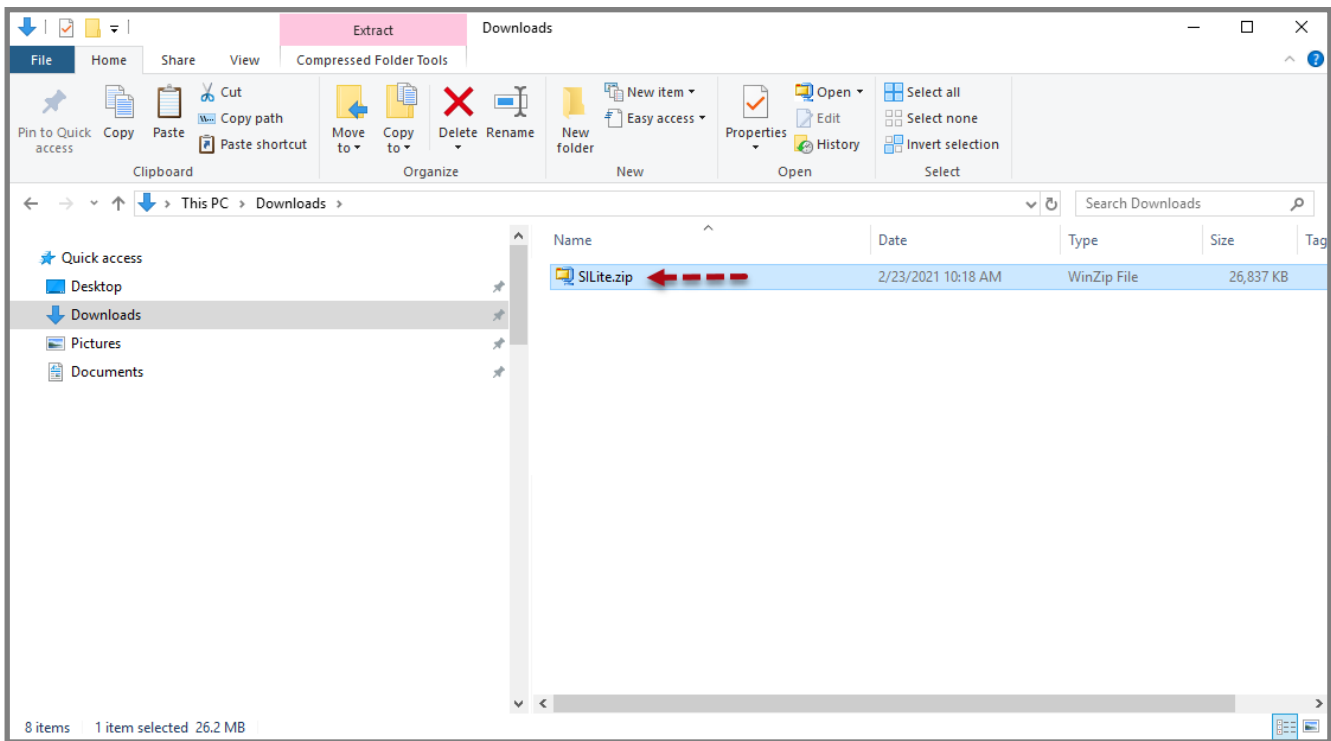
On the **Software Download Form**, *choose* the option to download the **SpecsIntact Lite** version.

What I Need To Know About The Configuration

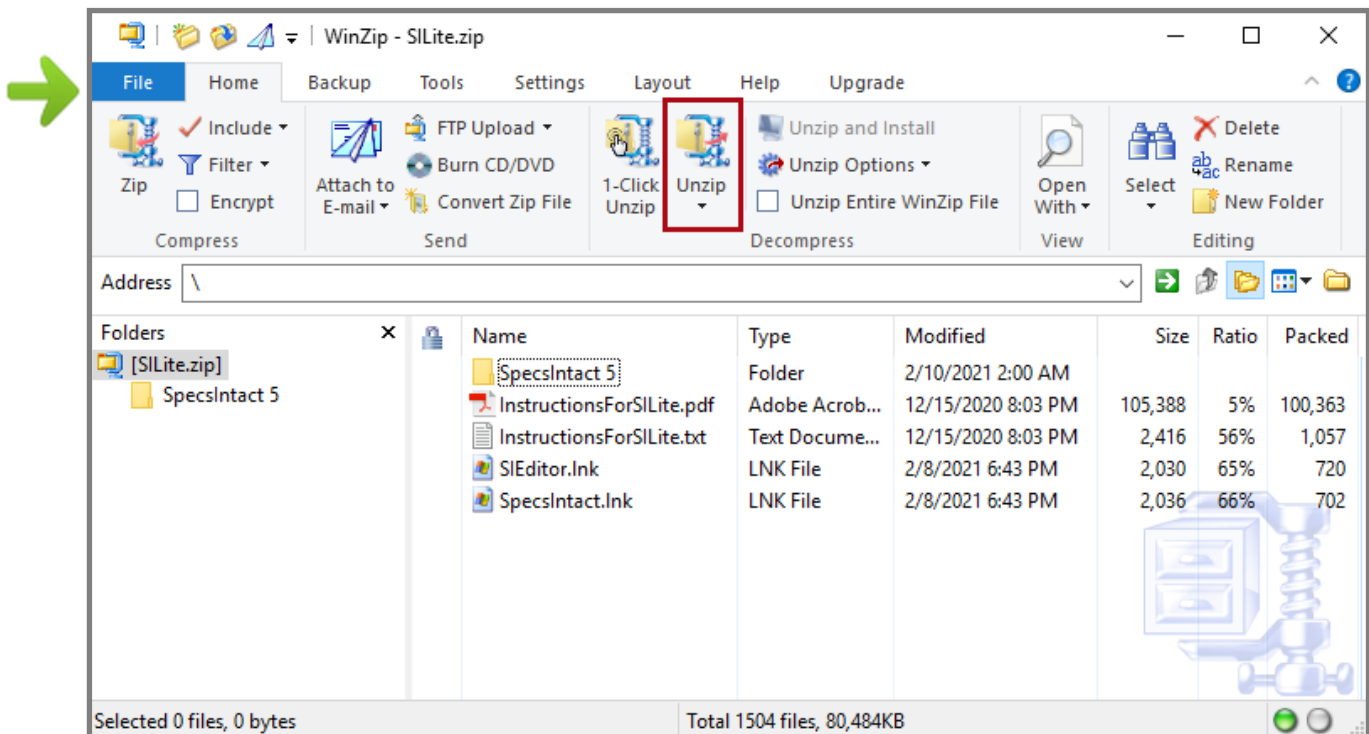
SpecsIntact Lite does not require an installation and will run independently and uses all the same files as other SpecsIntact versions. As you begin to use the SpecsIntact Lite version, it will create and maintain your SpecsIntact Registry settings along with files that are located in the users AppData or Application Data folder (for older Operating Systems), which are needed for SpecsIntact to function properly.

SpecsIntact Lite Setup

Once the download is complete, *open Windows File Explorer* to *locate* the **SILite.zip** file.



Double-click the **SILite.zip** file

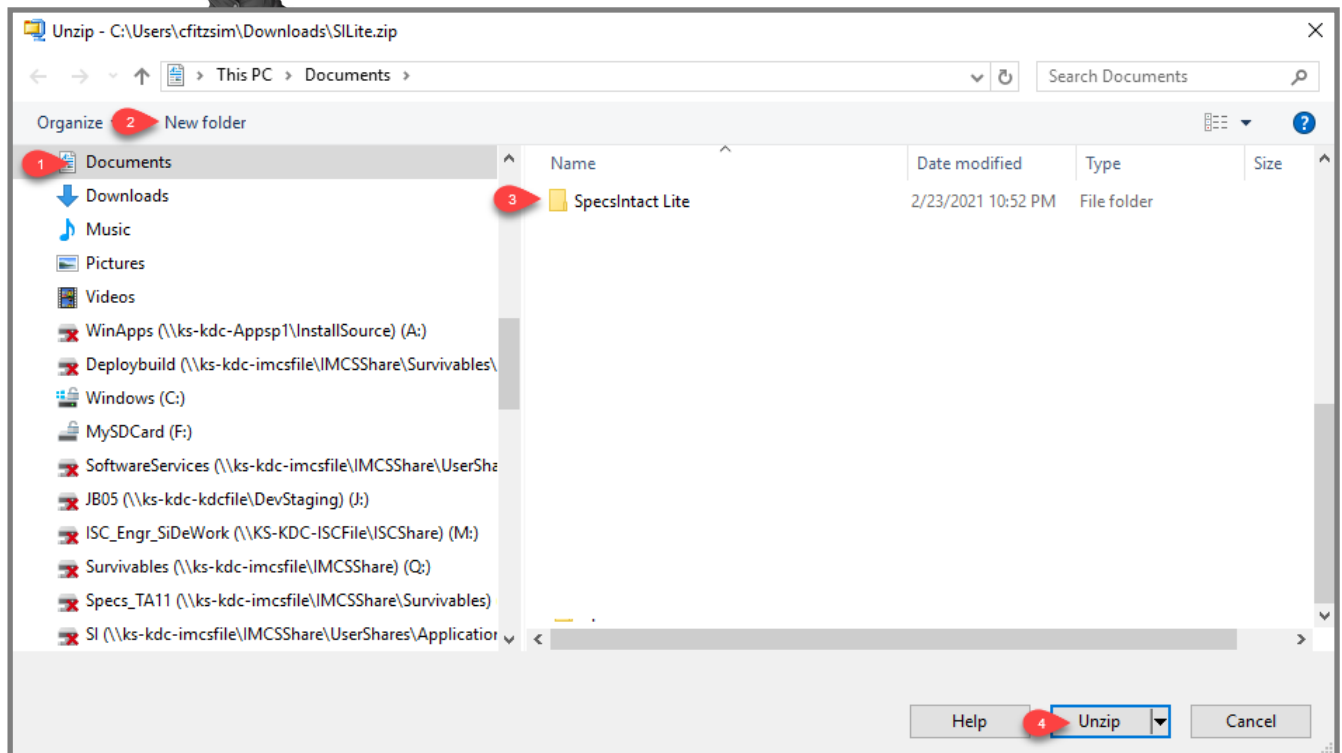


Click the **Unzip** button

SpecsIntact Lite Setup



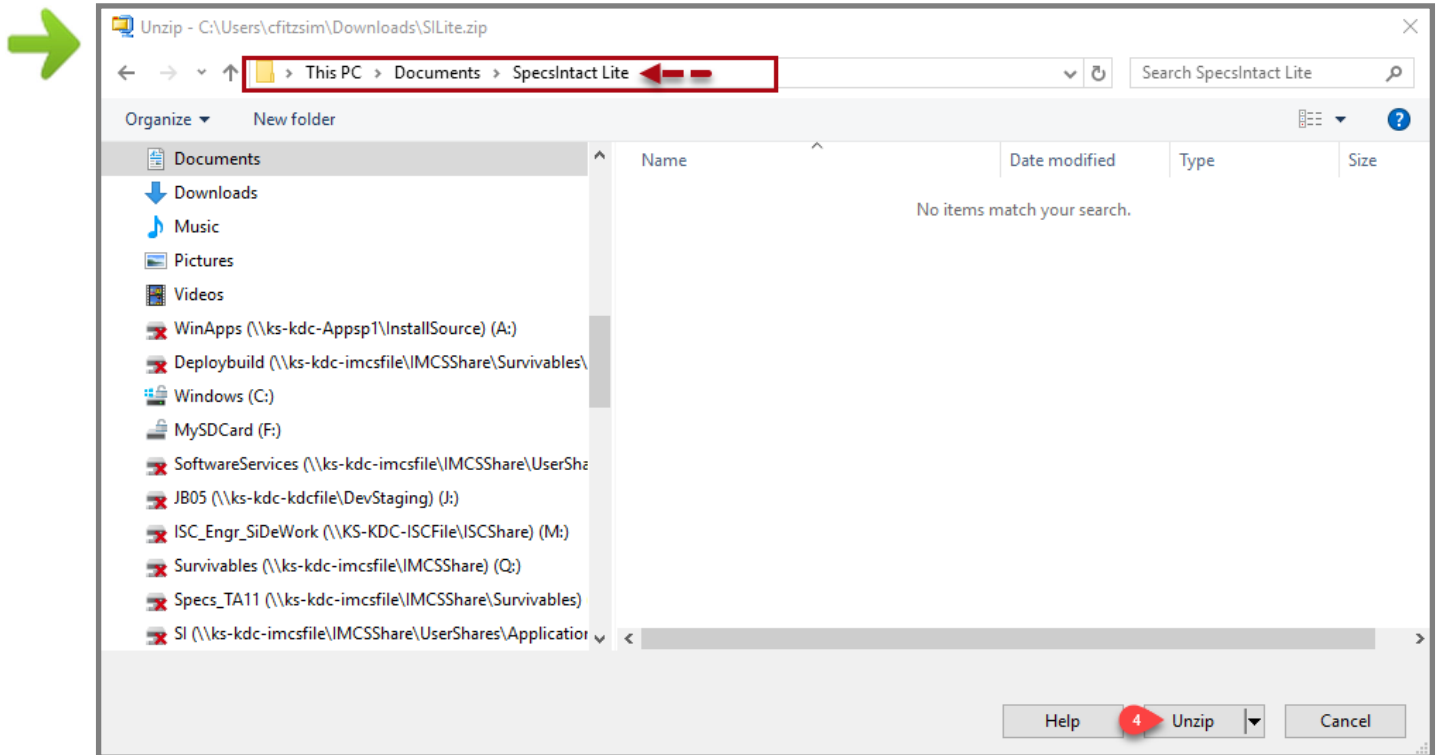
Important announcement for DoD Customers - In order for SpecsIntact Lite to function properly on your systems, you need to create the SpecsIntact Lite folder directly on your **C: Drive**



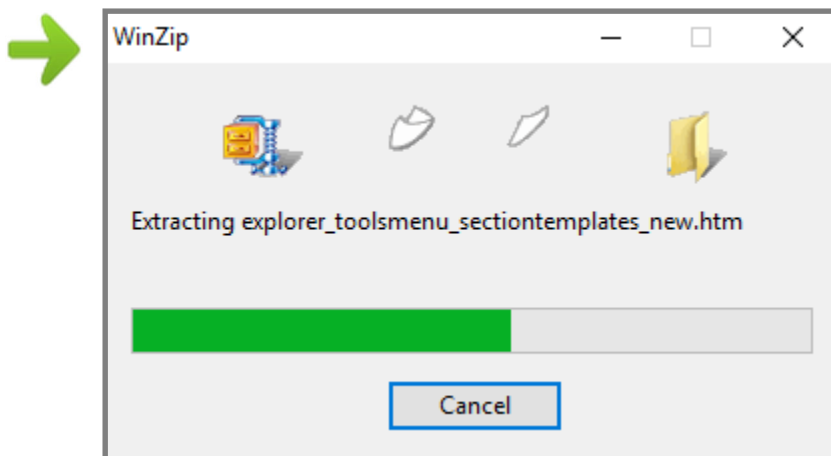
Select **Documents**, click **New Folder** and name it **SpecsIntact Lite**



SpecsIntact Lite Setup

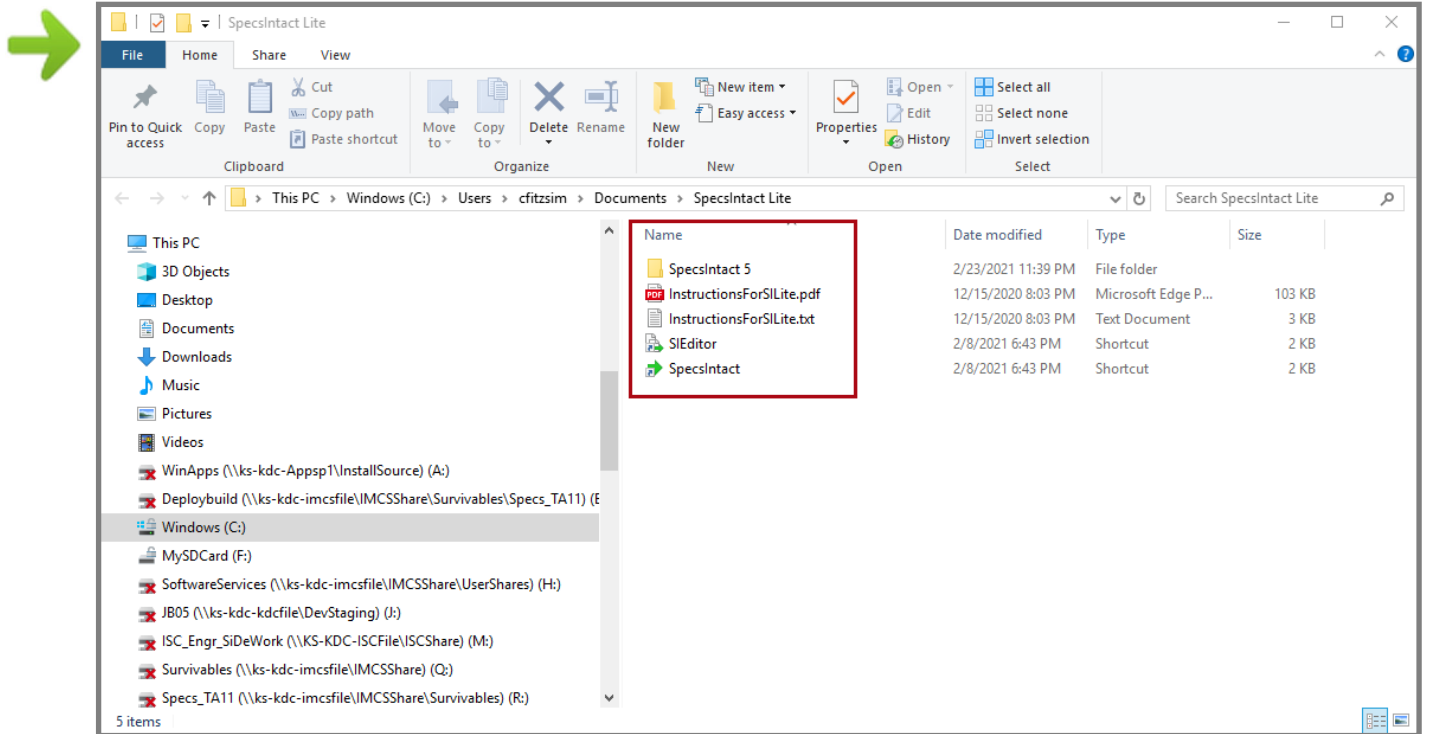


Double-click on the **SpecsIntact Lite** folder and click **Unzip**





WinZip begins extracting the files

SpecsIntact Lite Setup



Unzip Finished

START Now we have successfully extracted the files, you are ready to begin using the SpecsIntact Lite.

 From **Windows File Explorer** *double-click* the SpecsIntact  **SpecsIntact** shortcut to begin using SpecsIntact.

Now you are ready to proceed to Chapter 7 to finish the setup by establishing the Working Directories and Connecting your Masters!

Make sure you allow SpecsIntact create the Desktop shortcuts!



SpecsIntact Lite Setup

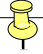
If this is the first time you have used SpecsIntact, you will need to refer to Chapter 7 to finish the setup by establishing your Working Directories and Connect the UFGS Master. If you are using SpecsIntact Lite in order to have an updated version, the software will automatically recognize your settings so no further setup would be required.

Publishing to PDF is an essential part of the Job and Master process, so you will need to have a PDF Printer. The software supports Adobe Acrobat and the integrated SpecsIntact PDF Printer. Since the SpecsIntact Lite version isn't a full installation, the SpecsIntact PDF Printer must be installed separately. Options to install the SpecsIntact PDF printer are available in the SI Explorer by *selecting Setup > 'Install SpecsIntact PDF Printer...'*

Keep in mind that adding a new printer driver might require administrative privileges, so you may need your IT Administrator to install it for you.



You will learn more about manually installing the SpecsIntact PDF Printer in Chapter 8.



What you learned from this chapter:

- ◆ That you can download SpecsIntact Lite from SpecsIntact Website's Software Page.
- ◆ SpecsIntact Lite does not require an installation that can run independently.
- ◆ SpecsIntact Lite will be located in your Documents folder or for our DoD customers, directly on the C: Drive.
- ◆ SpecsIntact will offer to create your Desktop shortcuts to make it easier to launch the application..
- ◆ If you want to take advantage of SpecsIntact's PDF printer, with this version you must manually install the printer in order to Publish to PDF.
- ◆ First time users must setup the Working Directories and Masters.
- ◆ If you are running SpecsIntact Lite in order to have access to the latest version, the software will recognize your settings.

Chapter 7

Working Directories & Connecting Masters



In this chapter you will learn:

- ◆ How to easily complete setup using the default settings
- ◆ How customize the setup during installation
- ◆ How to configure Working Directories and Connect Masters

In the previous chapters, we have learned about the different types of installations, as well as the proper method for downloading the software and how to install all three types. Now it is time to learn how to complete the setup.

As you learned in Chapter 1, Working Directories are one of the essential components of SpecsIntact since the Working Directories hold the Jobs and Masters you create. These Working Directories can reside on your local hard drive or a network drive. SpecsIntact also allows you to create Multiple Working Directories so you do not have to store all of your projects in the same location.

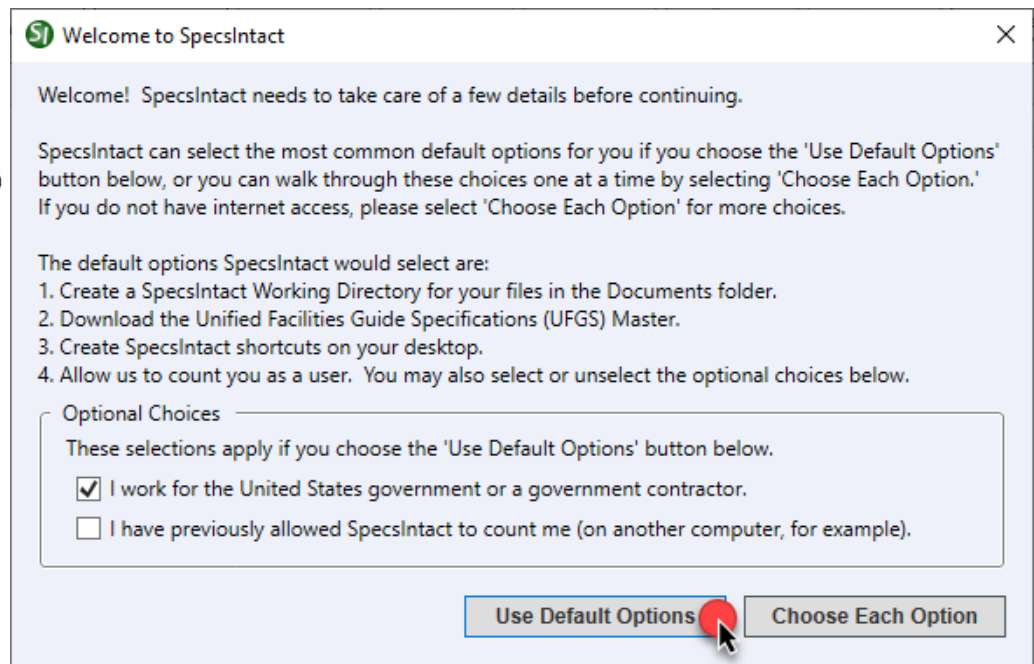
Before we get into all of the specifics of Working Directories and Masters, let's first explore the default options provided on the 'Welcome to SpecsIntact' window that only appears for new users once SpecsIntact has been installed and launched for the first time. The default features will streamline and simplify the setup process.



Working Directories

Default Setup Options

Since we have completed the installation, it is now time to finish the process by configuring SpecsIntact. If there have been no previous installation of SpecsIntact on your computer, you will receive the 'Welcome to SpecsIntact' window to complete the setup. The default options significantly decreases the frustration of setting up the SpecsIntact application, but also have the option to customize your settings but clicking the 'Choose Each Option' button, which we'll also explore.



If you choose to customize your setup skip to the **Custom Setup Options** on page 31.

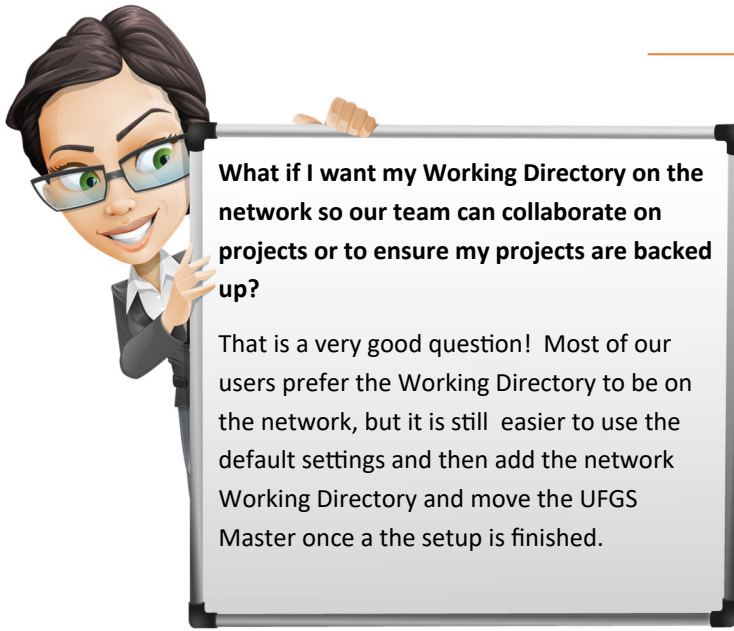
As defined in the welcome window, by choosing to use the default options, we will:

- ◆ Create the default Working Directory within your Documents folder:
C:\Users\YourUserID\Documents\SpecsIntactWD).
- ◆ Download and restore the Unified Facilities Guide Specifications (UFGS) Master
- ◆ Offer to create shortcuts on your desktop
- ◆ Finally allow us to count you as a user, which is done by selecting on of the options below 'Optional Choices' as illustrated above.



Working Directories

Default Setup Options



What if I want my Working Directory on the network so our team can collaborate on projects or to ensure my projects are backed up?

That is a very good question! Most of our users prefer the Working Directory to be on the network, but it is still easier to use the default settings and then add the network Working Directory and move the UFGS Master once a the setup is finished.



If you decide to leave the Working Directory within your systems Documents folder, ***verify that your system is backed up on a regular basis*** or use SpecsIntact's Backup and Restore utility to keep backup copies on your network drive or your companies file sharing system such as OneDrive, Google Drive, Dropbox, etc . This practice will eliminate catastrophic data loss in the event of hardware failure.

Before we add a Working Directory and move the UFGS Master, let's talk about Working Directories and their rules. Using Multiple Working Directories tend to be more cumbersome! Each Working Directory has its own structure to include folders for Downloads, Jobs, Masters and Template as indicated in Chapter 1.

Knowing the rules associated with the Working Directories, will help you avoid issues down the road!

WORKING DIRECTORY RULES



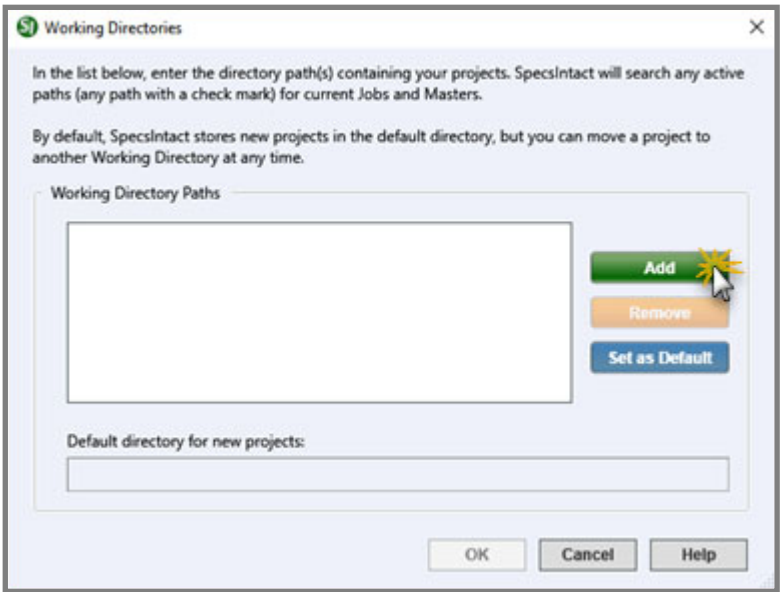
- ◆ **Avoid** creating Working Directories in the same location in which SpecsIntact is installed or directly on the Root Drive, for instance **C:** or **S:**. This will not only cause problems with your Working Directories, but the Masters as well.
- ◆ **Avoid** placing Working Directories within **OneDrive**. Depending on your OneDrive configuration, issues can occur with connecting and accessing Masters and in more severe cases result in corrupt Sections.
- ◆ **Keep the Working Directories Simple!** Avoid making the path too long. We're only using a path of four levels and **no more than 200 characters**.
- ◆ **Do not use Universal Naming Convention (UNC) paths!** SpecsIntact does not fully support UNC paths. This will cause intermittent issues while performing various tasks.
- ◆ **Do not use Jobs or Masters in the path name**, since these are folder names that are already in use by the software.
- ◆ **Avoid using special characters**, other than a hyphen or underscore in the path name, as this will cause unexpected results.

Working Directories

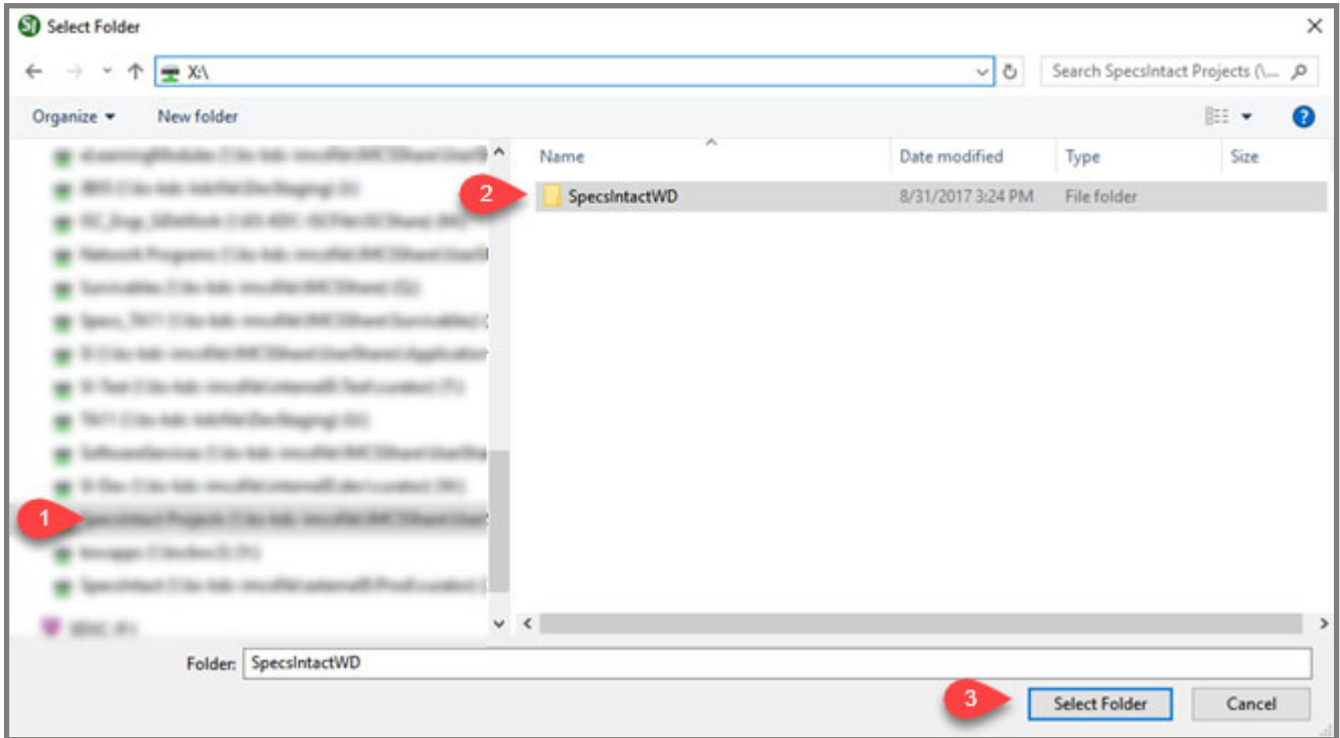
Default Setup Options



From the **SI Explorer**, *click* the **Working Directories** button



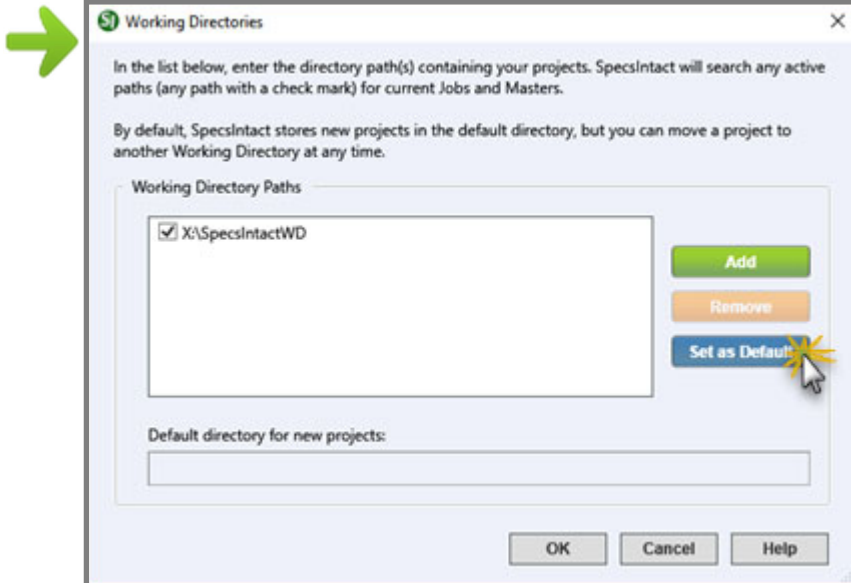
When specifying a new Working Directory, *browse* to the desired location on the **Network** drive to select either an existing folder or create a new SpecsIntactWD folder.



Click **Select Folder**

Working Directories

Default Setup Options



The **Set as Default** allows you to designate the highlighted **Working Directory** as the default for new Jobs and Masters.

Click **Set as Default** and click **OK**

Multiple Working Directories



When you choose to use **Multiple Working Directories**, you should create a separate Working Directory specifically for your **Masters**!



From the **SI Explorer**, click the **Properties** button



Continue to **Properties** 

Working Directories

Default Setup Options

To relocate the UFGS Master from your Local to **Network** drive, *click* the dropdown arrow in the path field, and select the Working Directory on your network .



Properties for Master UFGS

General

Master name: * UFGS Date created: 2/19/2021 4:49:03 PM

Title: * Unified Facilities Guide Specification - Nov 2020

Lead specifier: [dropdown] Source: [text]

Version: [text]

Path: C:\Users\cfitzsim\Documents\SpecsIntactWD (1)

C:\Users\cfitzsim\Documents\SpecsIntactWD

X:\SpecsIntactWD (2)

Submittal Register Format

Unified Submittal Descriptions

UFGS Army NASA Navy

Print OK (3) Cancel Help

Click **OK**



! Be patient. The UFGS Master consists of over 700+ Sections, so it *may take some time to relocate for reasons not in our control such as your network and whether you are working remotely across a VPN connection.*

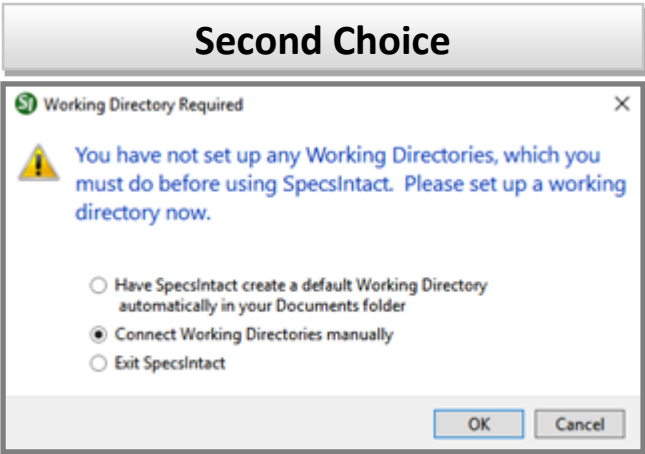
Working Directories

Custom Setup Options

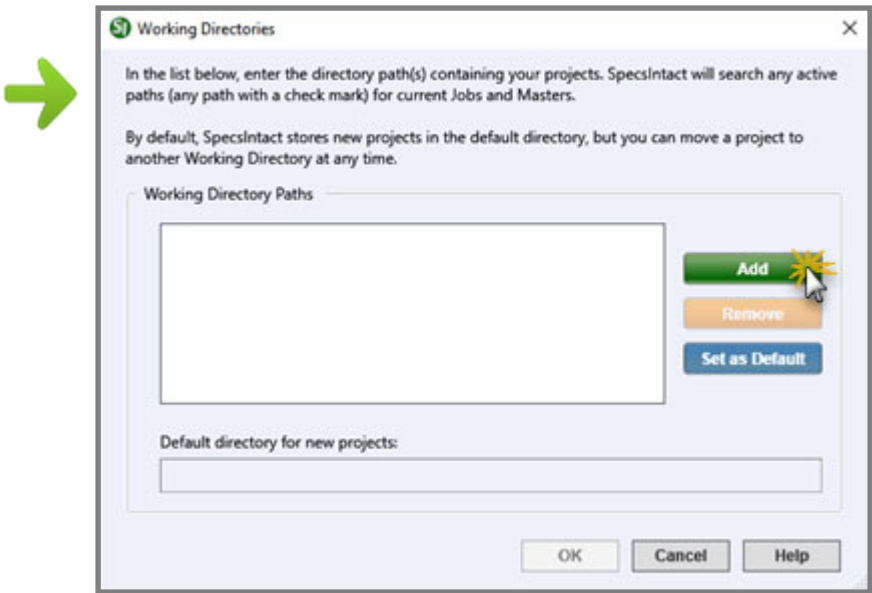


Click OK

The first choice is the default setting for **New Installations!**
Click **OK** and continue to **Connect Masters Setup Options**



Click OK



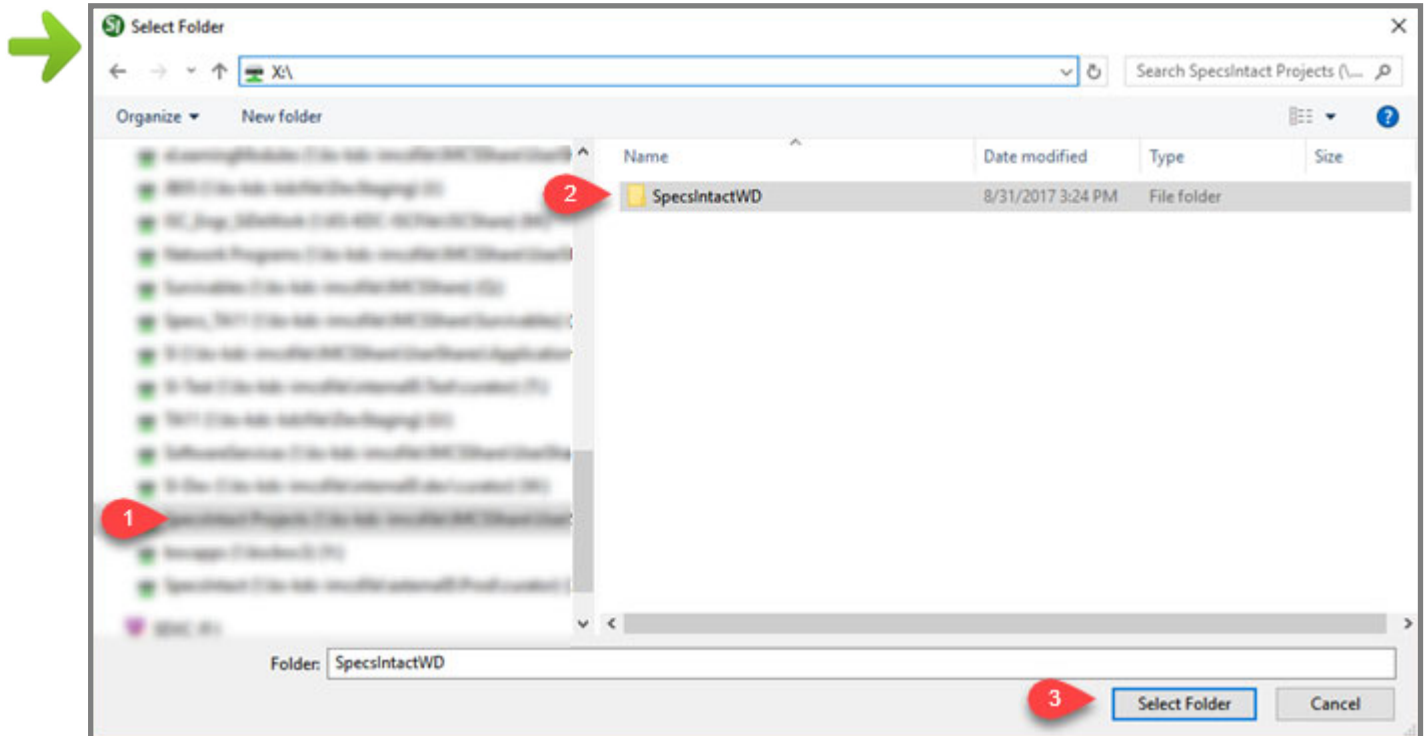
Click Add



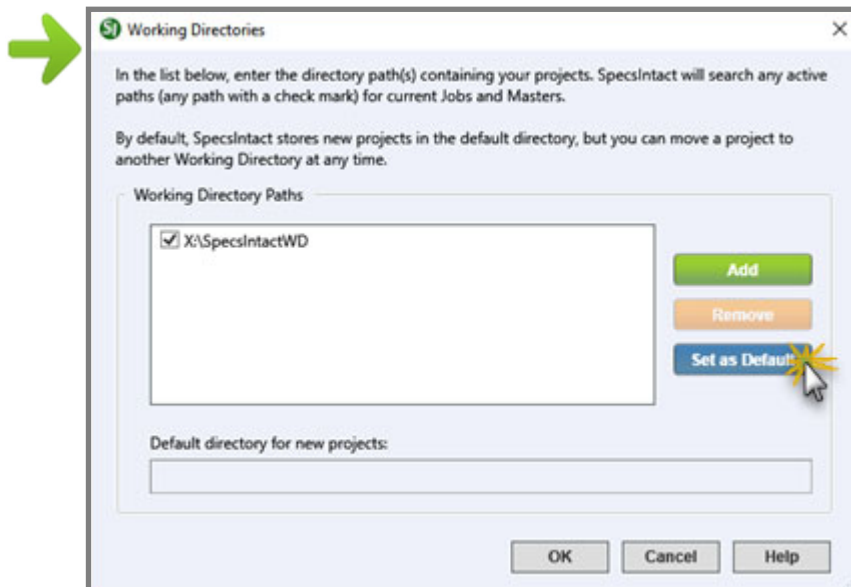
Working Directories

Custom Setup Options

When specifying a new Working Directory, *browse* to the desired location on a **Local** or **Network** drive to select either an existing folder or create a new one.




Click **Select Folder**



Click **Set as Default** and click **OK**

The **Set as Default** allows you to designate the highlighted **Working Directory** as the default for new Jobs and Masters.

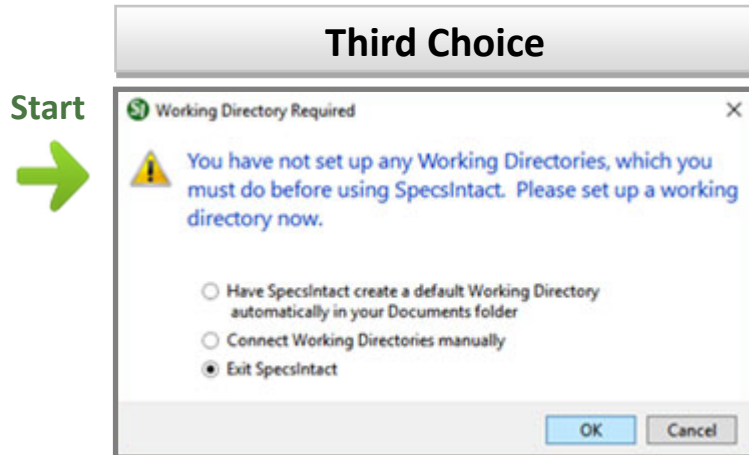
Multiple Working Directories

 When you choose to use **Multiple Working Directories**, you should create a separate Working Directory specifically for your **Masters**!

Continue to **Connect Masters Setup Options** 

Working Directories

Custom Setup Options



Click **OK**

When you have chosen the third option to **Exit SpecsIntact**, the Setup process will stop and the application will close.

We're not quite finished!

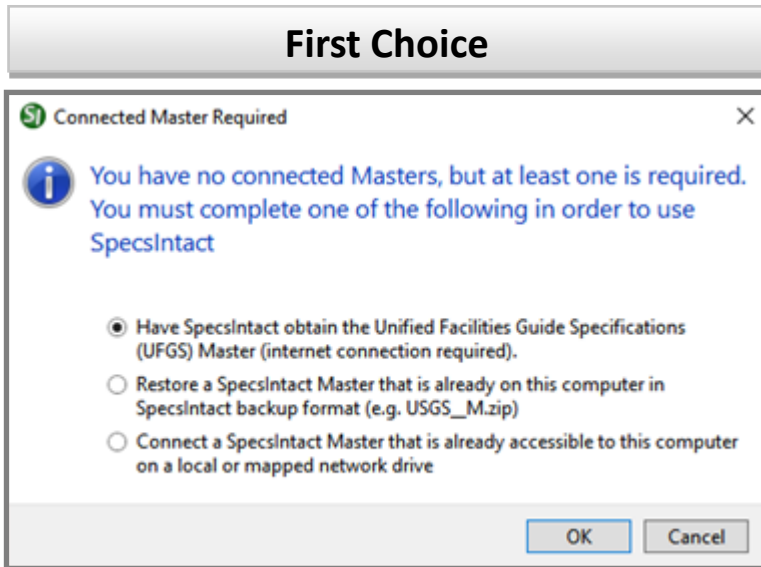
Now we have to **Connect our Masters.**



Connect Masters

Custom Setup Options

Start

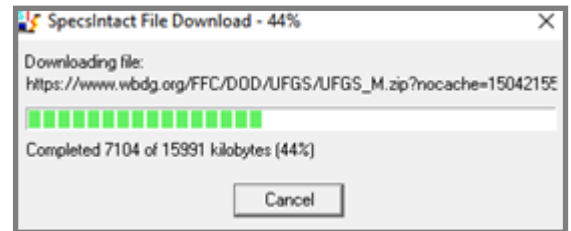


The first choice is the default setting for **New Installations!**

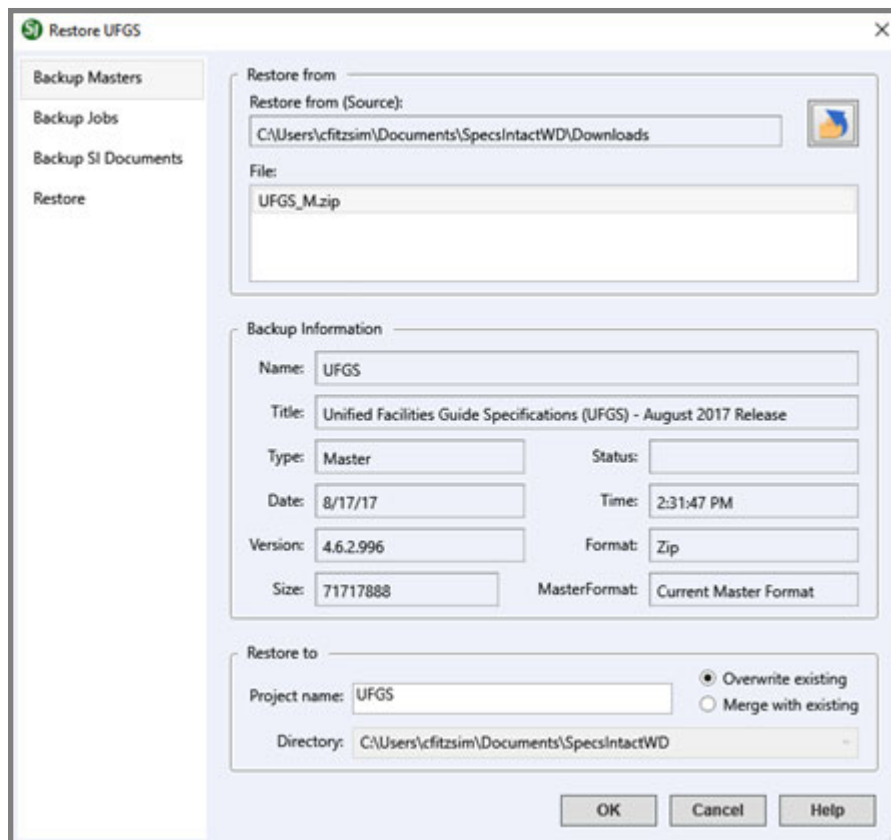


Click **OK**

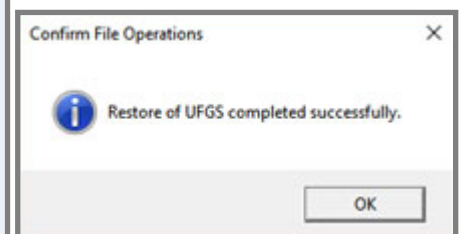
The software connects to the Whole Building Design Guide (WBDG) Website to download the UFGS Master.



Status Screen, no action required



Click **OK**



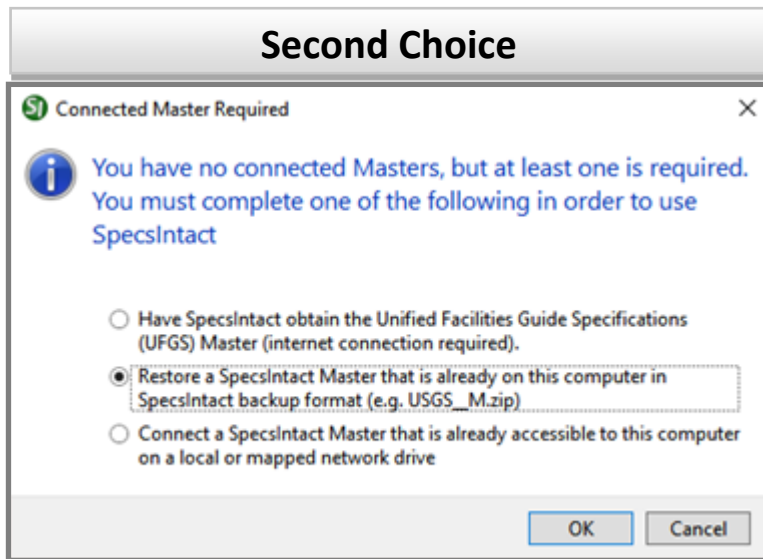
Click **OK**



Connect Masters

Custom Setup Options

Start

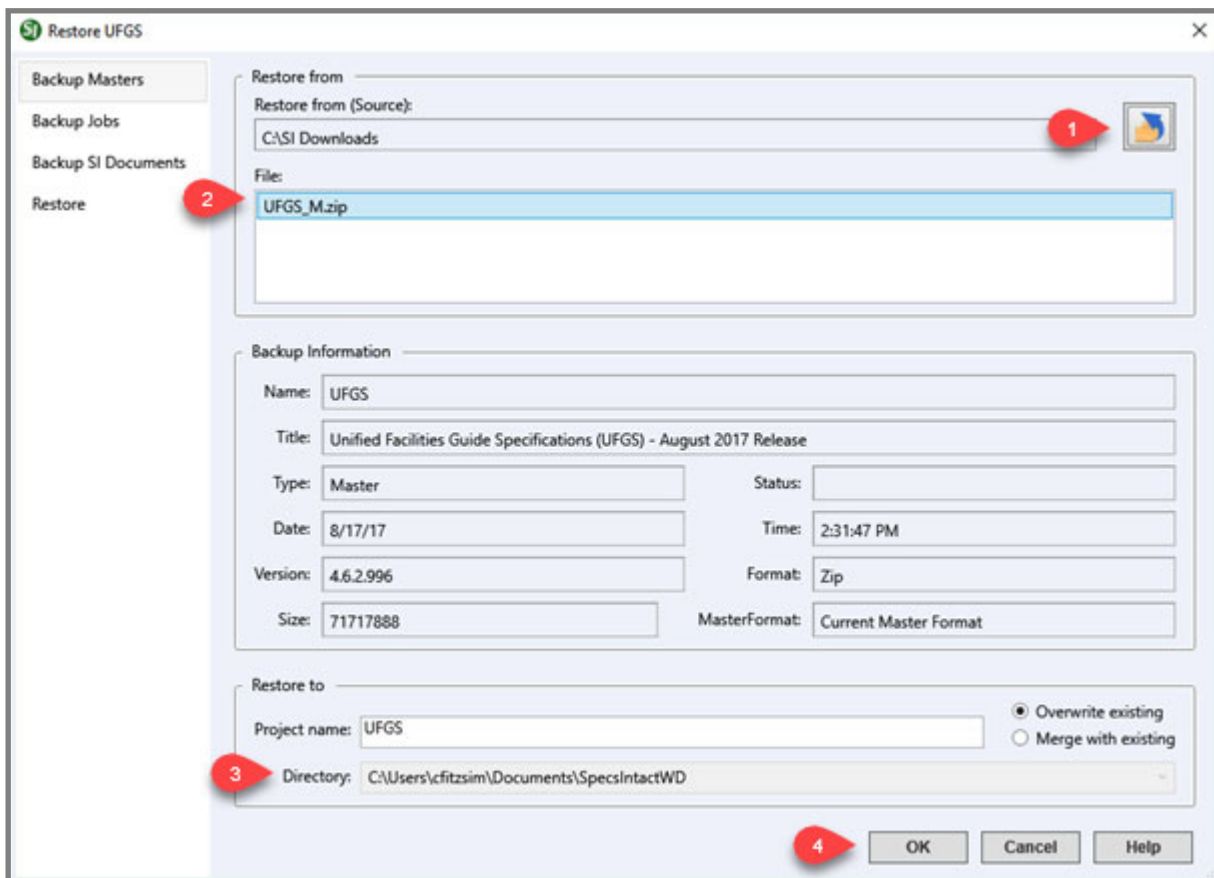


Click OK

The second choice allows you to **Restore** the UFGS Master that was previously downloaded and resides on your computer.



When the **Restore** screen appears, *select* the **Browse** button (Step 1) to locate the folder where you downloaded the UFGS Master. After returning to the **Restore** screen, *select* the **UFGS_M.zip** file (Step 2) *verify* the directory path (Step 3) and *select* **OK** (Step 4).



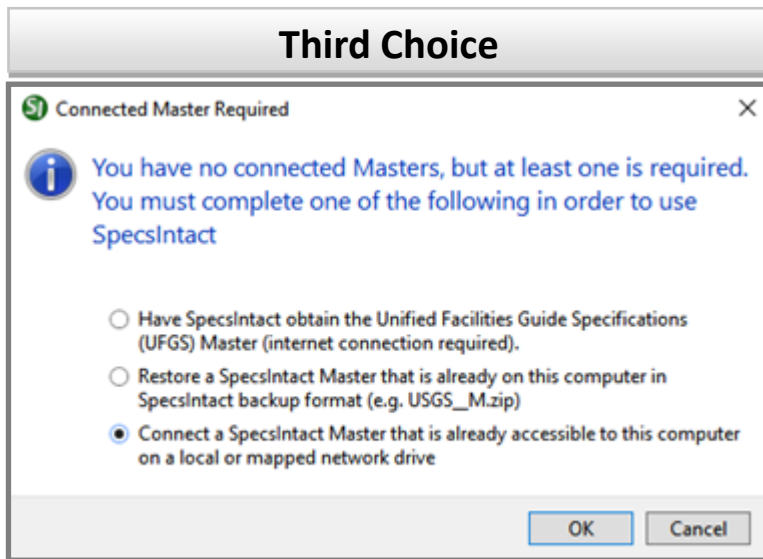
Click OK



Connect Masters

Custom Setup Options

Start

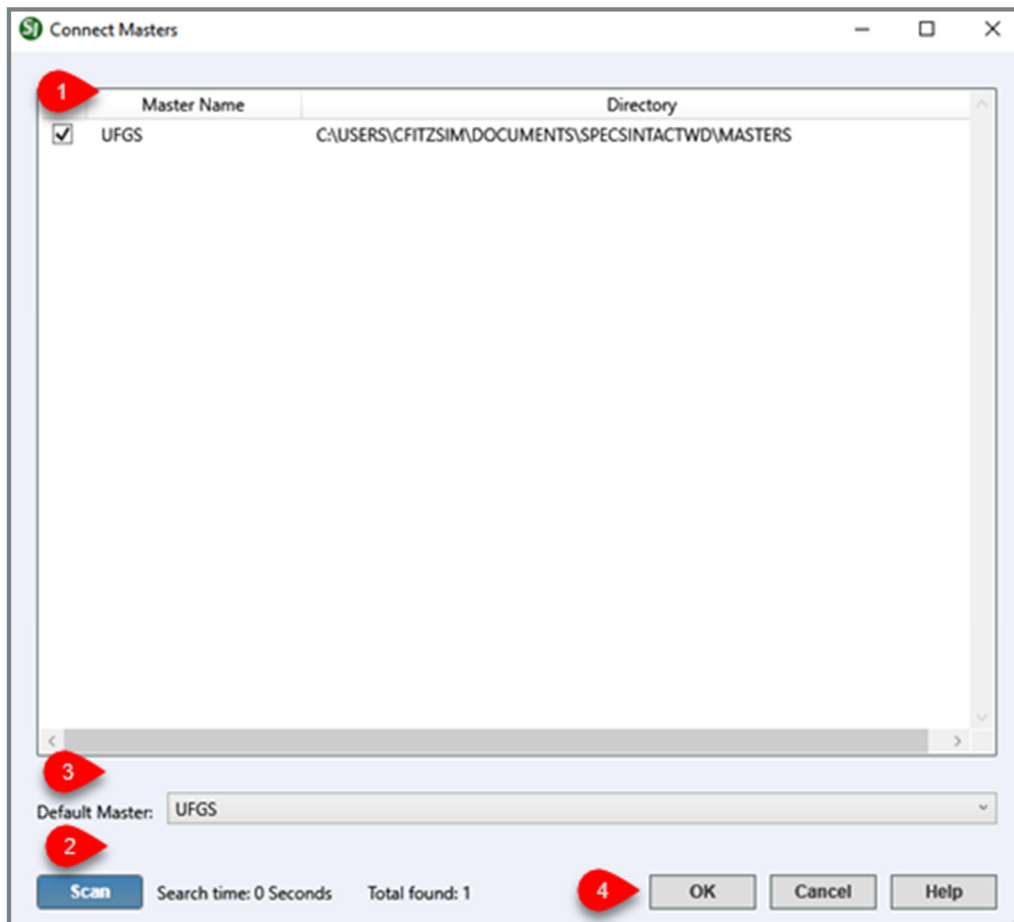


Click **OK**

The third choice allows you to **Connect** to a Master that is already available.



As soon as you select the third choice, the software brings you to the **Connect Masters** screen, so you can either **select a Master** (Step 1) from the list or **Scan** (Step 2) your drives for a Master. If you have more than one Master listed and selected, you need to **set the Default Master** (Step 3), then **select OK** (Step 4).



Click **OK**

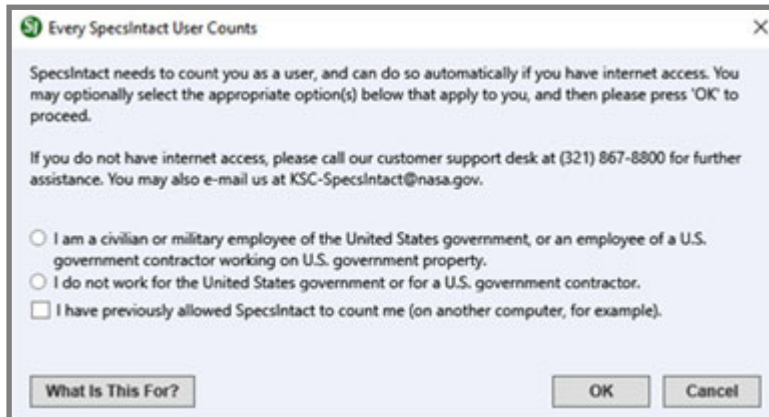
The **Scan** option allows you to search for a Master on any drive or network available on your system!



Counting Users

Custom Setup Options

You're almost done! All you have left to do is allow us to count you!



Click **OK**



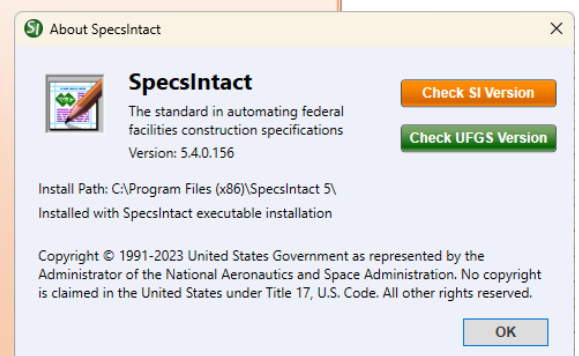
Once you have completed the installation and setup, the SI Explorer will open and display the contents of your **Jobs** and **Masters**. If you have connected to a Working Directory that contains Jobs, they too will be displayed. As soon as you open SpecsIntact, the software will locate the same **Working Directories** and **Masters** unless you go through the Setup menu to change them.



Is it necessary to uninstall SpecsIntact if we are just updating to the latest version?

No, if you only want to update the latest version of SpecsIntact, just download and run the installation program. If you are not sure where SpecsIntact is installed on your system, from the **SI Explorer**, go to the **Help** Menu and choose **About SpecsIntact**. The installation path will be displayed.

If you choose to uninstall SpecsIntact, all settings will be reset to the defaults, Prior to uninstalling the software, make sure you go to **Setup | Working Directories** to capture the connected Working Directories so you can easily reconnect them once you have reinstalled the software.





Counting Users

Custom Setup Options

S_{upport} P_{roblems} E_{ncountered} C_{ommonly}

When I open SpecsIntact the “Every SpecsIntact User Counts” window continues to open, how can I close this window so it doesn’t appear every time I open the software?

Debbie in Denver

Debbie, In order to count you as a SpecsIntact user, you must have Internet access. If you are able to connect to the internet, go ahead and do so prior to opening SpecsIntact. If not, contact our Technical Support Desk at (321) 867-8800. They will be able to provide you with a code that will close the window.



What you learned from this chapter:

- ◆ You can use a single Working Directory or Multiple Working Directories.
- ◆ Multiple Working Directories are more cumbersome.
- ◆ Jobs can be shared by setting up Working Directories on the Network.
- ◆ When using Multiple Working Directories, you should create one Working Directory strictly for your Masters that will be shared by everyone.
- ◆ Keep Working Directories simple! Avoid using long paths for your Jobs and Masters.
- ◆ There are three choices for connecting Masters during the Installation Process.
- ◆ SpecsIntact needs to count you as a user.
- ◆ Its not necessary to uninstall SpecsIntact if you are just wanting to update to a newer version.
- ◆ If you uninstall SpecsIntact, we do not touch your Working Directories.

Chapter 8

Installation Tips



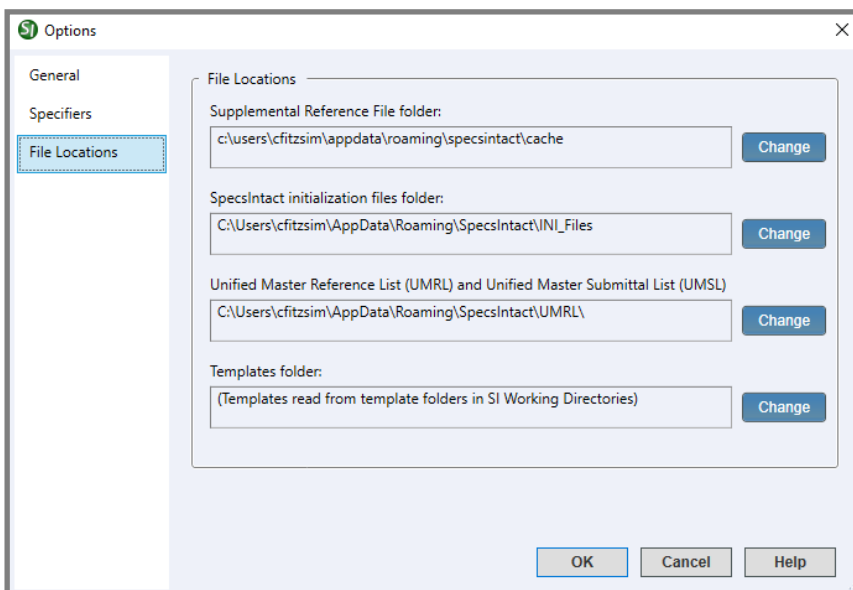
In this chapter you will learn:

- ◆ System Files
- ◆ SpecsIntact Updates
- ◆ SpecsIntact PDF Manual Setup
- ◆ Pin Shortcuts to Start or Taskbar

This Chapter will cover some additional tips to help you with your installation. With so many government organizations and companies restricting user permissions, it is important to ensure users have access to the SpecsIntact system files. In newer versions of SpecsIntact, these files have been relocated to the Operating System's AppData folder. This change was made in order to prevent problems when the user permissions have been restricted or locked down.

Application Data Folder Location:

C:\Users\YourUserID\AppData\Roaming\SpecsIntact



If you choose to move the system files to a different location other than the default, you can do so from the **SI Explorer's Setup > Options** and *choose File Locations*.

If you move these files, **do not** place them in a shared Working Directory, otherwise the files will continually be overwritten by each user!

Installation Tips

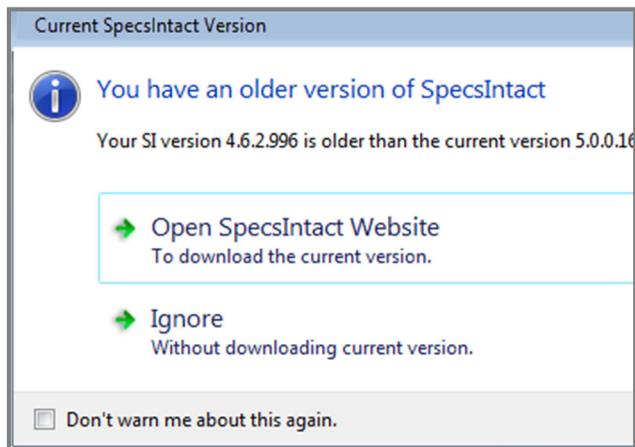
Updating the Software and UFGS

Regardless if you are working on a project or not, it is important to keep SpecsIntact updated in order to take advantage of the new features available to you. To perform an update, you will simply run the installation over the top of the current installation in order to retain your settings such as the Working Directories and Connected Masters. Updating the software will not touch your Working Directories to include your Jobs or Masters therefore, you should not hesitate to update!

When you open SpecsIntact, it will automatically check for newer versions of the **software** and inform you when your software is out of date.

Traditional Local Installations will allow you to update the software by overlaying the previous version. In order to update the software to the latest version, select the 'Open SpecsIntact Website' option to

download the current version. You can refer to Chapter 3 and Chapter 4 if you should need assistance with the download and installation process.




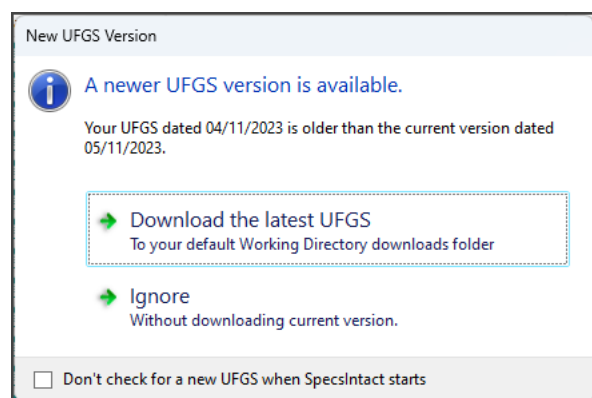
MSI (Silent) Installations are typically pushed to the end-users system, and requires the removal of a previous MSI Installation before the newer version can be installed. The MSI Installation is by far the most popular installation for IT Administrators who want to perform a silent pre-configured installation, do not support automatic updates if SpecsIntact is pushed to your system through a silent Install, you will need to contact your IT

Administrator in order to obtain the latest version.

If you do not want SpecsIntact to check for newer versions, check the option “**Don't warn me about this again.**” This feature is particularly useful for customers who rely on their IT Service Provider to provide the latest approved software.

When SpecsIntact detects the **UFGS Master** is out of date, you have the option to Download the latest version.

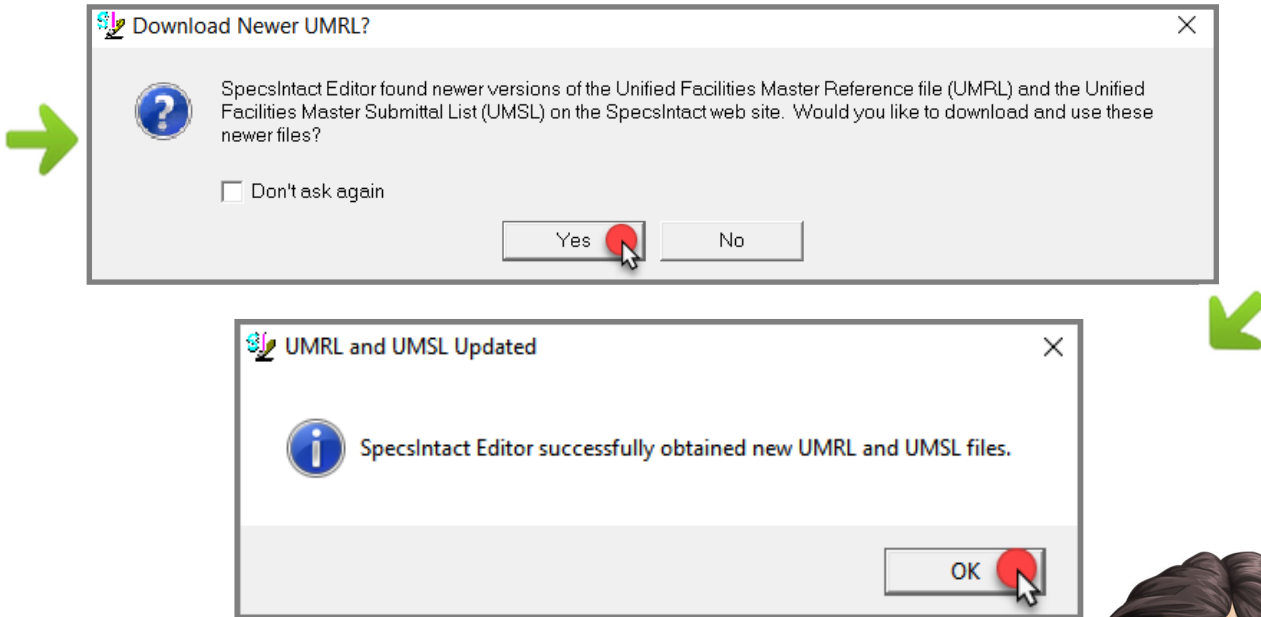
 If you want to keep the current UFGS Master, make sure to duplicate it as **UFGSYYYYMM** prior to updating.



Installation Tips

Updating the UMRL and UMSL

Upon opening the SpecsIntact Editor for the first time and upon subsequent updates to the Unified Facilities Guide Specifications (UFGS) Master, the SI Editor will automatically check and download the latest **Unified Master Reference List (UMRL)**, and **Unified Master Submittal List (UMSL)**. It is important to keep these files updated since they are used by the SI Editor's Reference and Submittal Wizards.



S_{upport} P_{roblems} E_{ncountered} C_{ommonly}

“If I am in the middle of a Job, is it okay to install the latest version of SpecsIntact?”

Maggie in Manhattan

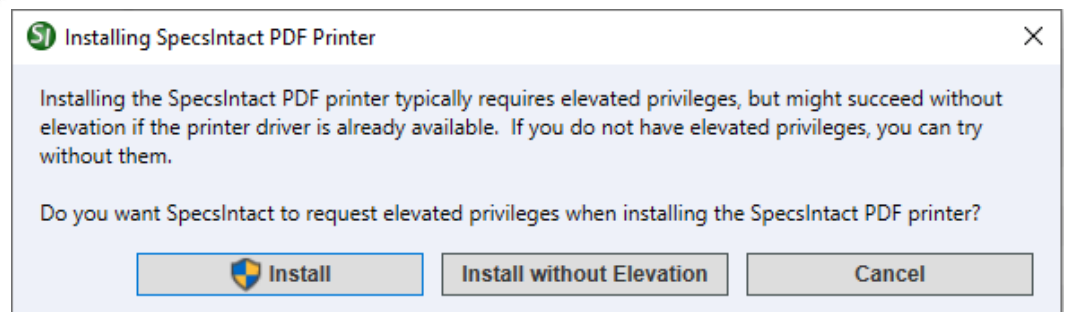
Maggie, We actually encourage our users to update SpecsIntact as soon as possible. Updating the application to the latest version provides you with better tools for doing your projects. Updating will not touch your Working Directories to include your Jobs or Masters therefore, you should not hesitate to update.

SpecsIntact PDF Setup

In Chapter 6, we mentioned that Publishing to PDF is an essential part of the Job and Master process, and that you will need to

have a PDF Printer. The software supports Adobe Acrobat and the integrated SpecsIntact PDF Printer. The SpecsIntact PDF printer is made available during the SpecsIntact Installation process as an optional feature. Since the SpecsIntact Lite version is not a full installation, the SpecsIntact PDF printer cannot be installed and must be done separately. If you have the SpecsIntact Lite version or a Local Installation, but do not have the SpecsIntact PDF Printer, you can go to the SI Explorer's **Setup** Menu and *choose* **Install SpecsIntact PDF Printer**.




Keep in mind that adding a new printer driver may require administrative privileges, so you may need your IT Administrator to set it up for you.



For SpecsIntact to install the SpecsIntact PDF Printer, you may require elevated privileges. First try to install the printer without elevated privileges by *clicking* the **Install without Elevation** button. As long as the driver resides on your system, you'll be able to install the SpecsIntact PDF printer. If you cannot install the SpecsIntact PDF printer, then your will be required to *click* the **Install** button and will need your IT Administrator's assistance.



WINDOWS 8 AND 10

1. Select the **Start** button 
2. From the **Start Menu**, select the **Settings** button 
3. From **Windows Settings**, select **Devices**
4. Below **Devices**, choose **Printers and scanners**
5. Below **Printers & scanners**, select **Add a printer or scanner**
6. At the bottom of the list, select **The printer I want isn't listed**
7. **At the User Account Control Window**, select **Yes**
8. Below **Find a printer by other options**, choose **Add a local printer or network printer with manual settings**, and select **Next**
9. Below **Choose a printer port**, choose **Create a new port**
10. Next to **Type of port**, select the drop-down and choose **Local Port**, and select **Next**
11. Under the **Enter a port name**, type `C:\ProgramData\SpecsIntact\PDF\document.ps`
12. Select **Next**
 If the **only** manufacturers listed are **Microsoft** and **Generic**, click the **Windows Update** button. Wait for the printer drivers to download from Microsoft's Website, which will take several minutes or more to complete.
13. Below **Manufacturer**, choose **Samsung** (recommended) or **Konica**
14. Below **Printers**, choose **Samsung Color Laser PS Class Driver** (Recommended) or **Konica Minolta PS Color Laser Class**, select **Next** (If neither of the printer drivers are available, see the list of alternative printers on the next page)
15. For the **Which version of the driver do you want to use**, choose **Use the driver that is currently installed (recommended)**, select **Next**
16. For the **Printer name**, type **SpecsIntact PDF** (the printer name is case sensitive and must be exact!), select **Next**
17. Under **Printer Sharing**, choose **Do not share this printer**, select **Next**
18. On the **You've successfully added the SpecsIntact PDF** printer confirmation window, select **Finish**

Just in case you do not have the two recommended built-in Windows drivers (Samsung Color Laser PS Class Driver or Konica Minolta PS Color Laster Class), there are other options available that work well with the SpecsIntact PDF printer. →

ALTERNATIVE PRINTER DRIVERS



- ◆ HP Color LaserJet 2800 Series PS
- ◆ HP Color LaserJet 8500 PS
- ◆ HP Color LaserJet 4550 PS
- ◆ HP Universal Printing PS (v5.2)
- ◆ HP Color LaserJet 8550-PS
- ◆ HP Color LaserJet 5/5M PS
- ◆ HP Color LaserJet PS

Manually pinning a Shortcut to either the Start Menu, Taskbar or both will allow to access SpecsIntact quickly. Here's how:

Windows 11

- ◆ *Select **Start*** from the taskbar
- ◆ *Select **All Apps***
- ◆ From the list of applications, locate and expand the **SpecsIntact Program Group**
- ◆ From the dropdown list, *right-click on **SpecsIntact*** and *choose **Pin to Start*** and/or *select **More*** and *choose **Pin***

Windows 10

- ◆ *Select **Start*** from the taskbar
- ◆ From the list of applications, locate and expand the **SpecsIntact Program Group**
- ◆ From the dropdown list, *right-click on **SpecsIntact*** and *choose **Pin to Start*** and/or *select **More*** and *choose **Pin to Taskbar***



What you learned from this chapter:

- ◆ System files reside under the users AppData folder and can be relocated through **Setup > Options**
- ◆ SpecsIntact will inform you when a newer version of the software, UFGS, UMRL and UMSL are available
- ◆ How to manually install the SpecsIntact PDF printer drivers
- ◆ How to Pin a shortcut to the Start menu and Taskbar

Page Intentionally Left Blank

SpecsIntact

Learning Guide Series

Email: SpecsIntact@usace.army.mil

Website: <https://SpecsIntact.wbdg.org>

Phone: 256.895.5505

U. S. Army Corps of Engineers

SpecsIntact Installation Guide

Learning Guide Series



Trim For Binder
Spine Label