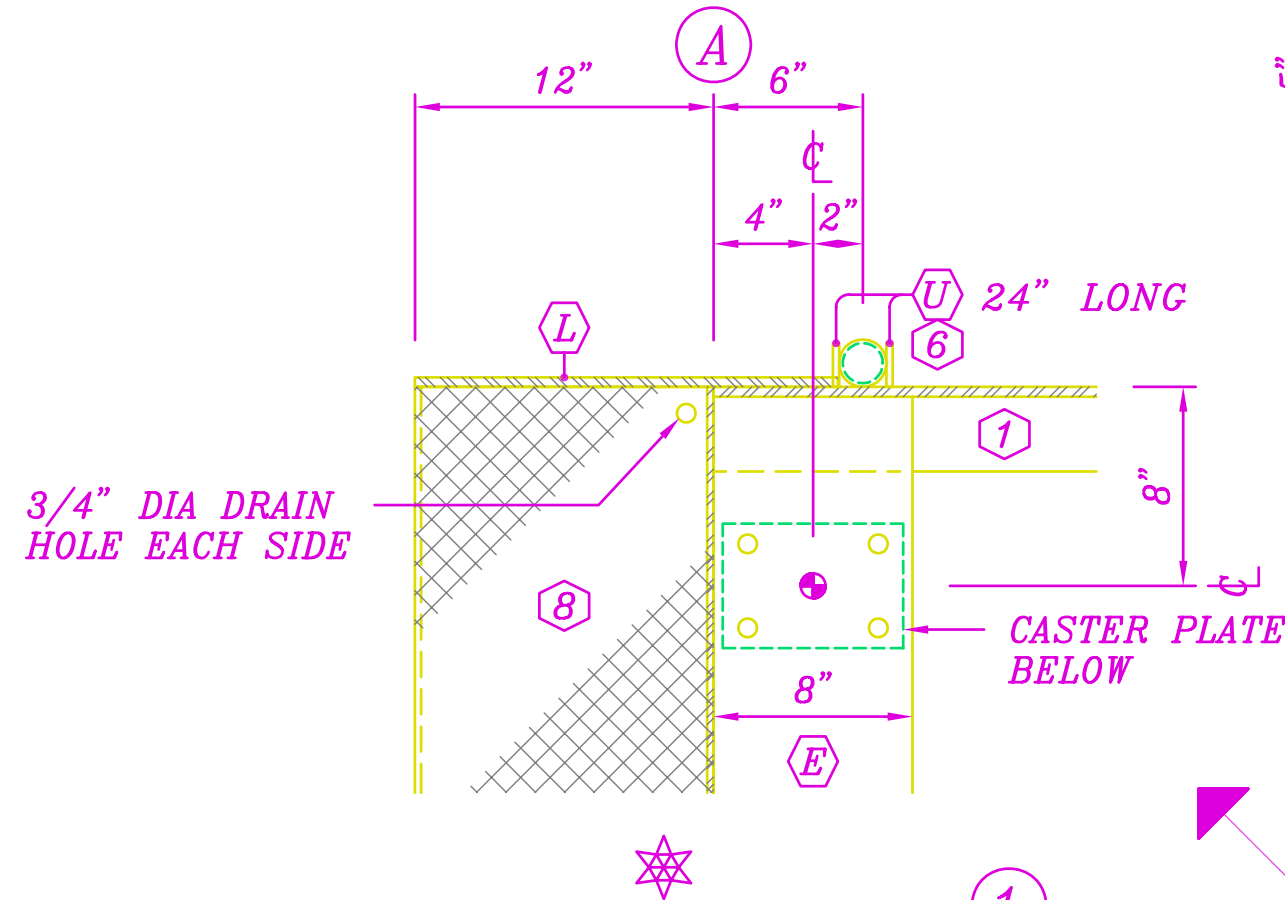
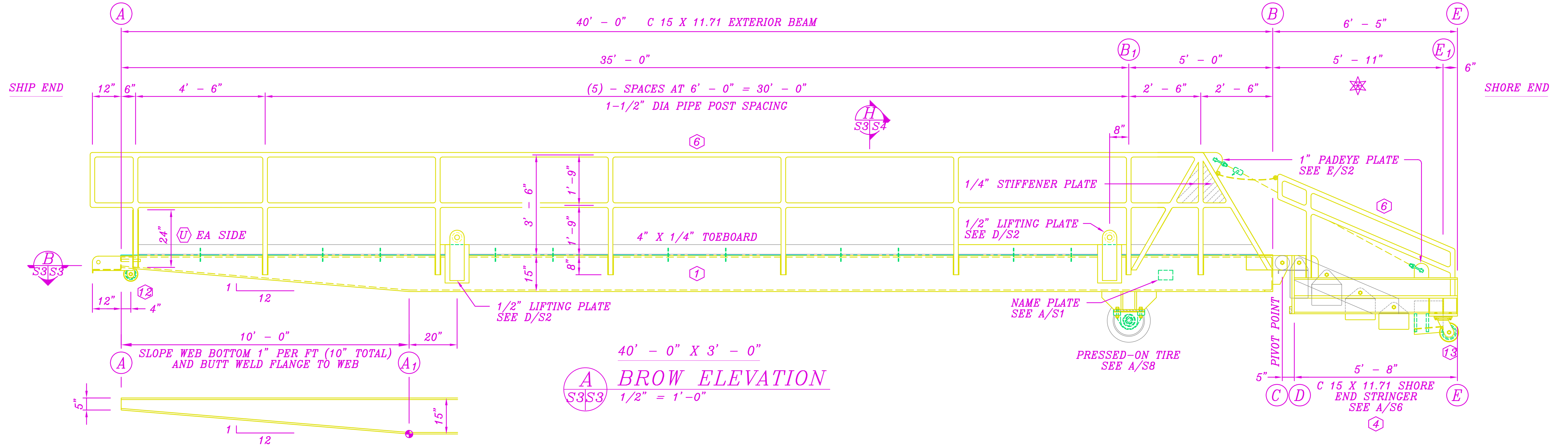
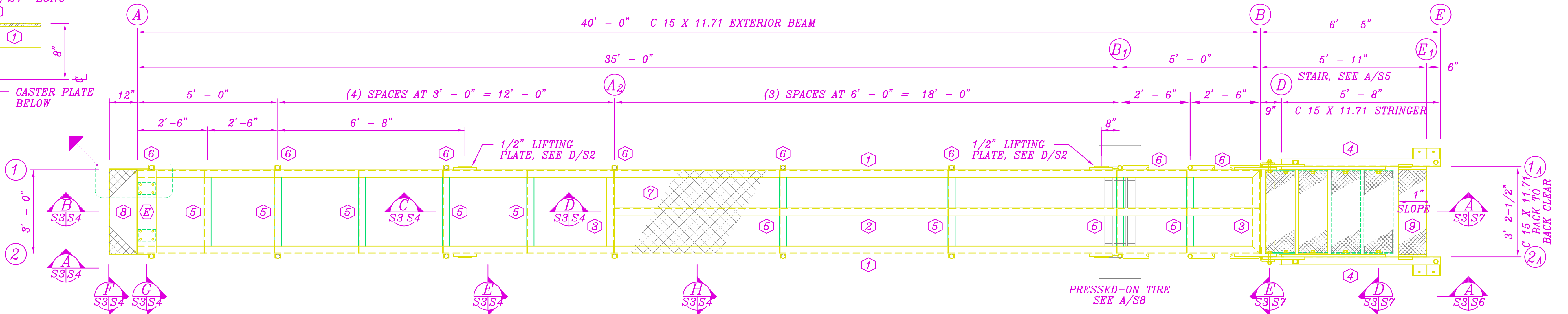


02-90519 \ 290519S3

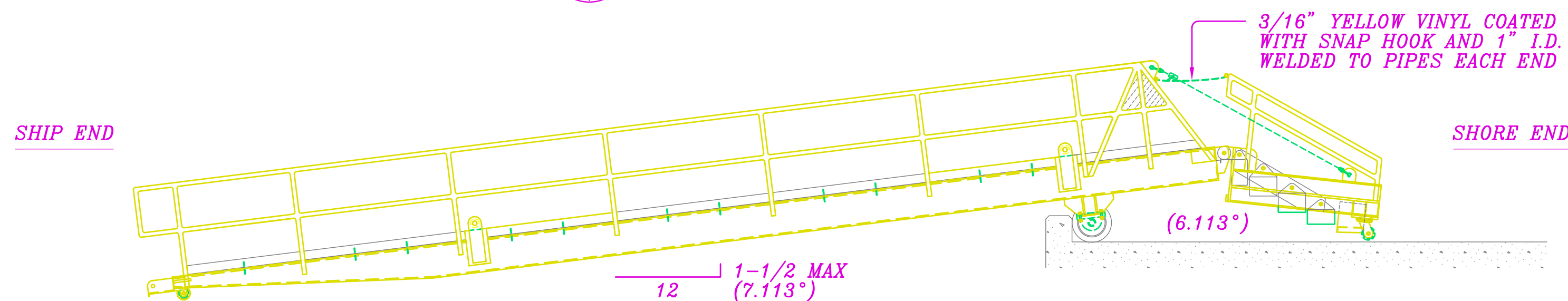
REVISIONS				
ZONE	LTR	DESCRIPTION	DATE	APPROVED



**D** DETAIL  
S3/S3 1-1/2" = 1'-0"



**B** BROW FRAMING PLAN  
S3/S3 1/2" = 1'-0"



**C** ROTATED BROW ELEVATION  
S3/S3 1/4" = 1'-0"

LEGEND: ALUMINUM UNLESS NOTED BY \*

★ MAJOR REVISION FROM PREVIOUS DRAWINGS

① C 15 X 11.71 X 40'-0" EXTERIOR BEAM

② C 15 X 11.71 X 23'-0" INTERIOR BEAM

③ C 15 X 11.71 X 3'-0" END BEAM

④ C 15 X 11.71 X 5'-8" SHORE END STRINGER

⑤ L 3 X 3 X 1/4

⑥ 1-1/2" DIA PIPE POST / HANDRAIL, SEE B/S2

⑦ 2' 11-1/2" X 1/4" CHECKERED FLOOR PLATE

⑧ 1/4" CHECKERED SHIP END FIXED TREAD, SEE B/S4

⑨ 1/4" CHECKERED SHORE END FIXED TREAD, SEE B/S7

\* ⑫ 6" DIA X 5" SHIP END POLYURETHANE FIXED CASTER, SEE A/S2

\* ⑬ 8" DIA X 5" SHORE END POLYURETHANE SWIVEL CASTER, SEE A/S2

⑮ 8" X 1" X 35-3/16" SHIP END CASTER PLATE, SEE B/S4

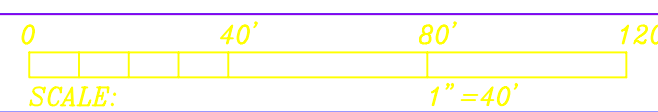
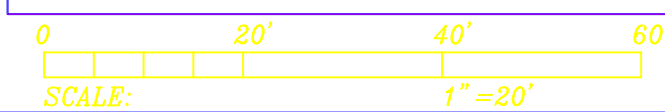
⑯ 17" X 3/8" X 6" SHIP END TREAD PLATE, SEE A/S4

⑰ 1-3/4" X 1/4" X 24" POST STIFFENER PLATE, SEE B/S2

VERIFY COUNTERBALANCE OF BROW PRIOR  
TO WELDING TOP TREAD PLATES

IF SHEET IS LESS THAN 22" X 34" IT IS A REDUCED PRINT. SCALE REDUCED ACCORDINGLY.

STRUCTURAL SHT 3 OF 8		DEPARTMENT OF THE NAVY		NAVAL FACILITIES ENGINEERING COMMAND	
DES	R. CHONG	PUBLIC WORKS CENTER		PEARL HARBOR, HAWAII	
DR	R. CHONG	SUBBASE		PEARL HARBOR, HI	
CHK	SUEHIRO	SUBBASE WHARVES		40' X 3' BEAM BROW	
DPPE	ORLOWSKI	FRAMING PLAN AND ELEVATION		7498189	
INIT DR MGR		SIZE		CODE IDENT NO	
DIV DIR		D		80091	
		SCALE: AS NOTED		CONSTR CONTR NO	
		PLOT SCALE:		PWC SHOP	
		DATE		SPEC	
		BY DIRECTION OF COMMANDING OFFICER		PWC SHOP	
		DATE		SHEET	
		DATE		3 OF 8	



WJ NO 90519 JUN 141-6312 / 02