

REQUIREMENTS FOR THE DISCHARGE OF GROUNDWATER AND STORMWATER IN EXCAVATIONS

During its movement through subsurface soil, groundwater may collect pollutants from Installation Restoration (IR) sites. Groundwater and/or stormwater that has accumulated in excavations within IR sites may contain pollutants identified at these sites. Perform dewatering at excavation sites as required in figures 2 through 3. Figure 1 is the map of the IR sites.

Figure 1

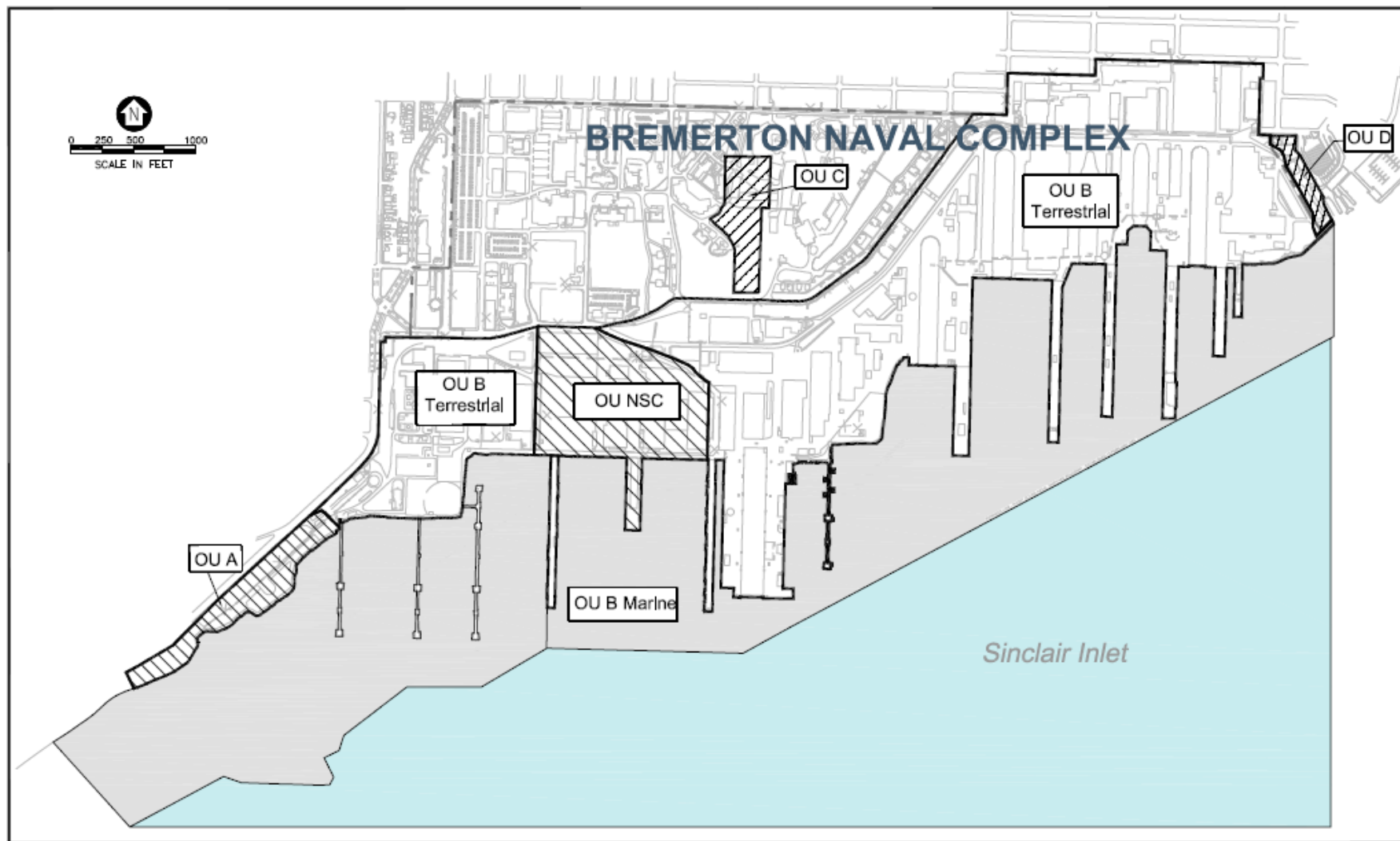
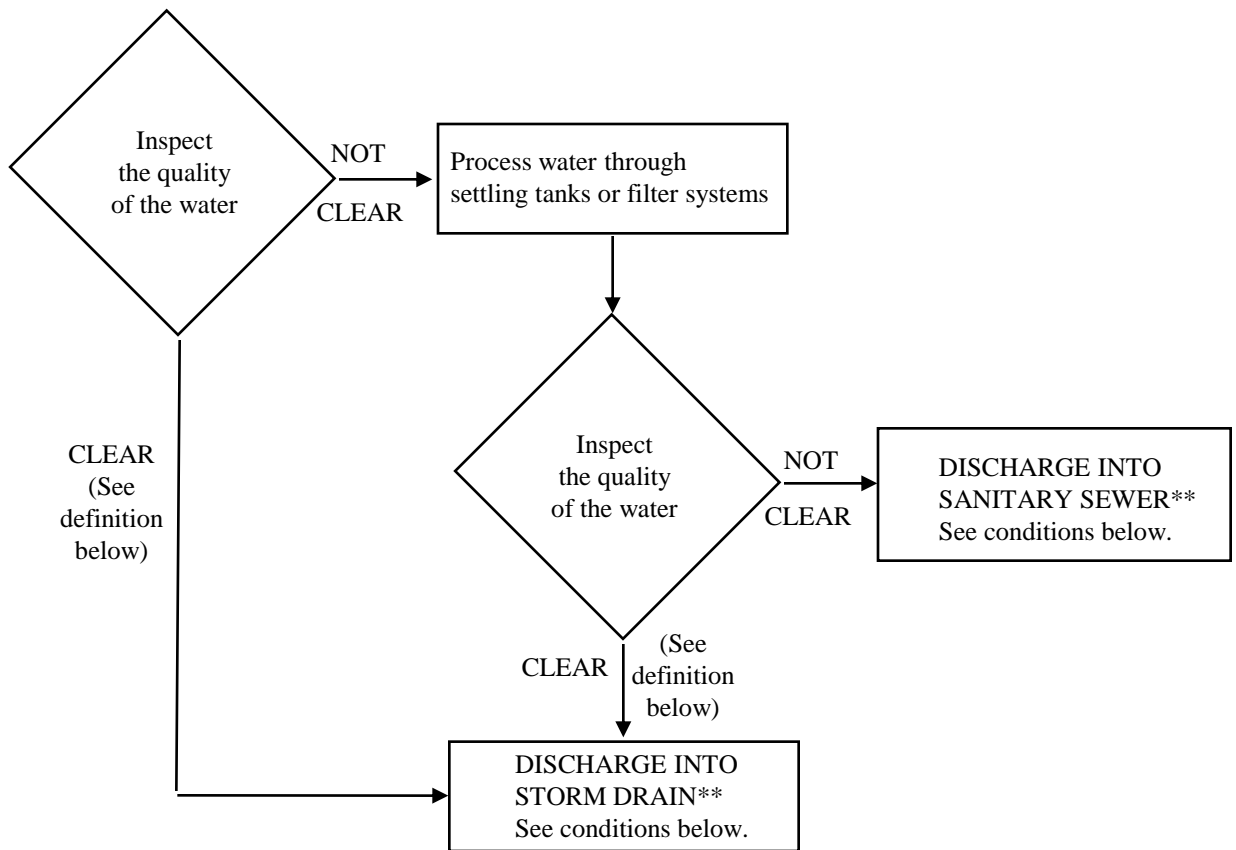


Figure 2
Groundwater and/or Stormwater in:
UTILITY VAULTS AND EXCAVATIONS (IN THE TIZ* OR
OUTSIDE IR SITES) (Rev. 03-11)



*The **Tidal Influence Zone (TIZ)** is the area from the quay to 40 feet inland. The TIZ is the area where the predominant water found in excavations will be tidal, rather than groundwater. The boundary of the TIZ is independent of IR sites.

**A WIS is not required. Submit Storm Drain /Sanitary Sewer Discharge Approval form (PSNS&IMF 5090/110) to Code 106.32 for approval.

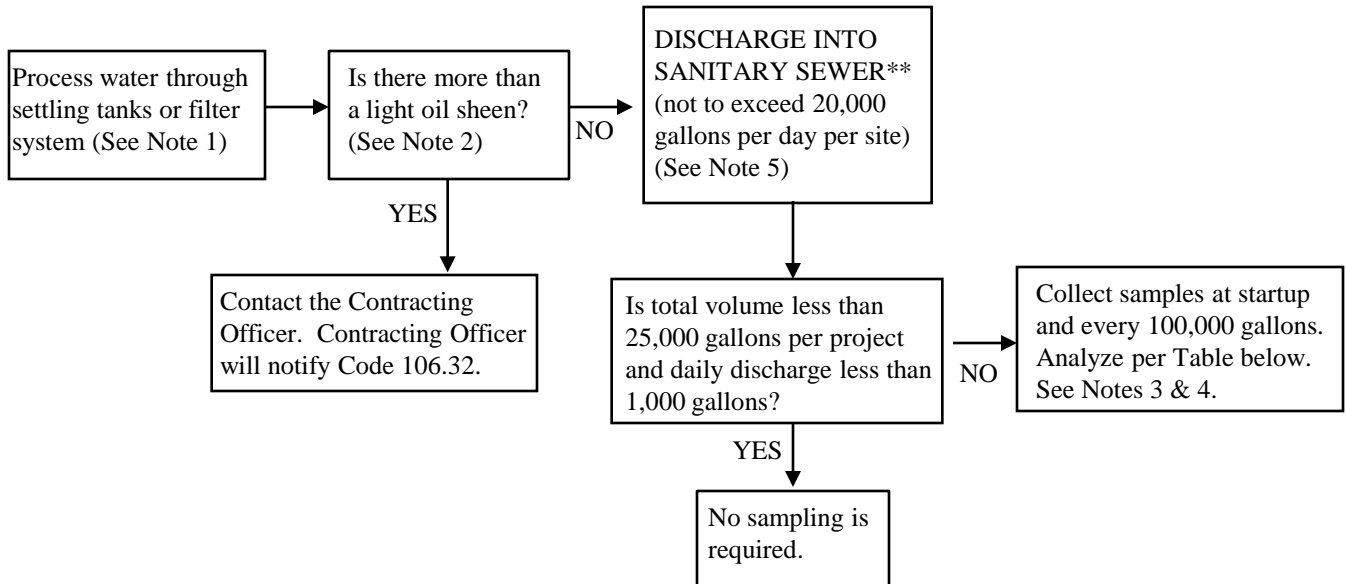
Conditions for Discharge into Storm Drain:

- _ The water has to meet the “**clear**” qualification. The water is “**clear**” if it doesn’t have any discernable color, odor, floating solids, suspended solids, settled solids, foam, oil sheen, or other obvious indicators of pollution.
- _ Contact the Contracting Officer prior to discharge, to help avoid work delays due to outside (i.e., hotline calls) concerns. The Contracting Officer will notify Code 106.32 at 476-4738 immediately.
- _ Provide total daily flow and date of the discharge to the Contracting Officer for forwarding to Code 106.32.

Conditions for Discharge into the Sanitary Sewer:

- _ Notify Contracting Officer 7 days in advance for discharges greater than 1,000 gals/day or >1,000 gallons for the entire project. Discharge only after receiving approval from Government.
- _ The water shall be processed through a settling tank or filter system to remove sediment.
- _ The water shall not have more than a light oil sheen and shall be free of floating solids and excessive foam. (A light oil sheen is one that can be broken up when disturbed.)
- _ If the above conditions are met, discharge the water to the sanitary sewer. Provide total daily flow and date of the discharge to the Contracting Officer for forwarding to Code 106.32.
- _ If the above conditions are not met, contact the Contracting Officer so they can notify Code 106.32 at 476-0122 for directions.

Figure 3
Groundwater and/or Stormwater in:
EXCAVATIONS AT IR SITES OU A, OU B, OU C, OU NSC
(OUTSIDE THE TIZ*) (Rev. 03-11)



Analysis Required		
OU A, OU NSC	OU B	OU C
_ Total Arsenic, Lead, Nickel, Chromium, Copper, Zinc (EPA 200.7) _ Total Mercury (SW-846/7470A) _ Volatiles (EPA 624) _ PCB (SW-846/8082)	_ Total Arsenic, Lead, Nickel, Chromium, Copper, Zinc (EPA 200.7) _ Total Mercury (SW-846/7470A) _ Volatiles (EPA 624)	_ Volatiles (EPA 624) _ TPH (EPA 1664A)

NOTE:

1. Notify the Contracting Officer for Code 106.32's review of the settling tanks or filter system.
2. A light oil sheen is defined as an oil sheen that can be broken up when disturbed.
3. Submit the first set of analysis reports to the Contracting Officer for forwarding to Code 106.32 (476-0122) within two weeks from the time of sampling.
4. Provide subsequent analysis reports, total daily flow, and date of the discharge to the Contracting Officer for forwarding to Code 106.32 on a weekly basis.
5. If there is a need to discharge more than this volume, contact the Contracting Officer. The Contracting Officer will notify code 106.32 at 476-0122.

*The **Tidal Influence Zone (TIZ)** is the area from the quay to 40 feet inland. See Figure 2 for disposition requirements in the TIZ.

**A WIS is not required. Submit Storm Drain/ Sanitary Sewer Discharge Approval form (PSNS&IMF 5090/110) to Code 106.32 for approval.