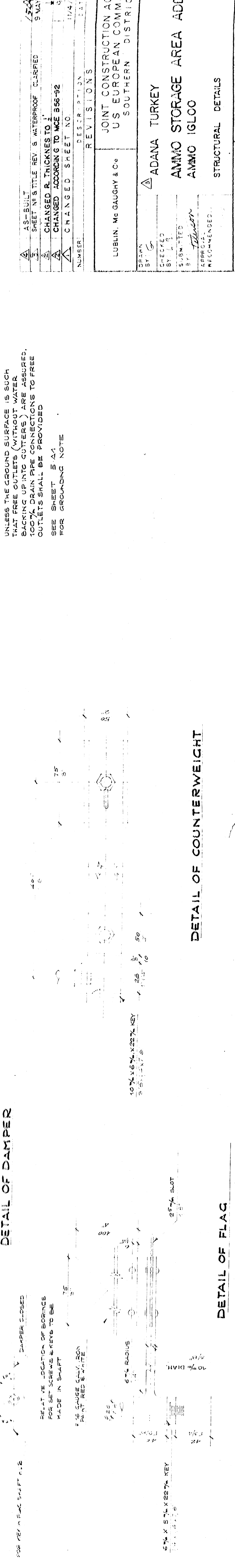
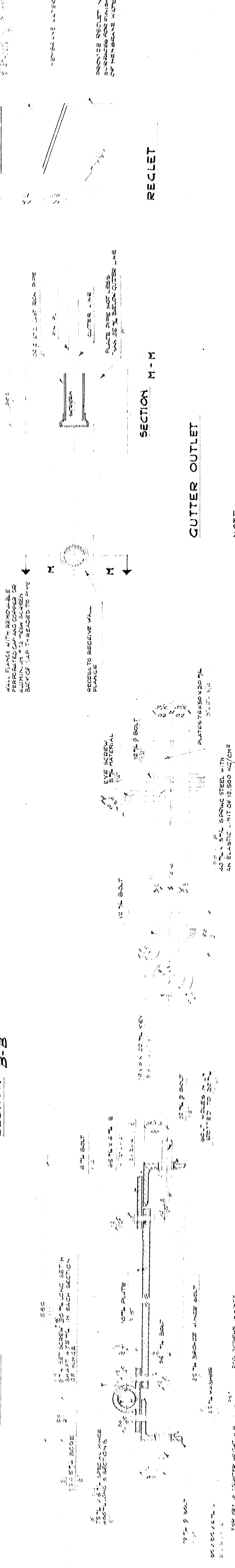
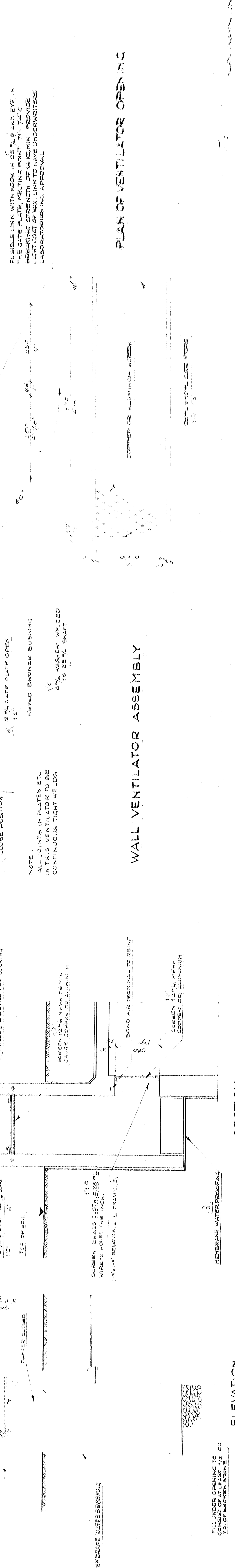
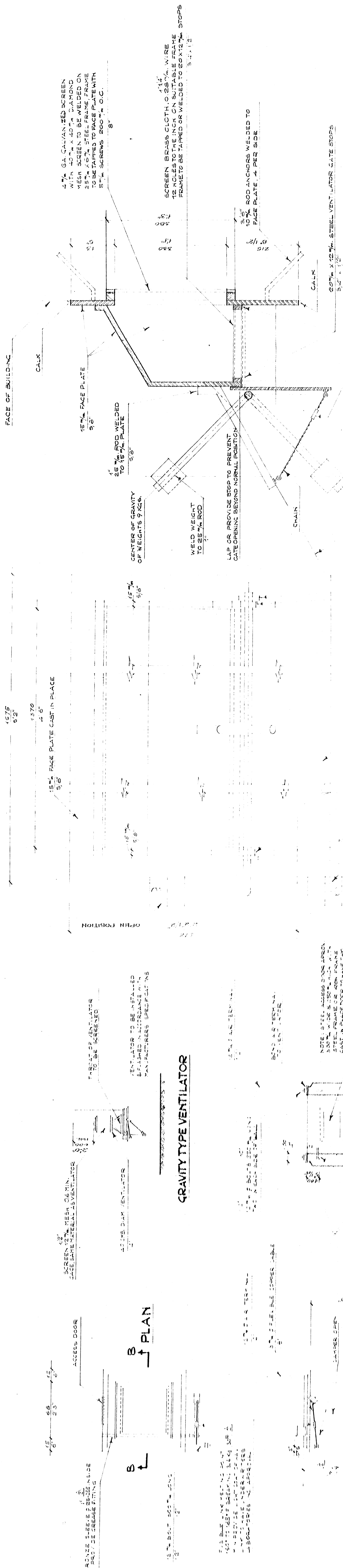
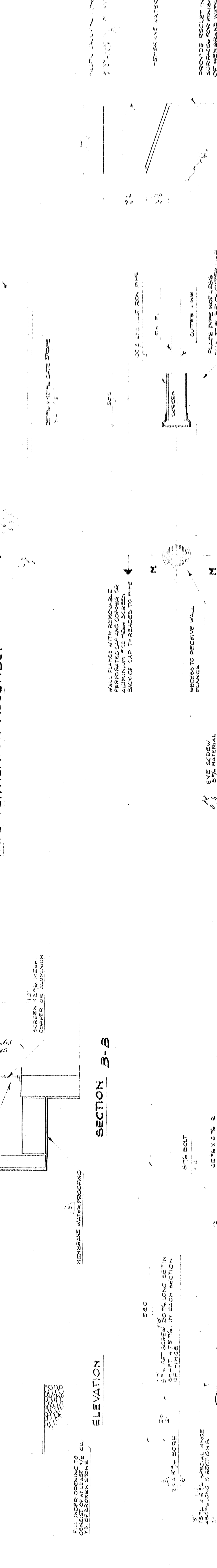


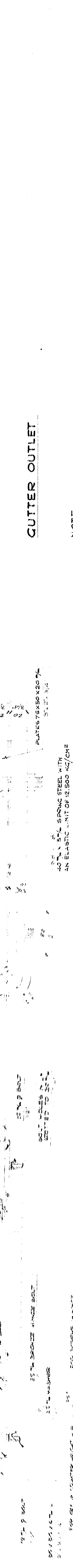
DETAILS OF VENTILATOR STACK



PLAN OF VENTILATOR OPENING



RECKET



NOTE:
UNLESS THE GROUND SURFACE IS SUCH THAT FREE OUTLETS (WITHOUT WATER BACKING UP INTO CUTTERS) ARE ASSURED, 100% DRAIN PIPE CONNECTIONS TO FREE OUTLETS SHALL BE PROVIDED.
SEE SHEET S-41 FOR GRADING NOTE.

REVISIONS	
NUMBER	DESCRIPTION
1	AS-BUILT
2	SHEET TITLE REV. B WATERPROOF CLASPED 5 MAY 57
3	CHANGED R. THICKNESS TO 1/4\"/>
4	CHANGED ACCORDING TO MCE B96-92
5	CHANGED SHEET NO. 11/4/57

APPROVED	DESIGNED	DRAWN	CHECKED
<i>William</i>			
DATE: 28 MAR 57	STATION NUMBER	SHEET	33-31(CASE) 01
	VD-42	4 S 3	5

AS BUILT

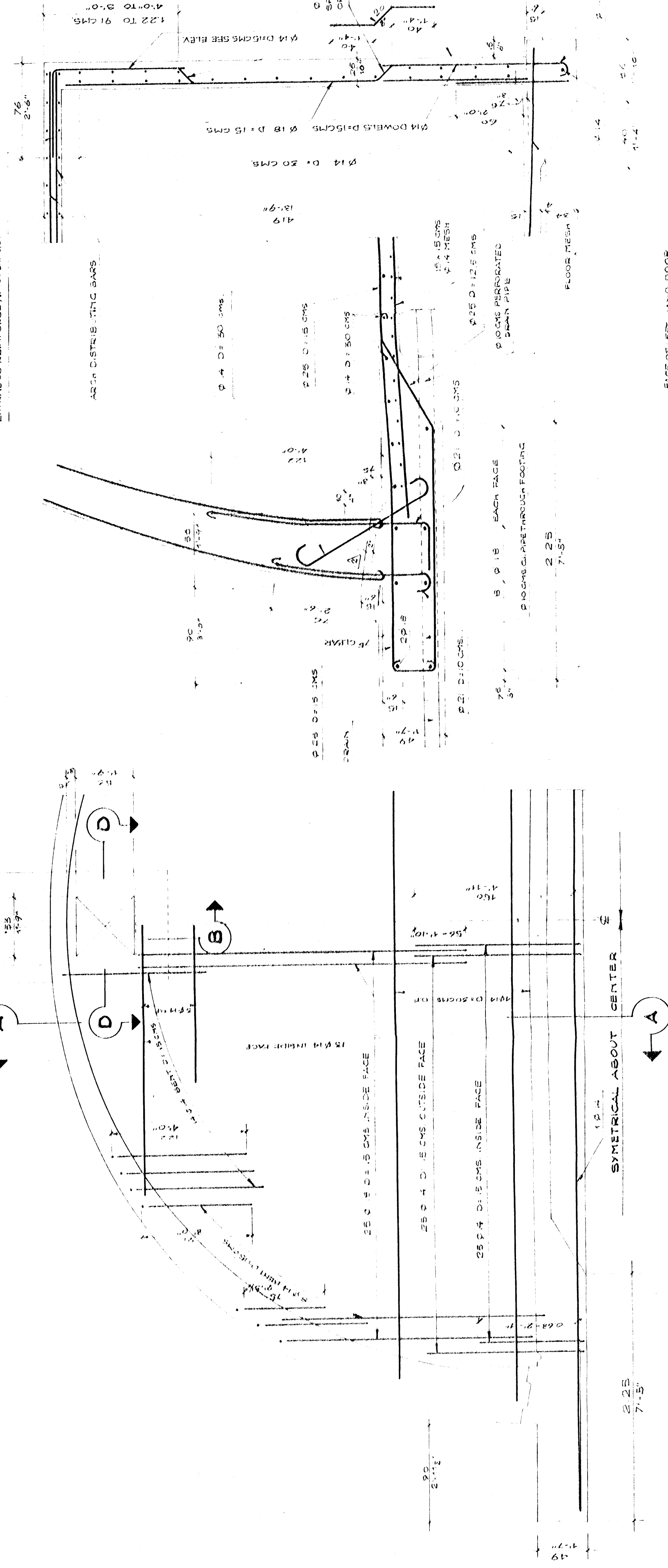
DETAIL OF COUNTERWEIGHT

DETAIL OF FLAG

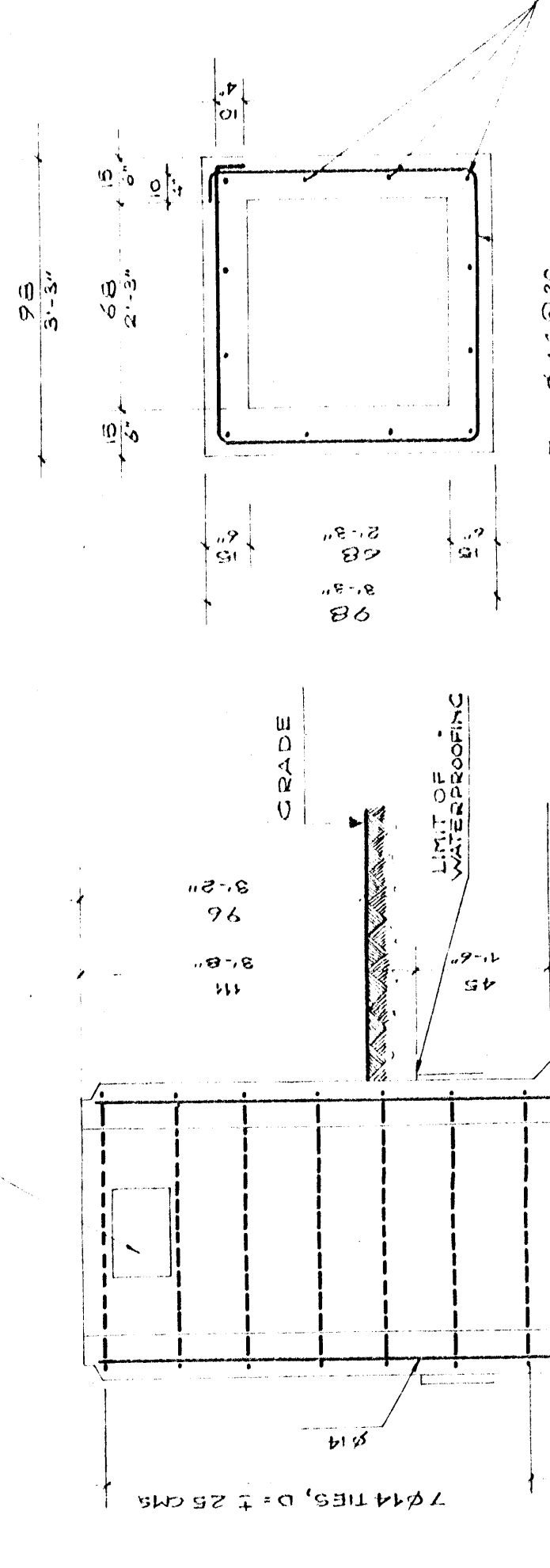
NOTE: WATERPROOFING ON THE EXTERIOR SURFACE OF THE MAZINE OF 5 PLY WATERPROOF MEMBRANE PROTECTED BY 2 CM PARBITOL SHALL EXTEND ACROSS THE TOP OF THE FOOTING AND BE FINISHED AT ABOUT THE MIDPOINT OF THE VERTICAL FACE OF THE FOOTING.

FOR VENTILATOR DETAILS SEE SHEET N. 25

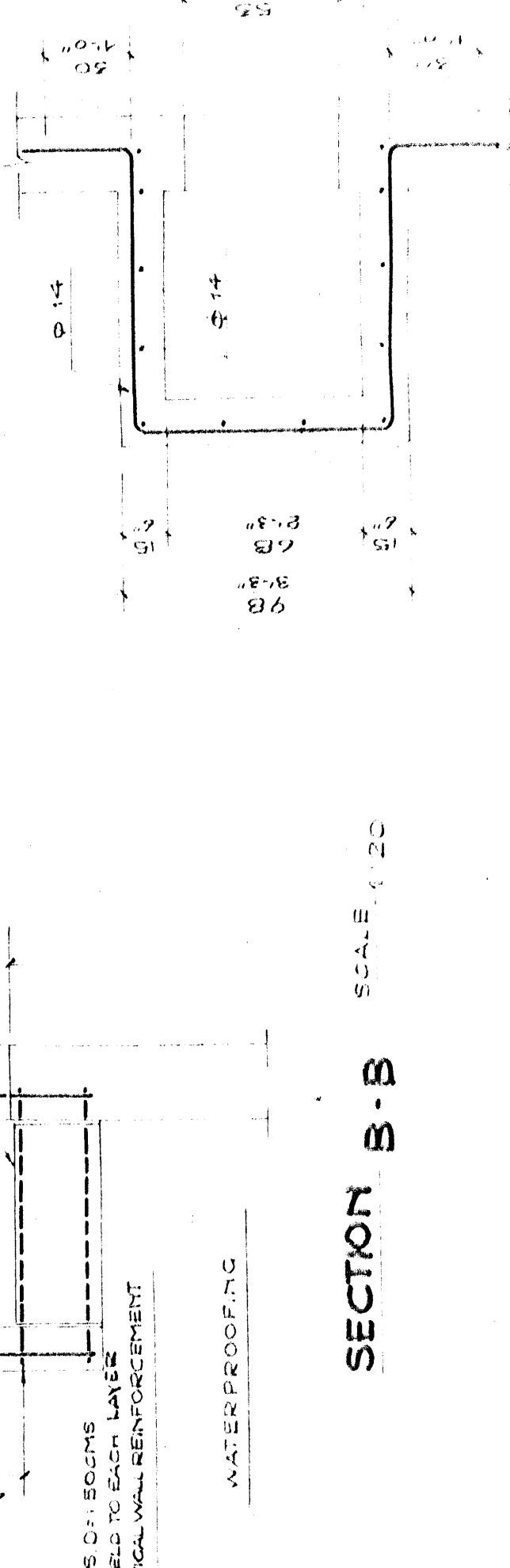
SECTION A-A SCALE 1:25



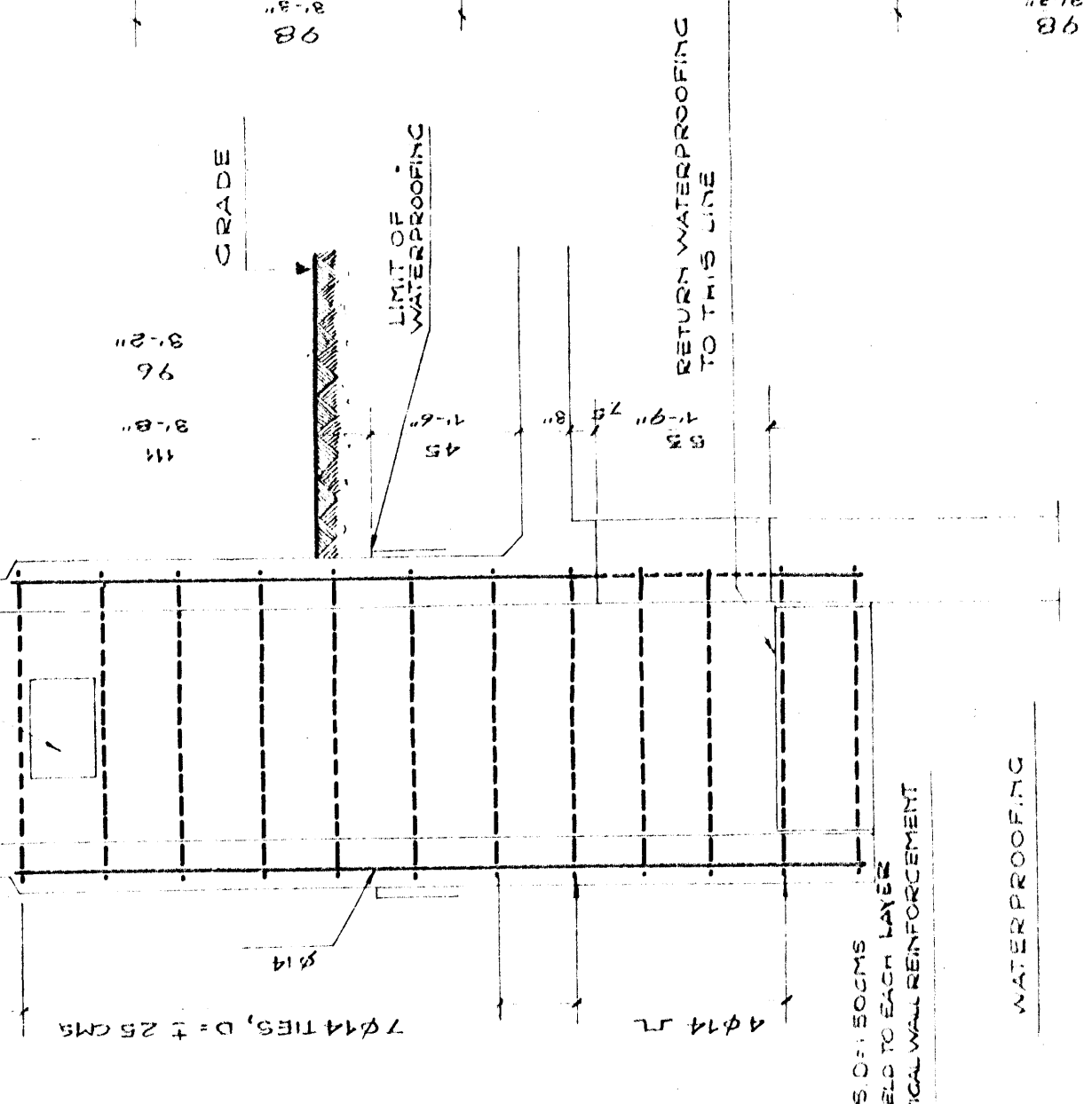
SECTION C-C SCALE 1:20



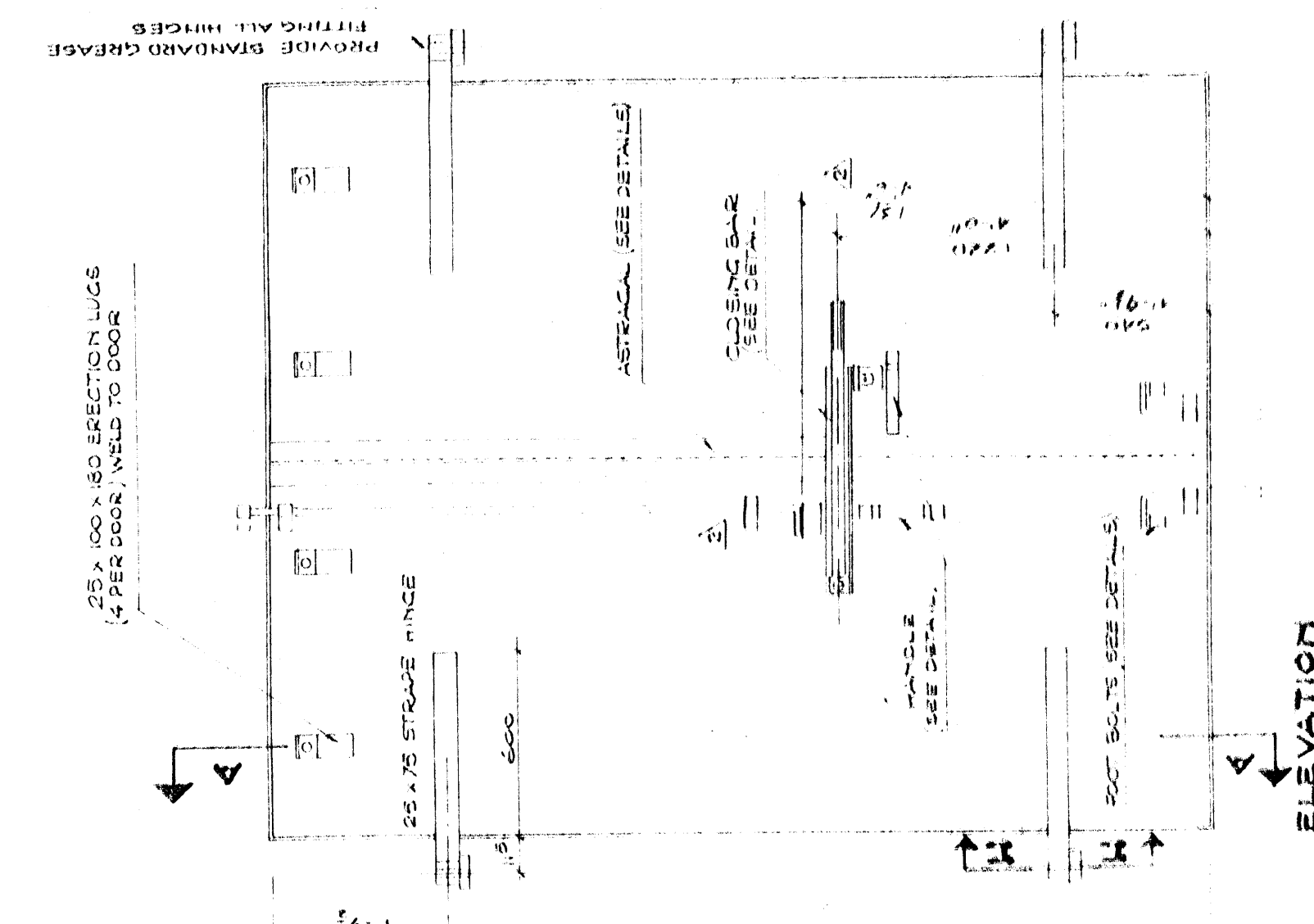
SECTION D-D SCALE 1:20



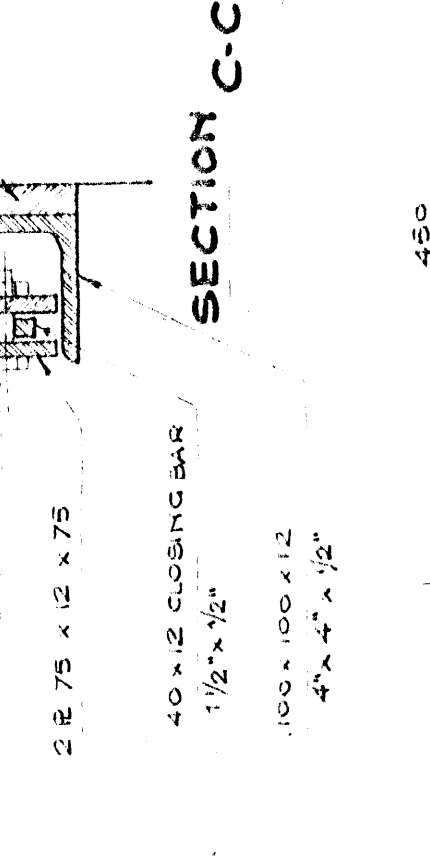
SECTION B-B SCALE 1:20



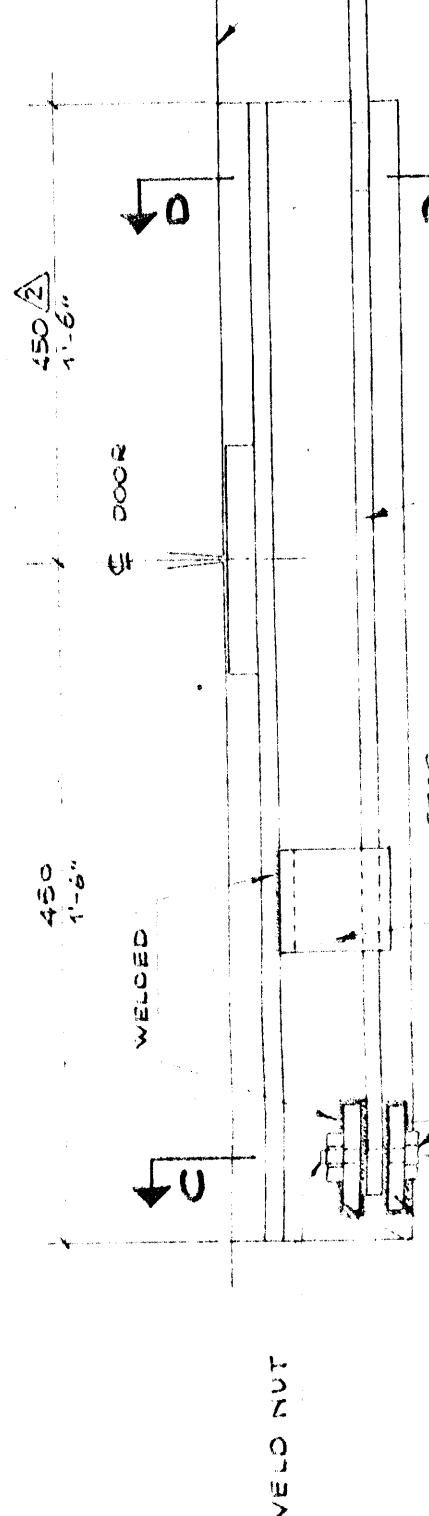
ELEVATION REAR WALL SCALE 1:25



SECTION C-C



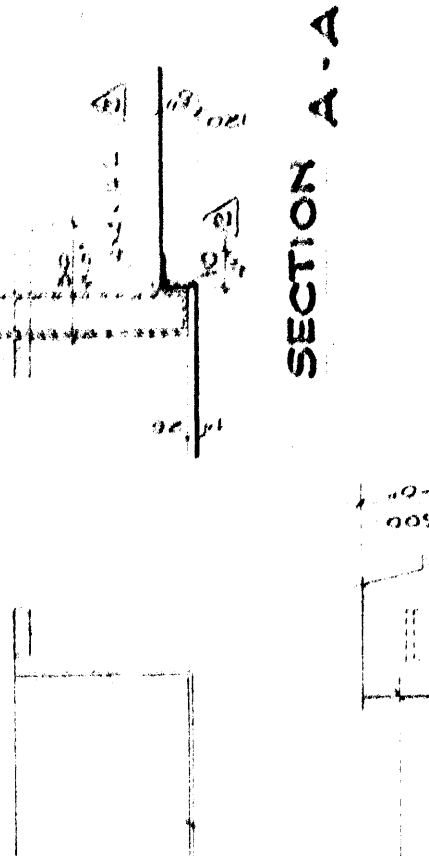
SECTION D-D



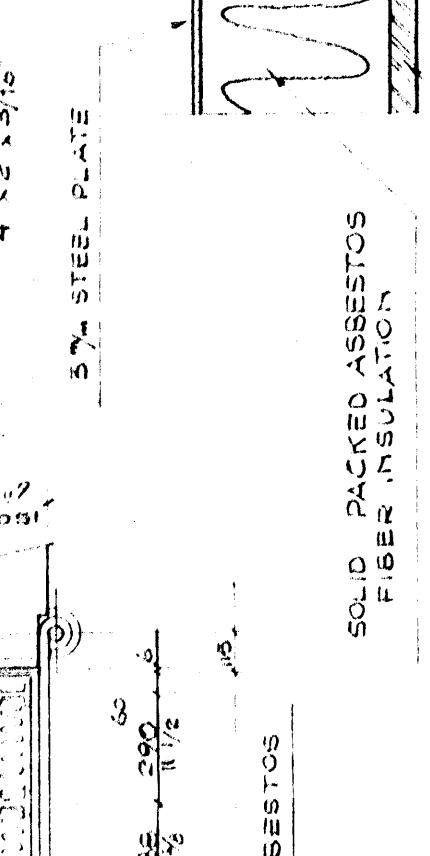
SECTION H-H



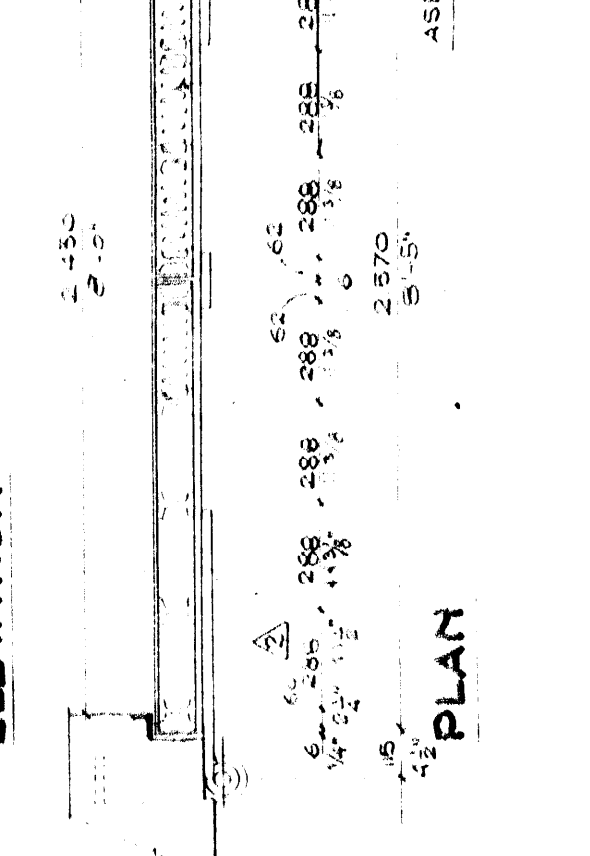
SECTION A-A



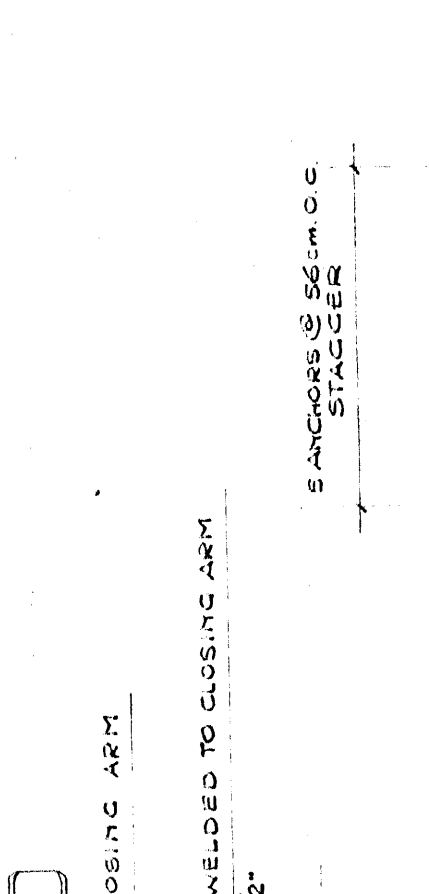
SECTION A-A



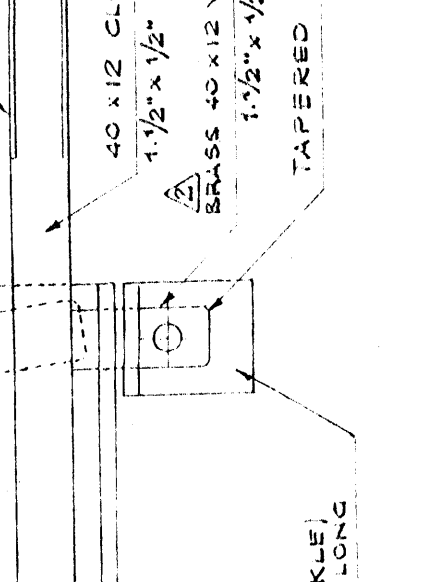
PLAN



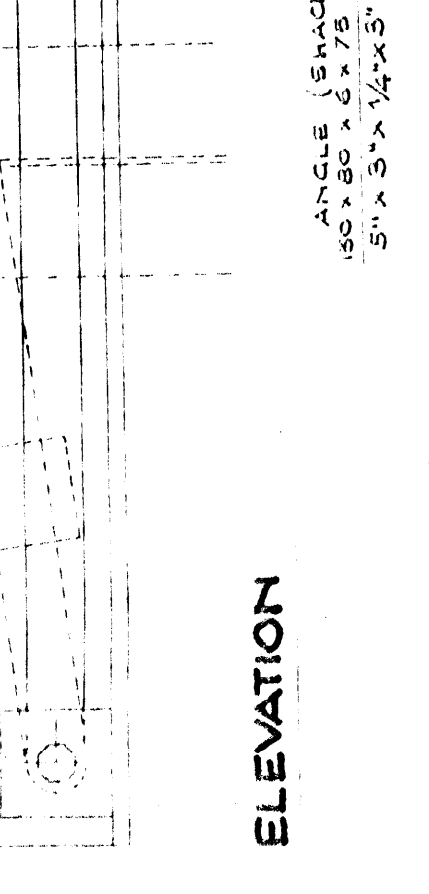
FOOT BOLT DETAILS SCALE 1:5



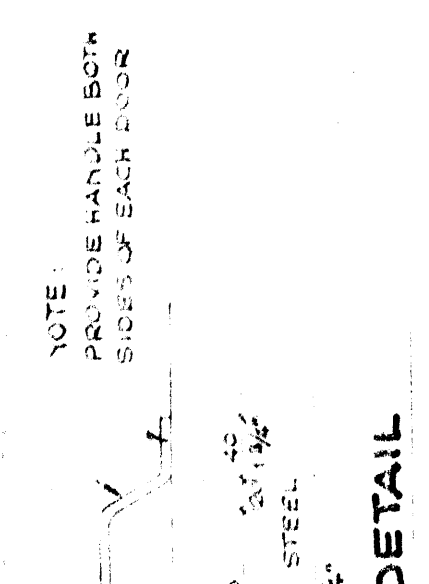
HEAD BOLT DETAILS SCALE 1:5



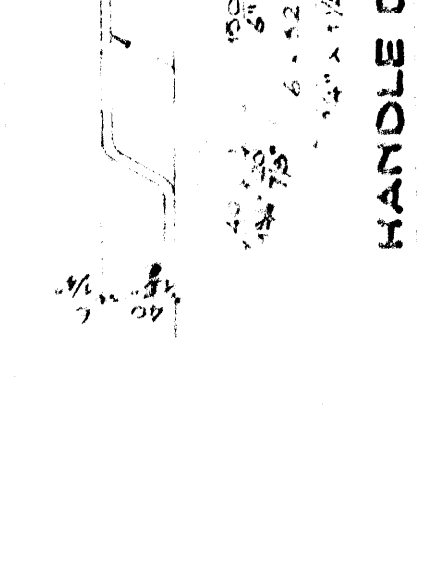
STEEL DOOR DETAILS SCALE 1:5



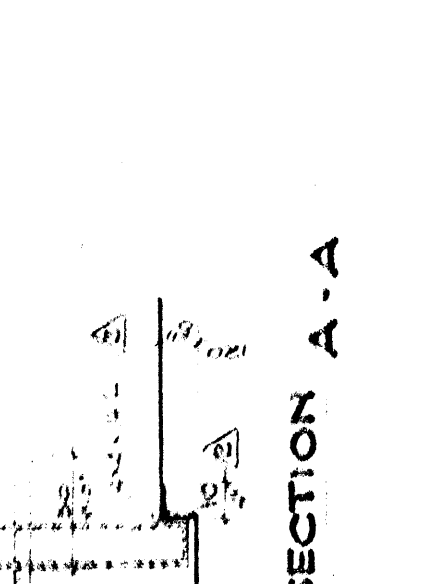
CLOSING BAR DETAILS SCALE 1:5



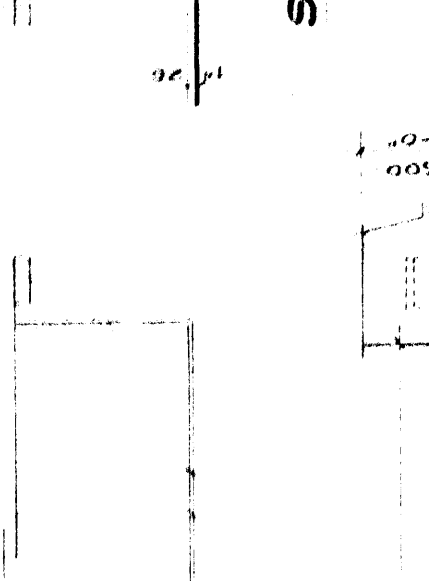
STRAP ANCHOR SECTION H-H



DOOR FRAME SCALE 1:50



AS BUILT



AS-BUILT	REVISIONS	DATE
SHEET NO. REV. 5	DESCRIPTION	DATE
CHANGE DIMENSION TOP BOLT DETAIL		
ACCORDING TO A/COM. 54-24		
CHANGED SHEET NO.		
NUMBER	DESCRIPTION	DATE
1		
2		
3		
4		
5		

LUBLIN, Mc GAUGHY & Co
 JOINT CONSTRUCTION AGENCY
 US EUROPEAN COMMAND
 SOUTHERN DISTRICT

ADANA TURKEY
 AMMO STORAGE AREA ADDITION
 AMMO IGLOO

STRUCTURAL DETAILS

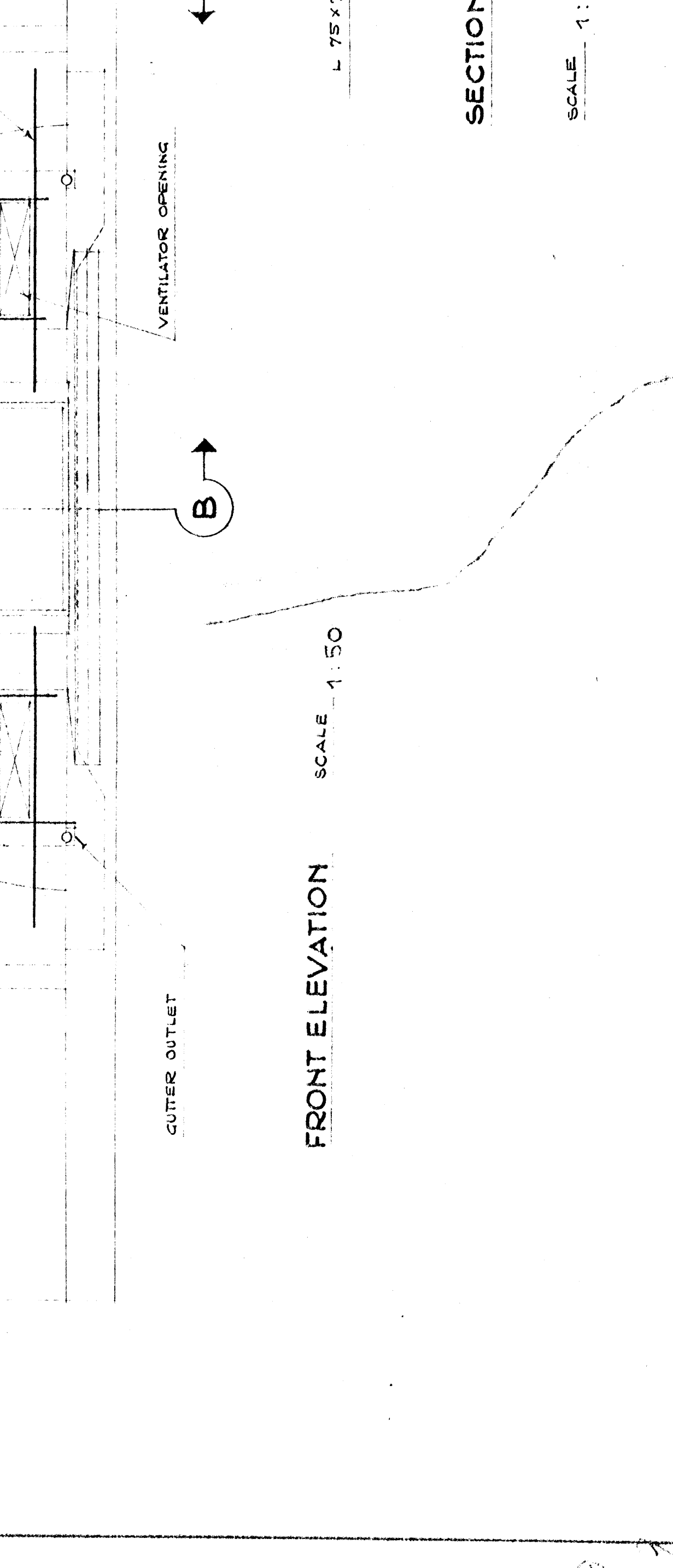
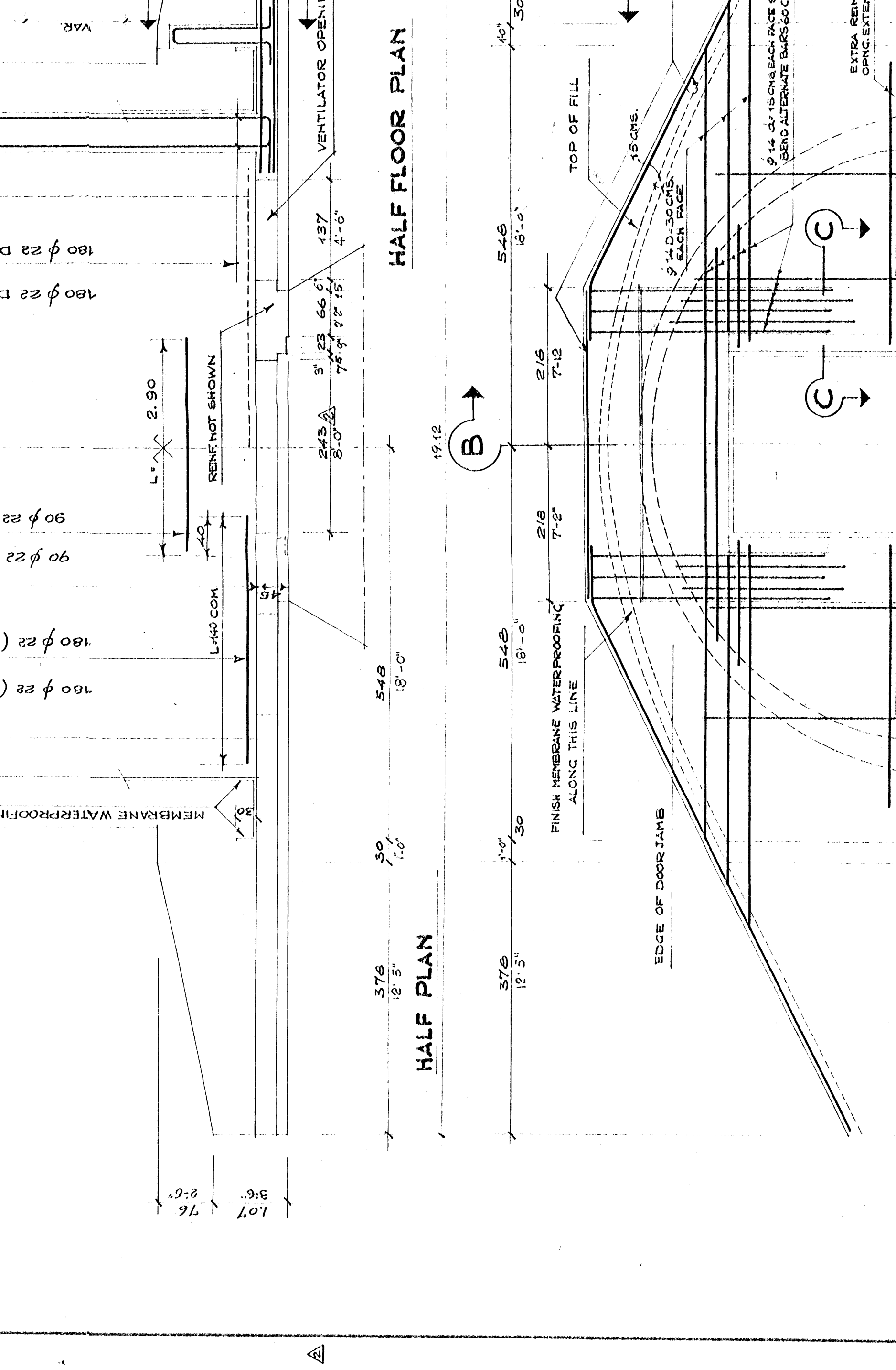
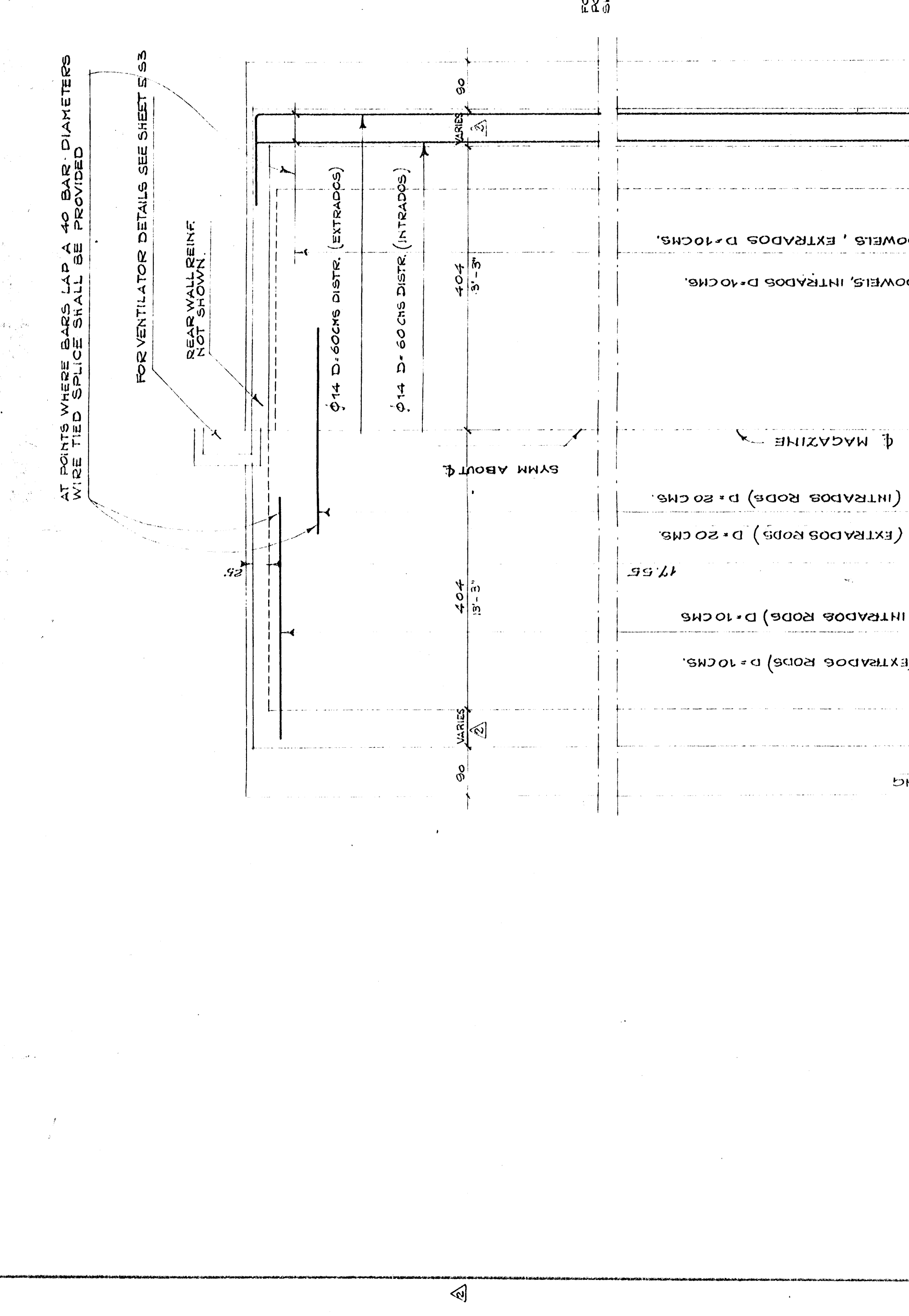
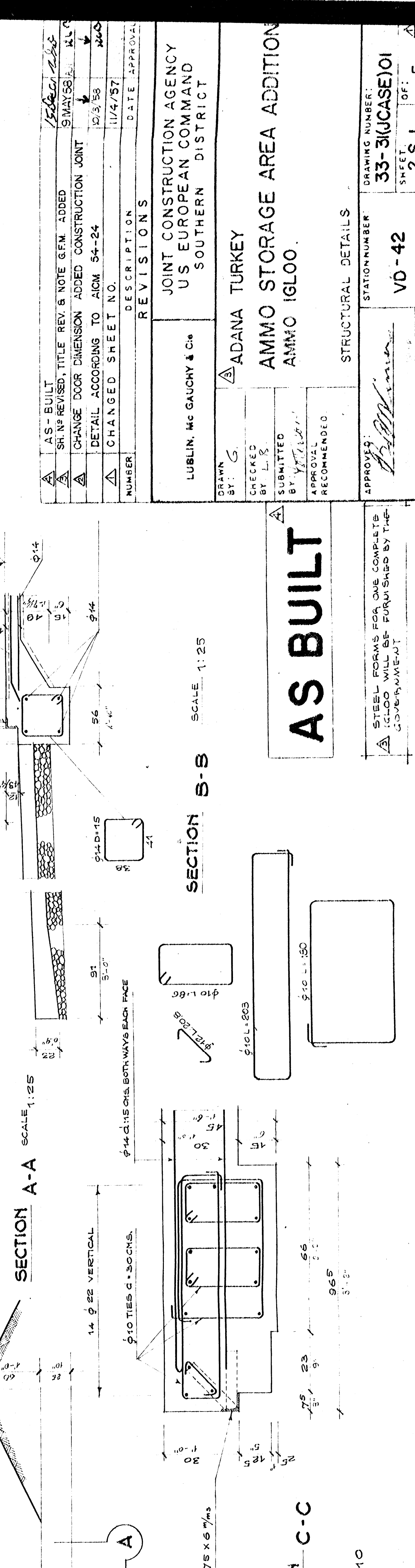
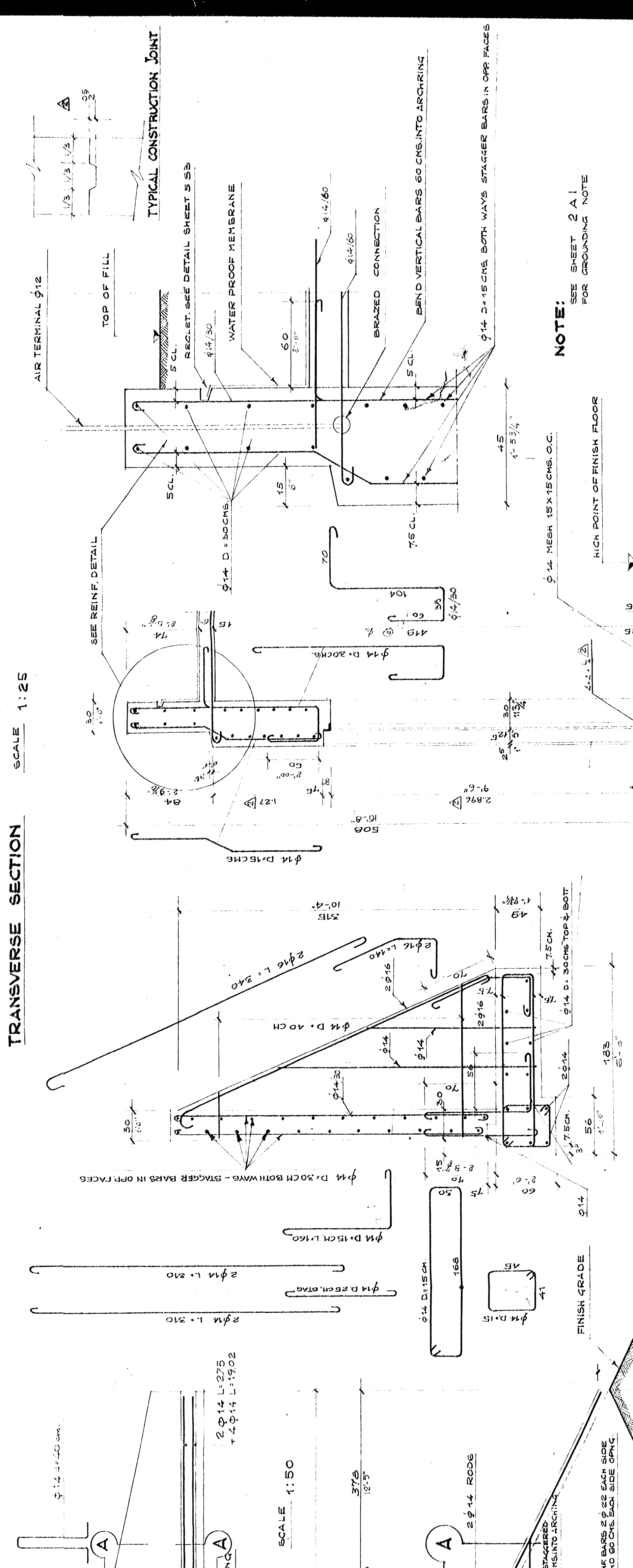
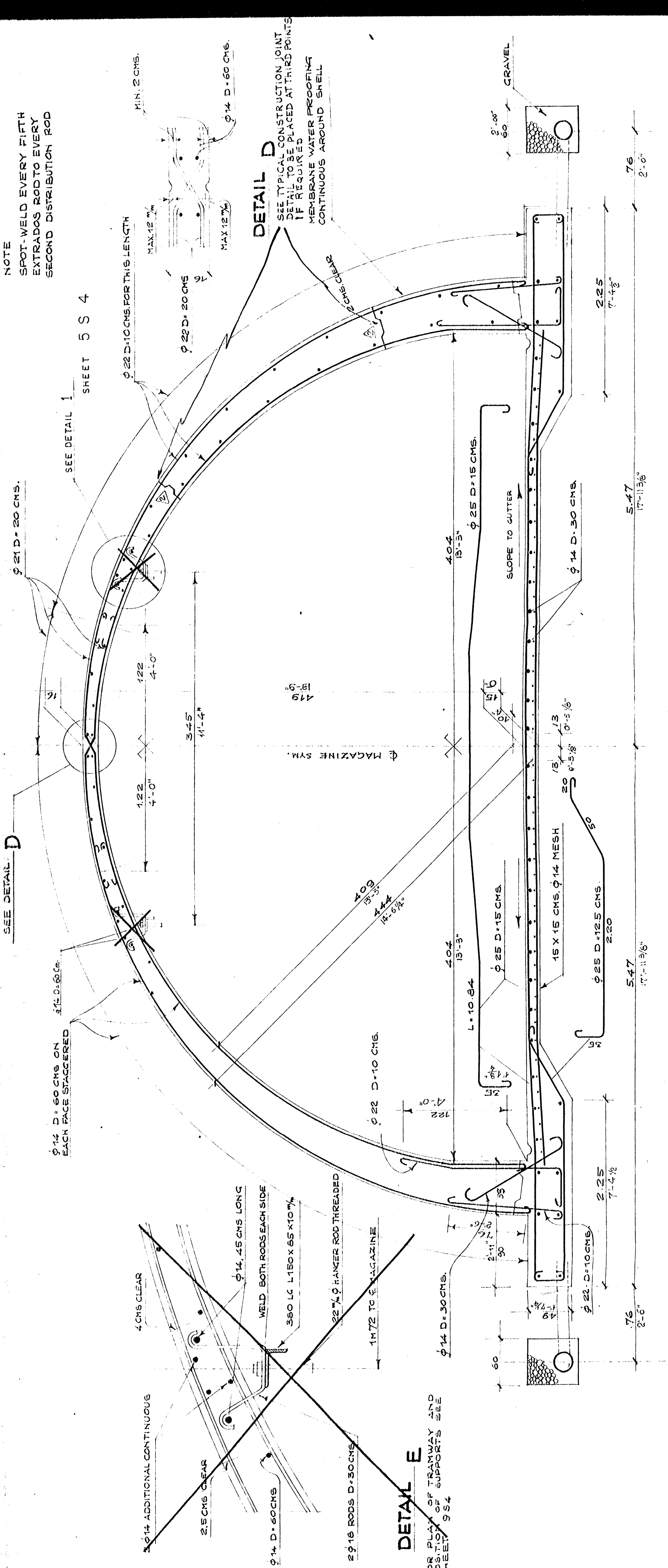
STATION NUMBER
 VD-42

DRAWING NUMBER
 33-31 (CASE) 01

DATE
 28 MAR 57

APPROVED
 [Signature]

APPROVED
 [Signature]



NUMBER	DESCRIPTION	DATE	APPROVAL
1	AS-BUILT	11/4/57	
2	SHAP REVISION TITLE REV 8 NOTE 6 FN ADDED	9/MAY/58	
3	CHANGE DOOR DIMENSION ADDED CONSTRUCTION JOINT	10/3/58	
4	DETAIL ACCORDING TO A/CN 54-24	11/4/57	
5	CHANGED SHEET NO.		

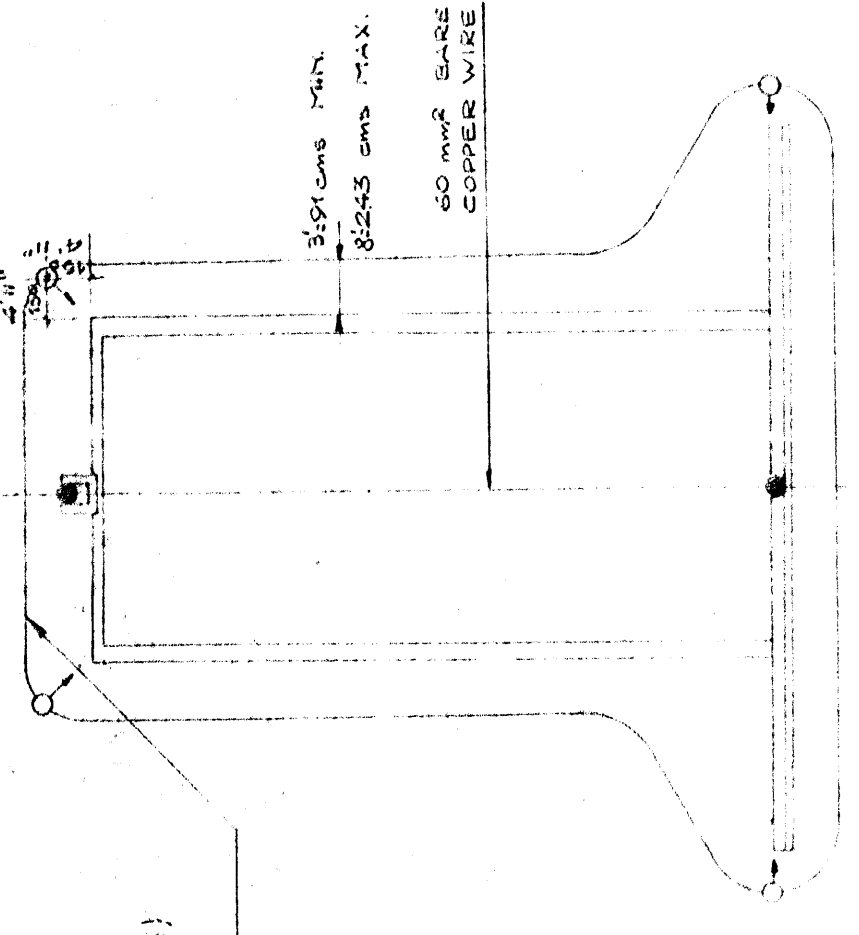
JOINT CONSTRUCTION AGENCY
 US EUROPEAN COMMAND
 SOUTHERN DISTRICT
 LUBLIN, MO GAUCHY & Co
 ADANA TURKEY
 AMMO STORAGE AREA ADDITION
 AMMO IGL00

AS BUILT
 STEEL FORMS FOR ONE COMPLETE IGL00 WILL BE FURNISHED BY THE GOVERNMENT

DRAWN BY: G
 CHECKED BY: L.S.
 SUBMITTED BY: Y. Y. Y.
 RECOMMENDED
 APPROVED: [Signature]
 STATION NUMBER: V0-42
 DRAWING NUMBER: 33-3(CASE)01
 SHEET: 2 S 1 OF 5
 DATE: 28 MAR 57

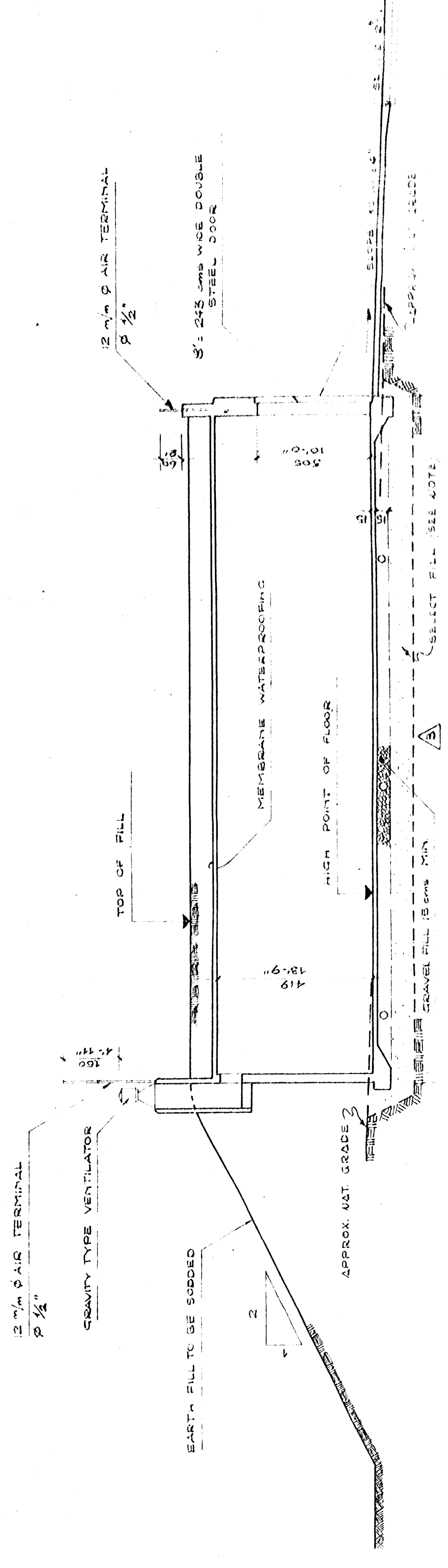
STRUCTURAL DETAILS
 SCALE: 1:25
 SECTION B-B
 SCALE: 1:25
 SECTION A-A SCALE: 1:25
 SECTION C-C SCALE: 1:10

LEGEND
 ● AIR TERMINAL (LIGHTNING ROD)
 ○ GROUND CONNECTION (BAND) TO REINFORCING STEEL



GROUNDING SYSTEM FOR LIGHTNING PROTECTION

COUNTERSINK (60 mm BARE COPPER)
 2.25 mm BEYOND FLOOR LEVEL



LONGITUDINAL SECTION SCALE 1:100

GENERAL NOTES

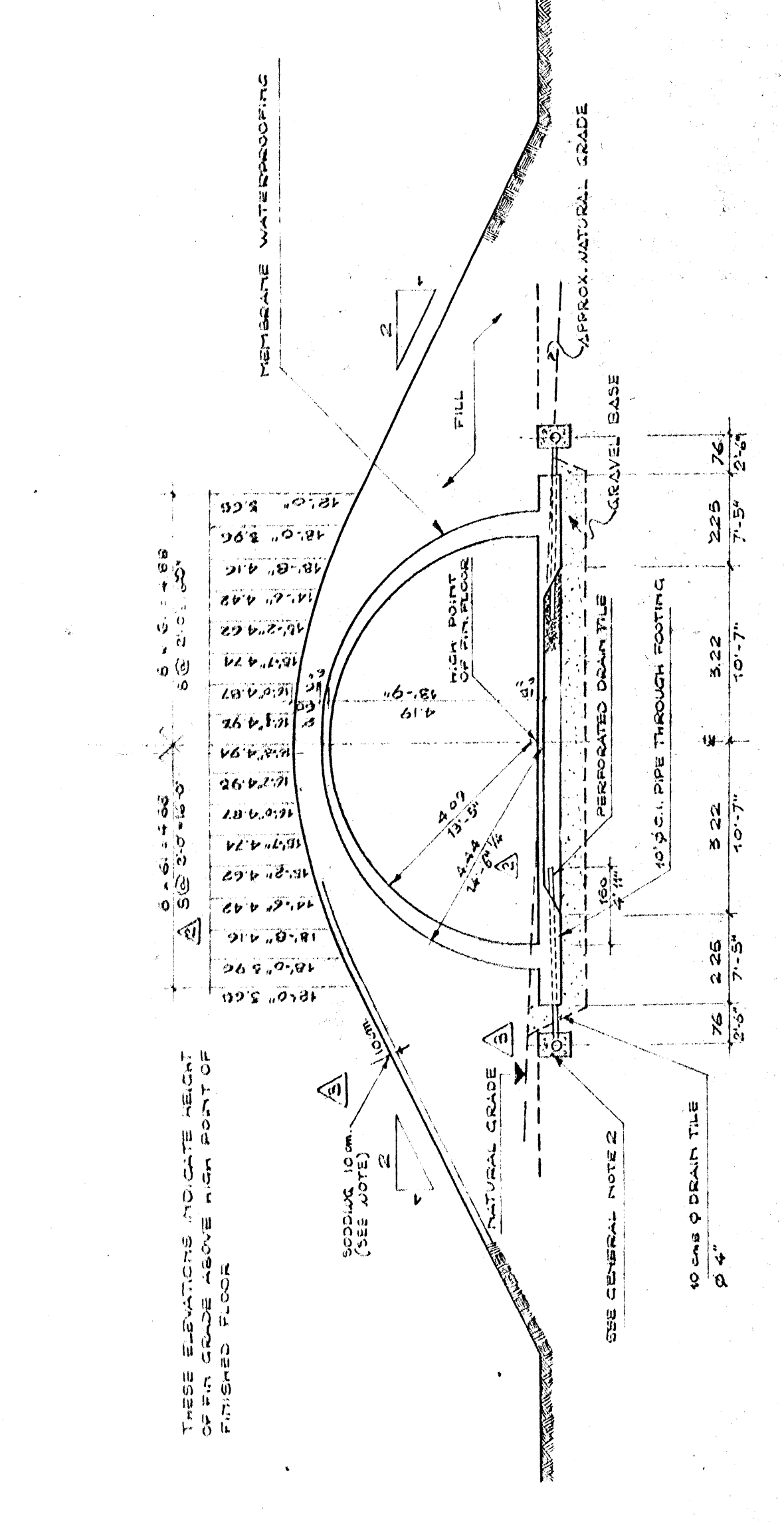
- 1) ENDS OF RAILS AND PLATFORM TRAVELLED SECTION TOPS OF WALL AND ENTRANCE (ROOFED) SPOTS. ALL OTHER SPOTS SHALL BE COVERED AND PROTECTED BY A 100% COVERING OF COPPER OR ALUMINUM. PROPER PLACING AND SPACING OF CONCRETE SHALL BE MAINTAINED THROUGHOUT THE ENTIRE CONSTRUCTION. ALL FIVE OR SIX PROJECTIONS SHALL BE CAREFULLY REMOVED. ALL SPOTS SHALL BE COVERED BY A 100% COVERING OF COPPER OR ALUMINUM. ALL SPOTS SHALL BE COVERED BY A 100% COVERING OF COPPER OR ALUMINUM.
- 2) 100 mm BEAM TILE UNDER THE MAGAZINE SHALL BE LAID IN A GRAVEL FILLED TRENCH UNDER THE GRAVEL BASE FOR THE FLOOR. CAST IRON SOIL VALVES SHALL BE USED FOR THE CONNECTION OF THE DRAINAGE SYSTEM TO THE MAIN DRAINAGE SYSTEM. THE CONNECTION SHALL BE MADE WITH A 100% COVERING OF COPPER OR ALUMINUM. THE CONNECTION SHALL BE MADE WITH A 100% COVERING OF COPPER OR ALUMINUM.
- 3) EXCAVATION UNDER 1000 STRUCTURES SHALL BE CARRIED TO A LEVEL OF 600 mm BELOW THE FINISHED FLOOR LEVEL. ALL EXCAVATION SHALL BE COVERED WITH A 100% COVERING OF COPPER OR ALUMINUM. ALL EXCAVATION SHALL BE COVERED WITH A 100% COVERING OF COPPER OR ALUMINUM.
- 4) EARTH COVER FOR ASBESTOS SHALL BE PLACED IN SUCH A MANNER THAT IT SHALL BE PROTECTED BY A 100% COVERING OF COPPER OR ALUMINUM. ALL EARTH COVER SHALL BE PROTECTED BY A 100% COVERING OF COPPER OR ALUMINUM. ALL EARTH COVER SHALL BE PROTECTED BY A 100% COVERING OF COPPER OR ALUMINUM.
- 5) SLOPE OF MOUNTED MATERIAL SHALL BE 1:2 OR AS DIRECTED BY THE CONTRACTING OFFICER.

GROUNDING NOTES

- 1) CONNECTIONS TO EXISTING STEEL STRUCTURES SHALL BE MADE BY BOLTING TOGETHER THE STEEL TO BE GROUNDING TO THE EXISTING STEEL STRUCTURE. THE CONNECTION SHALL BE MADE BY BOLTING TOGETHER THE STEEL TO BE GROUNDING TO THE EXISTING STEEL STRUCTURE. THE CONNECTION SHALL BE MADE BY BOLTING TOGETHER THE STEEL TO BE GROUNDING TO THE EXISTING STEEL STRUCTURE.
- 2) ALL REINFORCING STEEL SHALL BE BONDED TOGETHER TO FORM A CONTINUOUS CONDUCTIVE GRID. REINFORCING STEEL SHALL BE BONDED TOGETHER TO FORM A CONTINUOUS CONDUCTIVE GRID. REINFORCING STEEL SHALL BE BONDED TOGETHER TO FORM A CONTINUOUS CONDUCTIVE GRID.

AUTHORIZED (NET USABLE) AREA 1600 SQ FT. EACH
 ACTUAL (NET USABLE) AREA 1526 SQ FT. EACH

PLAN SCALE 1:100

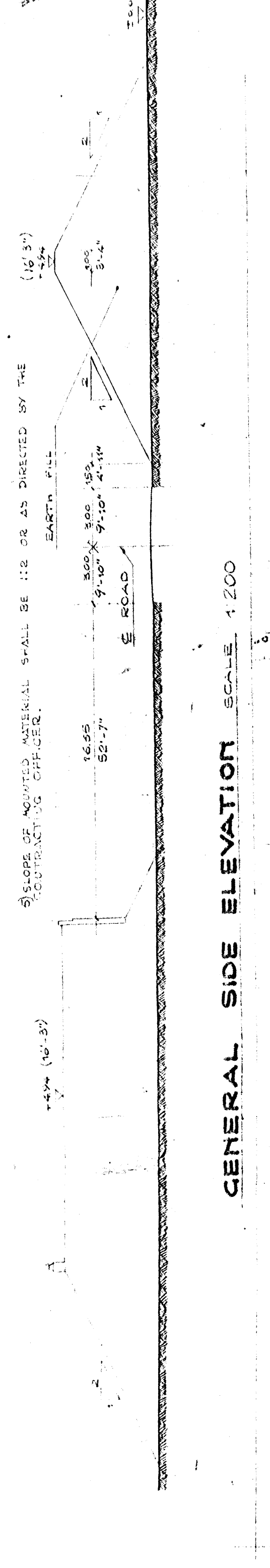


TRANSVERSE SECTION SCALE 1:100

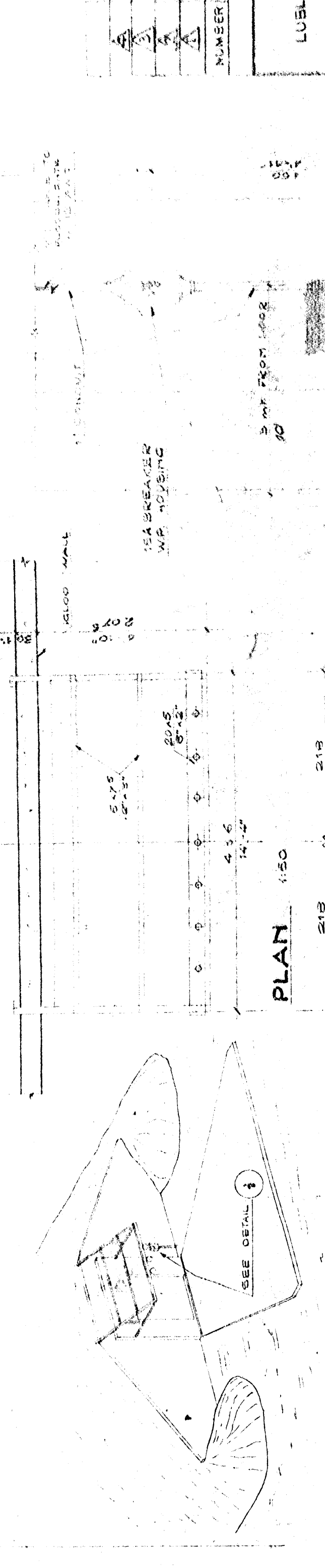


SOIL BEARING VALUE = 1 KG/CM²
 CONCRETE CLASS A, CEMENT TYPE 500.
 TYPE AQ 60 STEEL : 3100 KG/CM² (MIN. YIELD POINT).

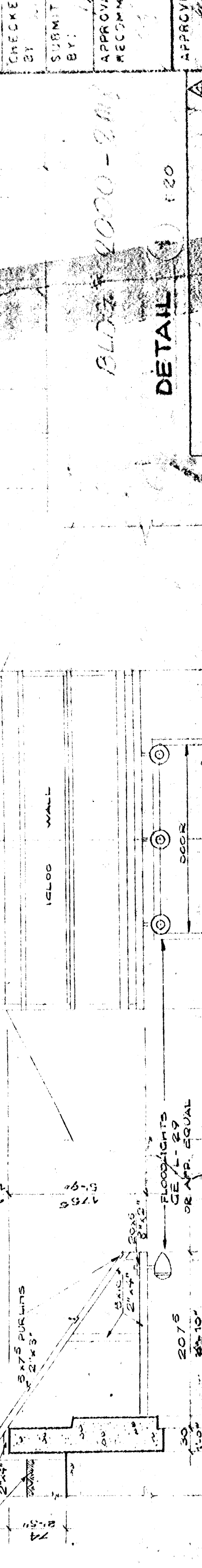
GENERAL SIDE ELEVATION SCALE 1:200



ISOMETRIC VIEW



FRONT ELEVATION SCALE 1:50



DETAIL SCALE 1:20



AS BUILT

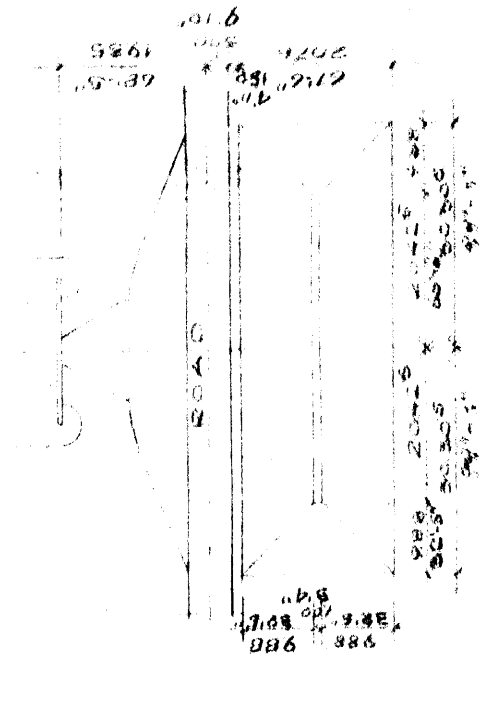
STATION NUMBER 33-34(CASE) 01
 SHEET NO. 1 A 5
 DATE 28 MAR 57

JOINT CONSTRUCTION AGENCY
 US EUROPEAN COMMAND
 SOUTHERN DISTRICT
 ADANA TURKEY
 AMMO STORAGE AREA ADDITION
 AMMO IGLCO
 PLAN, SECTIONS & ELECTRIC.

REVISIONS

NUMBER	DESCRIPTION	DATE	APPROVAL
1	CHANGED SHEET NO. 11/4/57	11/4/57	
2	CHANGED OUTSIDE RAILS AND DOOR DIMENSION	11/4/57	
3	CHANGED SHEET NO. 11/4/57	11/4/57	

GENERAL PLAN SCALE 1:100



32

